

MyAssays Desktop Pro R1

Overview

This document contains the release notes for **MyAssays Desktop Pro**, providing the latest information about the specified version, including:

- Download and Installation Instructions
- How to Contact Support/Provide Feedback
- System Requirements
- Sources of Further Information
- Summary of Changes
- Known Issues

Version

R1 v1.0.678.689

Download Links

Installation

<https://myassaysfiles.blob.core.windows.net:443/release/mad/r1/MyAssays-Desktop-Setup-v1.0.678.689.msi>

User's Guide

<https://myassaysfiles.blob.core.windows.net/release/mad/r1/MyAssays-Desktop-Users-Guide-v1.0.678.689.pdf>

Support

For technical support please email support@myassays.com.

Feedback

Please provide any feedback, suggestions or feature requests to support@myassays.com.

June 1st 2017



System Requirements

Supported Operating Systems

- Windows 7 (32-bit and 64-bit)
- Windows 8.x (32-bit and 64-bit)
- Windows 10 (32-bit and 64-bit)

Software Requirements

Microsoft .NET 4 (full) or later must be installed (this is pre-installed on Windows 10 systems). For earlier versions of Windows, if it is not already installed on your system or you are not sure, please visit: <http://www.microsoft.com/en-gb/download/details.aspx?id=17851>.

Notes if Upgrading from a Pre-Release Version

If you have used or installed a pre-release version of the software, please uninstall that version before continuing. Your data and files will remain after uninstall and will be available after installing the newer version.

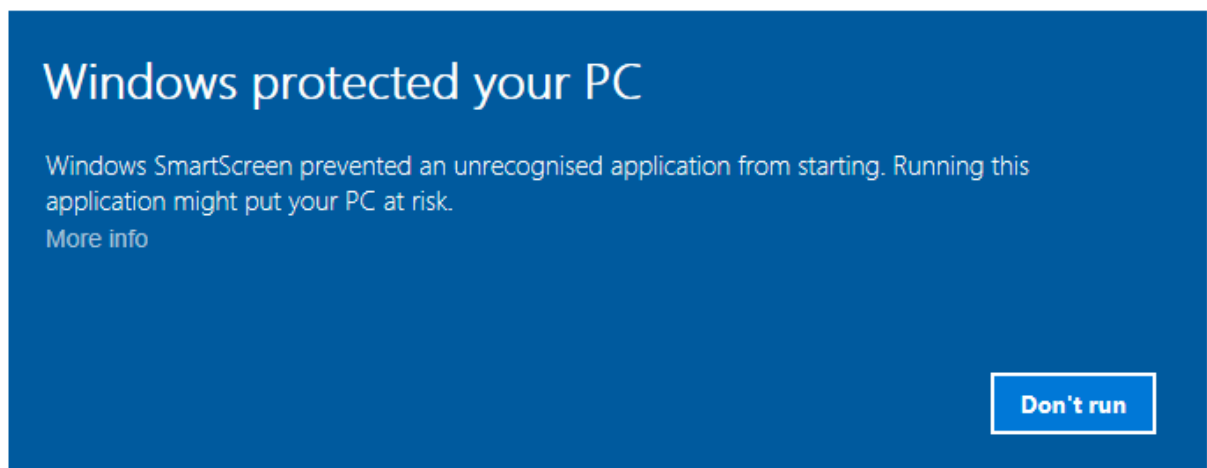
To ensure the pre-configured protocols are updated, it is necessary to delete the MyAssays\Protocols folder (typically under your **Documents** folder). This will ensure that the content is recreated with the updated pre-configured protocols when the application is started.

If you have created your own protocols with a pre-release version that you plan to use after the upgrade it is recommended that you move them to another location before deleting the MyAssays\Protocols folder. (They can be moved back after the updated content has been created).

Installation

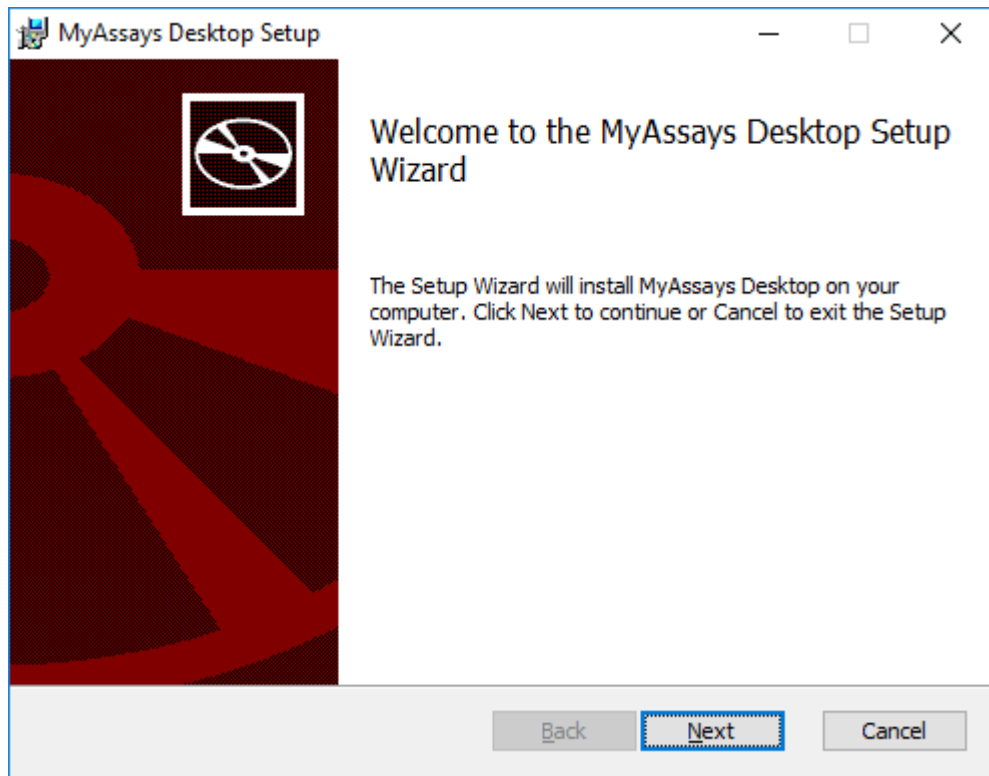
The installation process must be performed using a Windows account with administrator privileges.

1. Download and launch the MSI file. If prompted:



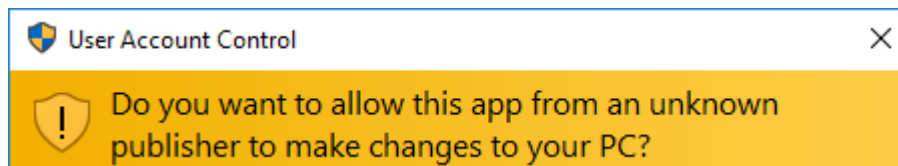
Press **More info** and select **Run anyway**

2. Follow the steps through the wizard:



Providing the requested information.

3. If prompted:

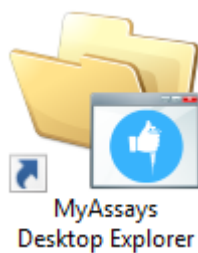


Allow installation by pressing **Yes**.

4. On completion, optionally tick to **Launch MyAssays Explorer** and then press **Finish**.

Launch

After installation, the **MyAssays Explorer** icon will appear on the desktop:



Use this to start the application.

June 1st 2017



Licensing

A license is required to use the application. The first time the application is launched, the **License Activation Wizard** will be launched. Use this wizard to provide your product serial code and email address.

Uninstall

The software installations can be uninstalled using the standard Windows uninstall function (from Control Panel | Uninstall a Program).

Further Information

The following online video resources provide various walkthroughs of the software.

Getting Started

<https://www.myassays.com/myassays-desktop-fundamentals.video>

<https://www.myassays.com/download-and-use-protocols-from-myassays.video>

Importing Data

<https://www.myassays.com/import-measurement-data-from-excel-files-with-myassays-desktop.video>

<https://www.myassays.com/import-measurement-data-from-multiple-excel-files-with-myassays-desktop.video>

ELISA

<https://www.myassays.com/elisa-data-analysis-with-myassays-desktop.video>

<https://www.myassays.com/multiple-plate-elisa-with-myassays-desktop.video>

Worklists

<https://www.myassays.com/myassays-desktop-sample-ids-and-worklists.video>

Export

<https://www.myassays.com/myassays-desktop-custom-export-for-lims.video>

Multiplex

<https://www.myassays.com/myassays-desktop-automatic-launching-of-multiplex-analysis.video>

<https://www.myassays.com/myassays-desktop-introducing-the-multiplex-protocol.video>

Folder Poll

<https://www.myassays.com/folder-poll-with-myassays-desktop.video>

We will be adding more videos in due course.

What's New?

This section describes key enhancements since previous versions:

Changes Since v1.0.641.3

Multiplex Protocol Update

Terminology change Plate Dilution Factor and Sample Dilution Factors.

Multiplex Concentrations Editor Enhancements

Including:

- Specification of different units per analytes
- Matching Units option
- Non-serial or serial concentration values

Import Method Additions

Automatic import of analyte names from supported files.

- Support for Luminex xPonent CSV multiplex
- Support for MSD CSV and TXT multiplex files

Sample Labelling

Easy-to-use sample labelling editor including colour pickers for text highlight and text colour.

Best Fit

Now defaults to 4PL and 5PL fit methods weighted and unweighted.

Best Fit Score Method Options

Presets available for various common scoring methods

Support for Large Text Sizes

With support for large text sizes as commonly used with larger screen resolutions (e.g. 3000x2000 displays)

SheetName option per TransformContent Element

This allows transform content elements to appear on different sheets (e.g. Fit Chart and Best Fit table can now appear on separate sheets)

Export Plug-In Option

Export Wizard includes option to select Export Plug-In Option to use for output.

Infinite Weight

When using a zero standard in the fit, e.g. so the calibrator is (0,0), if using a weight method such as $1/y^2$ then this will result in an infinite weight that can skew the fit. When this occurs a warning message appears.

Also, this can be resolved using advanced XML setting for Standard Curve Fit to replace any infinite weight with the maximum finite weight in the set optionally multiplied by a factor, e.g.

June 1st 2017



`WeightInfinityResolution="MaxFiniteMultipliedByFactor"`
`WeightInfinityReplacementFiniteMaxFactor="2"`

Changes Since v1.0.621.602

Feature Licensing

Multiplex feature now requires a specific license type. If you do not have a multiplex license contact support for an updated license.

Cached Tab Selection

Switching between the main tabs in the Analysis window is now even faster.

Flags View

View flagged items from Flags view option (available after any point or position is flagged)

Units Specification

Currently via XML only

Transform Output Variables

For referring to transform calculations and evaluations in expressions.

Changes Since v1.0.593.182

Layout Editor Update

The Layout Editor has been replaced with a faster implementation that no longer requires Silverlight.

Best Fit Feature

The Standard Curve Fit transform now offers the Best-Fit fit method. When selected, a Scoring Method can be selected to use to sort fit results and pick the best.

Support for Comma Decimal Separator Systems

The application now works with the system's current culture settings. Any numerical values (including data and parameter) should be specified using the systems culture settings. E.g. "1,23" on a typical European configuration is equivalent to "1.23" on a US-based system.

Faster Tab Selection

Switching between the main tabs in the Analysis window is now faster.

Integrated Transform Help

In the configured transforms list a help icon is now available to open the help page associated with the transform.

Known Issues

Out of Memory Error with Multiple Recalculations with Best Fit and Multiplex

When analysing a multiplex assay with a high number of analytes and the “Best Fit” fit method, after several recalculations an Out of Memory error may occur. As a current workaround, avoid repeated recalculations with large data sets like this when using Best Fit. (A fix will be provided shortly.)

Keyboard Occasionally Loses Control Focus When Editing Certain Property Values

To resolve this press Esc key to continue with keyboard entry.

Value Bars do not appear in Sheet View

Currently any configured Value Bars do not appear in Sheet View. They do appear in Page View and in Excel exports.

Best Fit Search is not valid. Fit method could not be detected.

This message will occur if a protocol was created with a version before the Best Fit feature was added (a pre-release version) but is then changed to use the Best Fit method. (This currently includes the pre-installed Multiplex protocol) To resolve this, the easiest solution is to select a different fit method or recreate your protocol with the new installation to use the Best Fit feature.

Alternatively, insert the following XML snippet under the StandardCurveFit element in the XML tab.

```
<?xml version="1.0" encoding="utf-8" ?>
<BestFitSearch xmlns="http://www.myassays.com/bestfitsearch"
WeightCSV="None,1/y2,1/x2,x2,y2" ScoreMethod="R2">
  <Method DisplayName="4PL" FactoryName="4PL"/>
  <Method DisplayName="5PL" FactoryName="5PL"/>
</BestFitSearch>
```