

# MyAssays Desktop Pro R10 Release Notes

Product Version Number: **R10 – 10.0.290.1323 (230317)**

## Overview

This document contains the release notes for **MyAssays Desktop Pro**, providing the latest information about the specified version, including:

- [Download Links](#)
- [Support Contacts](#)
- Installation
  - [System Requirements](#)
  - [Upgrading from an Earlier Version](#)
  - [Installation Process](#)
  - [Launching](#)
  - [Uninstall](#)
- [Video Resources](#)
- [\*\*What's New in this Release?\*\*](#)
- [Known Issues](#)

## Download Links

Download the product installation and documentation from here:

### Installation

<https://myassaysfiles.blob.core.windows.net/release/mad/r10/10.0.290.1323/myassays-desktop-setup-v10.0.290.1323.msi> (160 MB)

## User's Guide

<https://myassaysfiles.blob.core.windows.net/release/mad/r10/10.0.290.1323/myassays-desktop-users-guide-v10.0.290.1323.pdf> (19 MB)

## Support Contacts

For technical support please email [support@myassays.com](mailto:support@myassays.com).

## Feedback

Please send any feedback, suggestions or feature requests to [support@myassays.com](mailto:support@myassays.com).

# Installation

## System Requirements

MyAssays Desktop runs successfully on the minimum system configuration listed below. If your computer does not meet the technical requirements, you may be not able to use MyAssays Desktop.

<b>CPU:</b>	Intel/AMD 2 GHz or faster processor (32-bit or 64-bit)
<b>Memory:</b>	2GB RAM
<b>Available disk space:</b>	300MB
<b>Operating systems:</b>	Windows 11, 10, 8.x, 7
<b>Other software:</b>	Microsoft .NET 4.7.2 or later
<b>Display:</b>	1024 x 768 or higher resolution

## Software Requirements

Microsoft .NET 4.7.2 or later must be installed (this is pre-installed on newer Windows 11,10 systems). For earlier versions of Windows, if it is not already installed on your system or you are not sure, please download and install from:

<http://go.microsoft.com/fwlink/?LinkId=863262>.

More information about the .NET 4.7.2 installation can be found at:

<https://support.microsoft.com/en-gb/help/4054530/microsoft-net-framework-4-7-2-offline-installer-for-windows>.

# Upgrading from an Earlier Version

If an earlier version of MyAssays Desktop is already installed on your system, you can install the new version without uninstalling the earlier version. It is also not necessary to deactivate and reactivate the software license. The installation process will update the information from the previous version.

## Data Files

When upgrading an existing installation, your original data files (as stored under the **Assay Data Folder Root**, e.g., Documents\MyAssays) are preserved, and any new data files (such as new installed protocols) are automatically added.

If you wish to reset all data files to a clean install state, then navigate to your **Assay Data Folder Root** and delete (or backup) all files and subfolders. The next time MyAssays Desktop Explorer is launched, the data files are reset to the clean install state.

## Folder Poll

If you are working with Folder Poll then update your Folder Poll installation to the latest version. You can find the latest Folder Poll version along with release notes [here](#).

To upgrade a Folder Poll installation you will need to first uninstall the existing Folder Poll software. During the uninstall process you will be asked if the user-generated files should be removed:



- Service configuration files
- Application log files

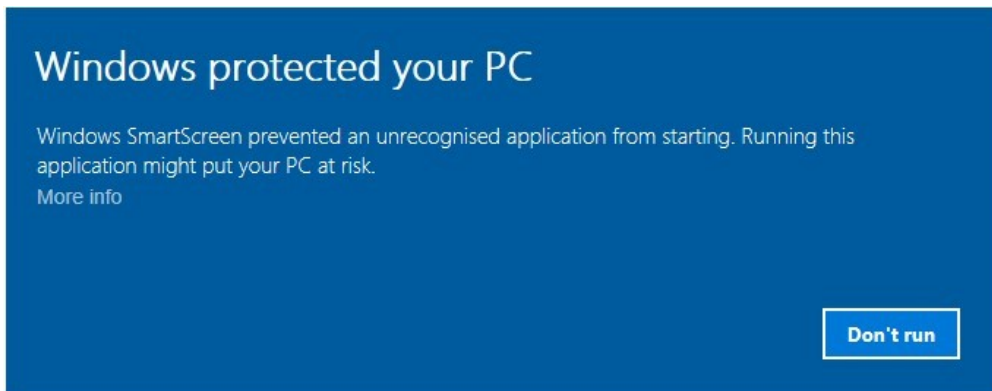
To preserve any existing folder polls select the **Keep Files** option; the existing settings will then be retained for the updated Folder Poll installation.

# Installation



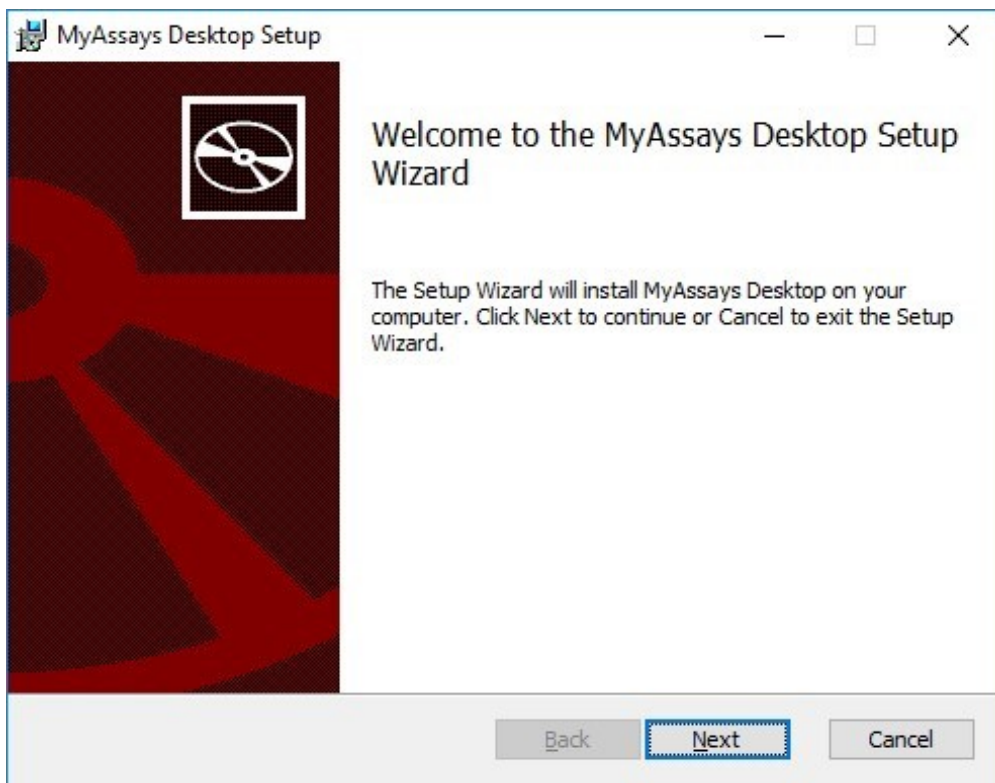
The installation process must be performed using a Windows account with administrator privileges.

1. Download and launch the MSI file. If prompted:



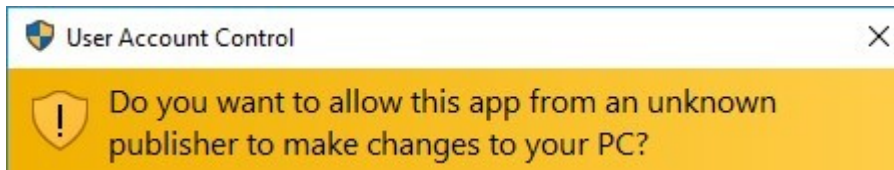
Click **More info** and select **Run anyway**.

2. Follow the steps through the wizard:



Provide the requested information.

3. If you see the User Account Control prompt that says:



Select **Yes**.

4. On completion, optionally select to **Launch MyAssays Desktop Explorer** and then click **Finish**.

## Launch

After installation, the MyAssays Desktop Explorer icon will appear on the desktop:

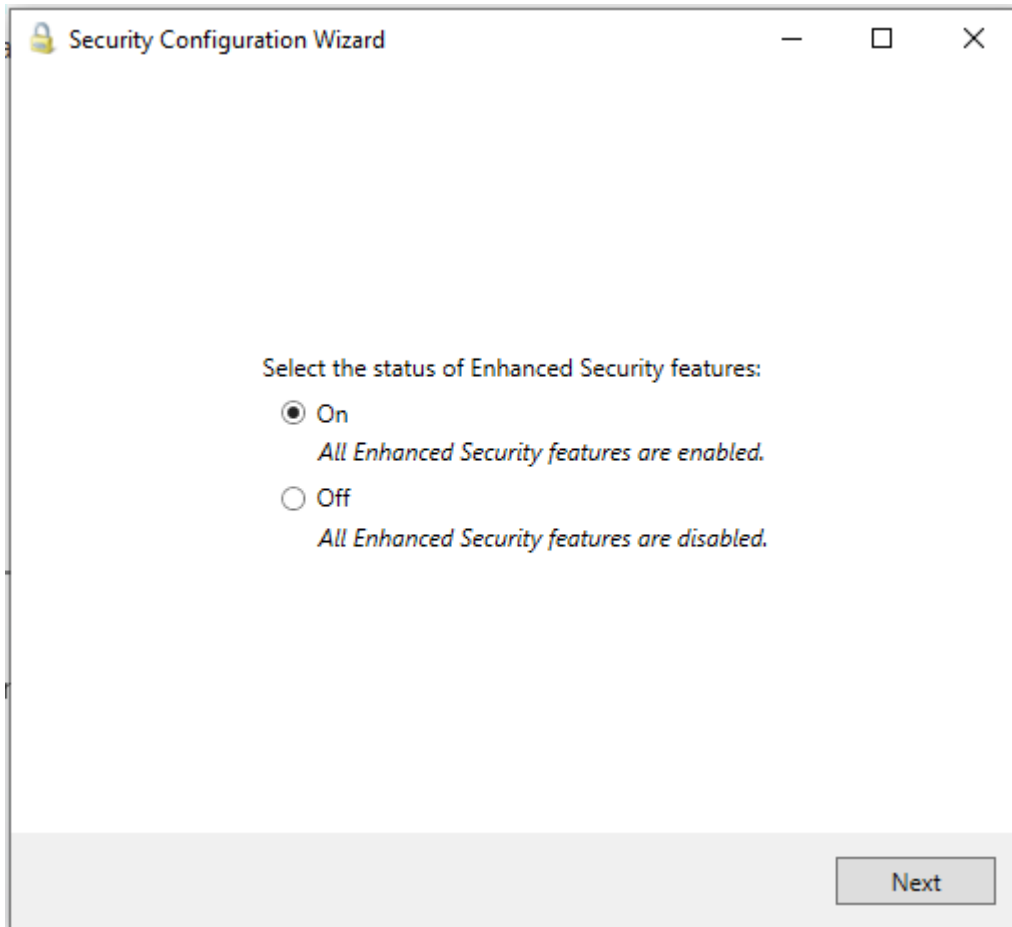


Use this to start the application. Alternatively, you can choose to open MyAssays Desktop from your **Start** menu.

## If working with Enhanced Security:

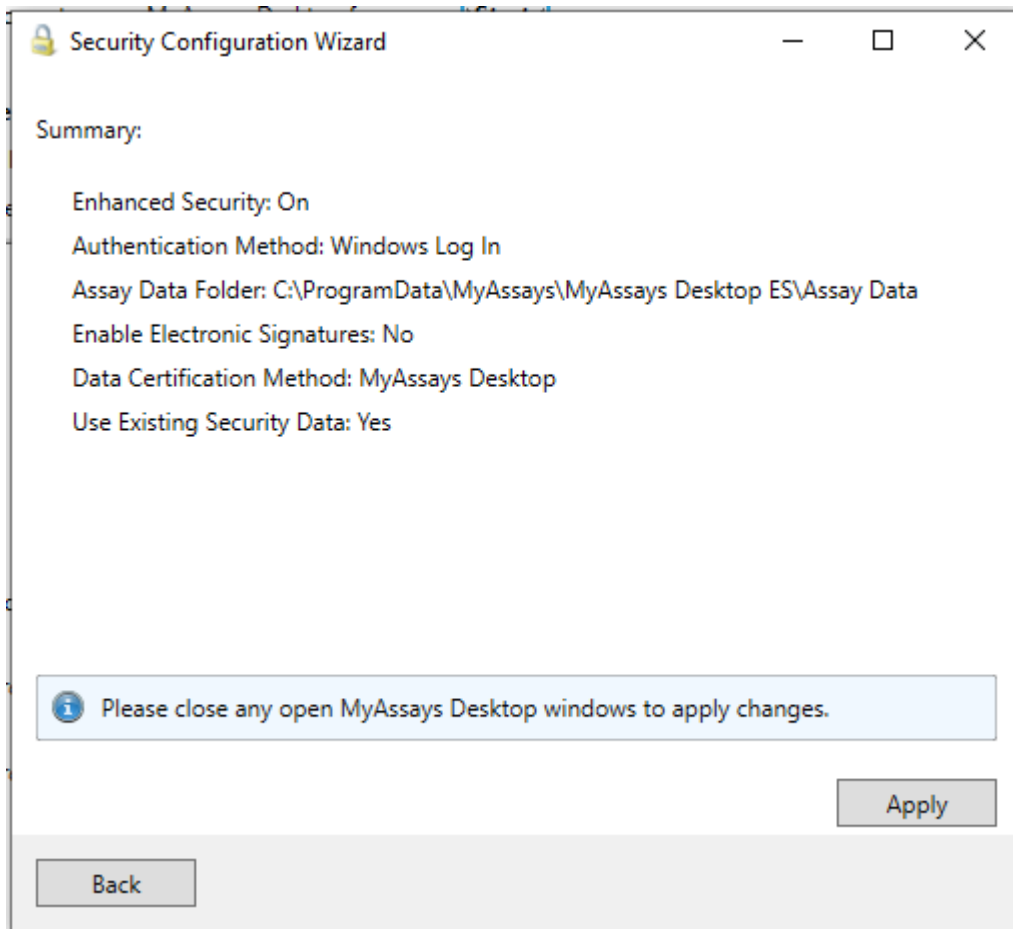
After installing the new version, run the Security Configuration Wizard to apply the new features and enhancements to the configuration.

1. With an Administrator account, launch the **MyAssays Desktop Explorer**
2. Launch the **Security Configuration Wizard** and select to turn on Enhanced Security



3. Continue through all steps of the **Security Configuration Wizard**, pressing **Next** to accept the default configuration.

4. On the last step press **Apply** to apply





# Uninstalling MyAssays Desktop

The software installations can be uninstalled using the standard Windows uninstall function (from **Control Panel | Uninstall a program**).

## Further Information

For the latest video content please visit <https://www.myassays.com/myassays-desktop-training-course.html>

Selected video links are provided here:

### Getting Started

- <https://www.myassays.com/video/myassays-desktop-installation> (3 min 23 sec)
- <https://www.myassays.com/video/licensing-myassays-desktop-with-internet-connectivity> (2 min 17 sec)
- <https://www.myassays.com/video/licensing-myassays-desktop-without-internet-connectivity> (3 min 18 sec)
- [https://www.myassays.com/video/get-started-with-myassays-desktop-\(concepts-and-processes\)](https://www.myassays.com/video/get-started-with-myassays-desktop-(concepts-and-processes)) (9 min 53 sec)
- [https://www.myassays.com/video/get-started-with-myassays-desktop-\(using-the-software\)](https://www.myassays.com/video/get-started-with-myassays-desktop-(using-the-software)) (5 min 24 sec)
- <https://www.myassays.com/video/myassays-desktop-explorer> (4 min 30 sec)
- <https://www.myassays.com/video/download-protocols-for-myassays-desktop> (3 min 47 sec)
- <https://www.myassays.com/video/create-a-protocol-with-myassays-desktop> (11 min 33 sec)
- [https://www.myassays.com/video/introduction-to-assay-validation-\(elisa\)](https://www.myassays.com/video/introduction-to-assay-validation-(elisa)) (12 min 13 sec)
- [https://www.myassays.com/video/introduction-to-assay-validation-\(ria\)](https://www.myassays.com/video/introduction-to-assay-validation-(ria)) (6 min 58 sec)
- <https://www.myassays.com/video/whats-new-in-myassays-desktop-r4> (8 min 7 sec)
- <https://www.myassays.com/video/whats-new-in-myassays-desktop-r5> (6 min 20 sec)
- <https://www.myassays.com/video/whats-new-in-myassays-desktop-r6> (8 min 12 sec)
- <https://www.myassays.com/video/whats-new-in-myassays-desktop-r7> (7 min 8 sec)

sec)

- <https://www.myassays.com/video/upgrading-myassays-desktop-versions> (2 min 23 sec)
- <https://www.myassays.com/video/whats-new-in-myassays-desktop-r8> (6 min 6 sec)
- <https://www.myassays.com/video/whats-new-in-myassays-desktop-r9> (4 min 52 sec)
- <https://www.myassays.com/video/comparing-curve-fit-results-between-myassays-and-other-providers> (8 min 29 sec)

## Essentials

- [https://www.myassays.com/video/get-started-with-myassays-desktop-\(concepts-and-processes\)](https://www.myassays.com/video/get-started-with-myassays-desktop-(concepts-and-processes)) (9 min 53 sec)
- [https://www.myassays.com/video/get-started-with-myassays-desktop-\(using-the-software\)](https://www.myassays.com/video/get-started-with-myassays-desktop-(using-the-software)) (5 min 24 sec)
- <https://www.myassays.com/video/myassays-desktop-plate-layout-editor> (4 min 57 sec)
- <https://www.myassays.com/video/myassays-desktop-rack-layout-editor> (5 min 46 sec)
- <https://www.myassays.com/video/import-data-with-myassays-desktop> (9 min 33 sec)
- <https://www.myassays.com/video/create-a-protocol-with-myassays-desktop> (11 min 33 sec)
- <https://www.myassays.com/video/myassays-desktop-standard-curve-fit-transform> (8 min 45 sec)
- <https://www.myassays.com/video/myassays-desktop-fit-methods> (9 min 16 sec)
- <https://www.myassays.com/video/myassays-desktop-transforms> (7 min 2 sec)
- <https://www.myassays.com/video/best-fit-with-myassays-desktop> (4 min 29 sec)
- [https://www.myassays.com/video/reporting-with-myassays-desktop-\(an-introduction\)](https://www.myassays.com/video/reporting-with-myassays-desktop-(an-introduction)) (2 min 20 sec)
- <https://www.myassays.com/video/data-export-with-myassays-desktop> (5 min 14 sec)

- <https://www.myassays.com/video/elisa-analysis-with-myassays-desktop> (11 min 45 sec)
- <https://www.myassays.com/video/ria-data-analysis-with-myassays-desktop> (6 min 15 sec)
- <https://www.myassays.com/video/qualitative-assays-and-data-qualification-with-myassays-desktop> (3 min 33 sec)
- <https://www.myassays.com/video/myassays-desktop-sample-labels> (5 min 15 sec)
- <https://www.myassays.com/video/configuring-multiple-exports-in-myassays-desktop> (4 min 13 sec)
- <https://www.myassays.com/video/myassays-desktop-expressions> (7 min 29 sec)
- <https://www.myassays.com/video/kinetic-and-spectral-data-analysis-with-myassays-desktop> (4 min 52 sec)
- <https://www.myassays.com/video/myassays-desktop-with-folder-poll> (4 min 33 sec)
- <https://www.myassays.com/video/migrating-from-a-legacy-system-to-myassays-desktop> (12 min 25 sec)
- <https://www.myassays.com/video/collecting-diagnostic-logs-with-myassays-desktop> (1 min 37 sec)

## Basics

- <https://www.myassays.com/video/download-protocols-for-myassays-desktop> (3 min 47 sec)
- <https://www.myassays.com/video/import-data-with-myassays-desktop> (9 min 33 sec)
- <https://www.myassays.com/video/create-a-protocol-with-myassays-desktop> (11 min 33 sec)
- <https://www.myassays.com/video/importing-data-with-an-unbounded-range-in-myassays-desktop> (3 min 1 sec)
- <https://www.myassays.com/video/myassays-desktop-standard-curve-fit-transform> (8 min 45 sec)
- <https://www.myassays.com/video/myassays-desktop-fit-methods> (9 min 16 sec)
- <https://www.myassays.com/video/myassays-desktop-transforms> (7 min 2 sec)

- <https://www.myassays.com/video/myassays-desktop-expressions> (7 min 29 sec)
- <https://www.myassays.com/video/myassays-desktop-sample-labels> (5 min 15 sec)
- <https://www.myassays.com/video/configuring-multiple-exports-in-myassays-desktop> (4 min 13 sec)
- [https://www.myassays.com/video/reporting-with-myassays-desktop-\(an-introduction\)](https://www.myassays.com/video/reporting-with-myassays-desktop-(an-introduction)) (2 min 20 sec)
- <https://www.myassays.com/video/data-export-with-myassays-desktop> (5 min 14 sec)
- <https://www.myassays.com/video/quality-control-with-myassays-desktop> (8 min 22 sec)
- <https://www.myassays.com/video/introducing-myassays-desktop-qc-control-chart> (4 min 21 sec)
- <https://www.myassays.com/video/myassays-desktop-with-folder-poll> (4 min 33 sec)
- <https://www.myassays.com/video/qualitative-assays-and-data-qualification-with-myassays-desktop> (3 min 33 sec)
- <https://www.myassays.com/video/myassays-desktop-dynamic-worklist-import> (6 min 34 sec)
- [https://www.myassays.com/video/introduction-to-assay-validation-\(elisa\)](https://www.myassays.com/video/introduction-to-assay-validation-(elisa)) (12 min 13 sec)
- [https://www.myassays.com/video/introduction-to-assay-validation-\(ria\)](https://www.myassays.com/video/introduction-to-assay-validation-(ria)) (6 min 58 sec)
- <https://www.myassays.com/video/edit-overview-and-resource-references-in-myassays-desktop> (1 min 58 sec)
- <https://www.myassays.com/video/constraining-a-custom-curve-fit-in-myassays-desktop> (2 min 1 sec)
- <https://www.myassays.com/video/adding-qc-evaluations%2c-rules%2c-and-multiple-observations-in-myassays-desktop> (7 min 36 sec)

## Working with Microplate Assays

- <https://www.myassays.com/video/myassays-desktop-plate-layout-editor> (4 min 57 sec)
- [https://www.myassays.com/video/myassays-desktop-plate-layout-editor-\(for-](https://www.myassays.com/video/myassays-desktop-plate-layout-editor-(for-)

[multiple-plate-analysis](#)) (7 min 54 sec)

- <https://www.myassays.com/video/elisa-analysis-with-myassays-desktop> (11 min 45 sec)
- <https://www.myassays.com/video/multiple-plate-analysis-with-myassays-desktop> (6 min 25 sec)
- [https://www.myassays.com/video/multiple-plate-analysis-with-myassays-desktop-\(different-standard-concentrations-per-plate\)](https://www.myassays.com/video/multiple-plate-analysis-with-myassays-desktop-(different-standard-concentrations-per-plate)) (3 min 16 sec)
- <https://www.myassays.com/video/myassays-desktop-fit-methods> (9 min 16 sec)
- <https://www.myassays.com/video/troubleshooting-multiple-samples-outside-curve-limits-with-myassays-desktop> (5 min 10 sec)
- <https://www.myassays.com/video/quality-control-with-myassays-desktop> (8 min 22 sec)
- <https://www.myassays.com/video/introducing-myassays-desktop-qc-control-chart> (4 min 21 sec)
- <https://www.myassays.com/video/adding-qc-evaluations%2c-rules%2c-and-multiple-observations-in-myassays-desktop> (7 min 36 sec)

## Working with Multiplex Assays

- <https://www.myassays.com/video/multiplex-data-analysis-with-myassays-desktop> (9 min 25 sec)
- <https://www.myassays.com/video/luminex-xponent-multiplex-data-analysis-with-myassays-desktop> (10 min 12 sec)
- <https://www.myassays.com/video/intelliflex-qualitative-data-analysis-protocol-creation-with-custom-sample-table-in-myassays-desktop> (15 min 46 sec)
- <https://www.myassays.com/video/intelliflex-qualitative-data-analysis-protocol-with-myassays-desktop> (4 min 38 sec)
- <https://www.myassays.com/video/intelliflex-quantitative-data-analysis-protocol-creation-with-myassays-desktop> (9 min 46 sec)
- <https://www.myassays.com/video/intelliflex-quantitative-data-analysis-protocol-with-myassays-desktop> (4 min 44 sec)
- <https://www.myassays.com/video/intelliflex-data-file-export-for-myassays-desktop> (2 min 46 sec)
- <https://www.myassays.com/video/intelliflex-field-data-import-into-myassays->

[desktop](#) (6 min 22 sec)

- <https://www.myassays.com/video/sample-table-custom-columns-for-multiplex-with-myassays-desktop> (5 min 36 sec)
- <https://www.myassays.com/video/multiplex-fit-by-analyte-with-myassays-desktop-pro> (3 min 59 sec)

## Working with RIA

- <https://www.myassays.com/video/migrating-from-a-legacy-system-to-myassays-desktop> (12 min 25 sec)
- <https://www.myassays.com/video/ria-data-analysis-with-myassays-desktop> (6 min 15 sec)
- <https://www.myassays.com/video/myassays-desktop-rack-layout-editor> (5 min 46 sec)
- <https://www.myassays.com/video/myassays-desktop-fit-methods> (9 min 16 sec)
- <https://www.myassays.com/video/wizard2-data-import-with-myassays-desktop> (7 min 41 sec)
- [https://www.myassays.com/video/introduction-to-assay-validation-\(ria\)](https://www.myassays.com/video/introduction-to-assay-validation-(ria)) (6 min 58 sec)
- <https://www.myassays.com/video/quality-control-with-myassays-desktop> (8 min 22 sec)
- <https://www.myassays.com/video/introducing-myassays-desktop-qc-control-chart> (4 min 21 sec)
- [https://www.myassays.com/video/wizard2-integration-with-myassays-desktop-\(1-of-3\)](https://www.myassays.com/video/wizard2-integration-with-myassays-desktop-(1-of-3)) (2 min 48 sec)
- [https://www.myassays.com/video/wizard2-integration-with-myassays-desktop-\(2-of-3\)](https://www.myassays.com/video/wizard2-integration-with-myassays-desktop-(2-of-3)) (7 min 9 sec)
- [https://www.myassays.com/video/wizard2-integration-with-myassays-desktop-\(3-of-3\)](https://www.myassays.com/video/wizard2-integration-with-myassays-desktop-(3-of-3)) (7 min 28 sec)

## Kinetic/Spectral Analysis

- <https://www.myassays.com/video/kinetic-and-spectral-data-analysis-with-myassays-desktop> (4 min 52 sec)
- <https://www.myassays.com/video/myassays-desktop-xy-data-analysis-range> (3 min

36 sec)

- <https://www.myassays.com/video/curve-fitting-to-xy-data-with-myassays-desktop> (4 min 13 sec)
- <https://www.myassays.com/video/myassays-desktop-xy-reduction-peak-transform> (10 min 19 sec)
- <https://www.myassays.com/video/enzyme-kinetics-with-myassays-desktop> (11 min 55 sec)
- <https://www.myassays.com/video/myassays-desktop-xy-reduction-transforms> (17 min 16 sec)
- <https://www.myassays.com/video/myassays-desktop-xy-plot-report-element> (3 min 35 sec)
- <https://www.myassays.com/video/myassays-desktop-xy-replicates-function-transform> (2 min 16 sec)
- <https://www.myassays.com/video/myassays-desktop-xy-reduction-function-transform> (3 min 23 sec)
- <https://www.myassays.com/video/sample-table-custom-columns-for-xy-and-well-scan-data> (4 min 38 sec)

## Scan Well Analysis

- <https://www.myassays.com/video/well-scan-data-analysis-with-myassays-desktop> (7 min 23 sec)
- <https://www.myassays.com/video/myassays-desktop-scan-blank-correction-transform> (2 min 33 sec)

## Configuring Data Calculations

- <https://www.myassays.com/video/myassays-desktop-transforms> (7 min 2 sec)
- <https://www.myassays.com/video/myassays-desktop-matrices> (5 min 35 sec)
- <https://www.myassays.com/video/myassays-desktop-sample-labels> (5 min 15 sec)
- <https://www.myassays.com/video/myassays-desktop-evaluations> (10 min 43 sec)
- <https://www.myassays.com/video/validation-with-myassays-desktop> (6 min 40 sec)
- <https://www.myassays.com/video/myassays-desktop-expressions> (7 min 29 sec)
- <https://www.myassays.com/video/myassays-desktop-expression-transforms> (9 min



29 sec)

- <https://www.myassays.com/video/myassays-desktop-sample-label-expressions> (6 min 48 sec)
- <https://www.myassays.com/video/using-isflagged-in-myassays-desktop-pro-sample-labels> (6 min 23 sec)
- <https://www.myassays.com/video/myassays-desktop-validation-expressions> (7 min 11 sec)
- <https://www.myassays.com/video/myassays-desktop-evaluation-expressions> (7 min 51 sec)
- <https://www.myassays.com/video/myassays-desktop-reference-curve-overlay> (5 min 11 sec)
- <https://www.myassays.com/video/myassays-desktop-custom-fit> (2 min 55 sec)
- <https://www.myassays.com/video/troubleshooting-multiple-samples-outside-curve-limits-with-myassays-desktop> (5 min 10 sec)
- <https://www.myassays.com/video/quality-control-with-myassays-desktop> (8 min 22 sec)
- <https://www.myassays.com/video/myassays-desktop-scatter-plot-xy-report-element> (5 min 53 sec)
- <https://www.myassays.com/video/myassays-desktop-multiple-standard-curve-fits-on-a-single-plate> (14 min 37 sec)
- <https://www.myassays.com/video/adding-conditional-transforms-with-myassays-desktop> (3 min 47 sec)
- <https://www.myassays.com/video/adding-ec-and-ic-values-with-myassays-desktop> (4 min 57 sec)
- <https://www.myassays.com/video/adding-ec-and-ic-values-with-myassays-desktop-r7> (4 min 37 sec)
- <https://www.myassays.com/video/add-evaluations-to-dose-response-curves-in-myassays-desktop> (4 min 40 sec)
- <https://www.myassays.com/video/reference-limits-of-quantification-in-myassays-desktop> (5 min 12 sec)
- <https://www.myassays.com/video/myassays-desktop-posvaluebyindex-function> (3 min 57 sec)

- <https://www.myassays.com/video/macros-in-myassays-desktop> (4 min 51 sec)
- <https://www.myassays.com/video/myassays-desktop-quick-protocol-editor> (3 min 13 sec)
- <https://www.myassays.com/video/constraining-a-custom-curve-fit-in-myassays-desktop> (2 min 1 sec)

## Reporting

- [https://www.myassays.com/video/reporting-with-myassays-desktop-\(an-introduction\)](https://www.myassays.com/video/reporting-with-myassays-desktop-(an-introduction)) (2 min 20 sec)
- <https://www.myassays.com/video/myassays-desktop-report-elements> (4 min 55 sec)
- <https://www.myassays.com/video/sheet-reports-with-myassays-desktop> (6 min 38 sec)
- <https://www.myassays.com/video/page-reports-with-myassays-desktop> (7 min 24 sec)
- <https://www.myassays.com/video/sample-table-ordering-with-myassays-desktop> (4 min 42 sec)
- <https://www.myassays.com/video/myassays-desktop-sample-labels> (5 min 15 sec)
- <https://www.myassays.com/video/myassays-desktop-matrix-references-in-sample-labels> (4 min 28 sec)
- <https://www.myassays.com/video/sample-labels-column-with-myassays-desktop> (5 min 2 sec)
- <https://www.myassays.com/video/ordering-field-data-with-myassays-desktop> (4 min 12 sec)
- <https://www.myassays.com/video/myassays-desktop-reference-curve-overlay> (5 min 11 sec)
- <https://www.myassays.com/video/chart-appearance-editor-in-myassays-desktop> (3 min 59 sec)
- <https://www.myassays.com/video/myassays-desktop-results-naming-with-metadata> (5 min 11 sec)
- <https://www.myassays.com/video/myassays-desktop-scatter-plot-xy-report-element> (5 min 53 sec)
- <https://www.myassays.com/video/myassays-desktop-curve-overlay> (6 min 27 sec)

- <https://www.myassays.com/video/myassays-desktop-xy-plot-report-element> (3 min 35 sec)
- <https://www.myassays.com/video/editing-multiple-matrices-and-report-elements-with-myassays-desktop> (3 min 21 sec)
- <https://www.myassays.com/video/myassays-desktop-report-scaling-and-sheet-ordering> (3 min 37 sec)
- <https://www.myassays.com/video/sample-table-custom-columns-with-myassays-desktop-overview> (5 min 46 sec)
- <https://www.myassays.com/video/sample-table-custom-columns-for-multiplex-with-myassays-desktop> (5 min 36 sec)
- <https://www.myassays.com/video/sample-table-custom-columns-for-xy-and-well-scan-data> (4 min 38 sec)

## Transforms

- <https://www.myassays.com/video/myassays-desktop-standard-curve-fit-transform> (8 min 45 sec)
- <https://www.myassays.com/video/myassays-desktop-general-curve-fit-transform> (7 min 2 sec)
- <https://www.myassays.com/video/dose-response-curve-analysis-with-myassays-desktop> (6 min 3 sec)
- <https://www.myassays.com/video/dose-response-curve-parameters-with-myassays-desktop> (2 min 19 sec)
- <https://www.myassays.com/video/updates-to-dose-response-curves-in-myassays-desktop> (6 min 25 sec)
- <https://www.myassays.com/video/curve-fitting-to-xy-data-with-myassays-desktop> (4 min 13 sec)
- <https://www.myassays.com/video/myassays-desktop-xy-reduction-peak-transform> (10 min 19 sec)
- <https://www.myassays.com/video/myassays-desktop-expression-transforms> (9 min 29 sec)
- <https://www.myassays.com/video/myassays-desktop-xy-reduction-transforms> (17 min 16 sec)
- <https://www.myassays.com/video/adding-conditional-transforms-with-myassays->

[desktop](#) (3 min 47 sec)

- <https://www.myassays.com/video/myassays-desktop-dose-by-position> (3 min 14 sec)
- <https://www.myassays.com/video/myassays-desktop-import-to-expression-by-sample-group> (5 min 57 sec)
- <https://www.myassays.com/video/add-evaluations-to-dose-response-curves-in-myassays-desktop> (4 min 40 sec)
- <https://www.myassays.com/video/myassays-desktop-xy-reduction-function-transform> (3 min 23 sec)
- <https://www.myassays.com/video/well-scan-data-analysis-with-myassays-desktop> (7 min 23 sec)

## Automating Data Analysis

- <https://www.myassays.com/video/myassays-desktop-with-folder-poll> (4 min 33 sec)
- <https://www.myassays.com/video/myassays-desktop-analysis-launcher> (5 min 12 sec)
- <https://www.myassays.com/video/myassays-desktop-analysis-launcher-with-tweak-files> (3 min 11 sec)
- <https://www.myassays.com/video/kaleido-3-0-data-analysis-automation-with-myassays-desktop> (4 min 43 sec)
- <https://www.myassays.com/video/folder-poll-impersonation-wizard> (4 min 24 sec)

## Protocols

- <https://www.myassays.com/video/download-protocols-for-myassays-desktop> (3 min 47 sec)
- <https://www.myassays.com/video/create-a-protocol-with-myassays-desktop> (11 min 33 sec)
- <https://www.myassays.com/video/dose-response-curve-analysis-with-myassays-desktop> (6 min 3 sec)
- <https://www.myassays.com/video/dose-response-curve-parameters-with-myassays-desktop> (2 min 19 sec)
- <https://www.myassays.com/video/liquid-handling-quality-control-with-myassays->

[desktop](#) (1 min 52 sec)

- <https://www.myassays.com/video/introduction-to-parallel-line-analysis-with-myassays-desktop> (4 min 33 sec)

## Parallel Line Analysis

- <https://www.myassays.com/video/introduction-to-parallel-line-analysis-with-myassays-desktop> (4 min 33 sec)
- <https://www.myassays.com/video/create-a-parallel-line-analysis-protocol-with-myassays-desktop> (9 min 42 sec)
- <https://www.myassays.com/video/multiple-plate-parallel-line-analysis-with-myassays-desktop> (7 min 36 sec)
- <https://www.myassays.com/video/myassays-desktop-parallel-line-analysis-acceptance-criteria> (14 min 11 sec)
- <https://www.myassays.com/video/adding-a-one-way-anova-table-in-myassays-desktop> (4 min 22 sec)

## Data

- <https://www.myassays.com/video/import-data-with-myassays-desktop> (9 min 33 sec)
- <https://www.myassays.com/video/myassays-desktop-transforms> (7 min 2 sec)
- <https://www.myassays.com/video/myassays-desktop-matrices> (5 min 35 sec)
- <https://www.myassays.com/video/myassays-desktop-meta-data> (5 min 46 sec)
- <https://www.myassays.com/video/myassays-desktop-field-data> (6 min 21 sec)
- <https://www.myassays.com/video/data-flagging-with-myassays-desktop> (7 min 50 sec)
- <https://www.myassays.com/video/myassays-desktop-sample-labels> (5 min 15 sec)
- <https://www.myassays.com/video/sample-table-ordering-with-myassays-desktop> (4 min 42 sec)
- <https://www.myassays.com/video/custom-flag-labels-in-myassays-desktop> (4 min 10 sec)
- <https://www.myassays.com/video/myassays-desktop-matrix-references-in-sample-labels> (4 min 28 sec)

- <https://www.myassays.com/video/ordering-field-data-with-myassays-desktop> (4 min 12 sec)
- <https://www.myassays.com/video/multiplex-data-analysis-with-myassays-desktop> (9 min 25 sec)
- <https://www.myassays.com/video/data-export-with-myassays-desktop> (5 min 14 sec)
- <https://www.myassays.com/video/myassays-desktop-results-naming-with-meta-data> (5 min 11 sec)
- <https://www.myassays.com/video/myassays-desktop-numerical-field-data> (8 min 46 sec)
- <https://www.myassays.com/video/myassays-desktop-advice-feature> (8 min 29 sec)
- <https://www.myassays.com/video/constraining-curve-fits-with-myassays-desktop> (6 min 53 sec)
- <https://www.myassays.com/video/myassays-desktop-qc-observation-references-in-advice-conditions> (2 min 20 sec)
- <https://www.myassays.com/video/import-multiple-columns-from-a-csv-file-in-myassays-desktop> (4 min 32 sec)
- <https://www.myassays.com/video/myassays-desktop-scripting-feature> (3 min 49 sec)
- <https://www.myassays.com/video/myassays-desktop-custom-expression-function> (3 min 54 sec)
- <https://www.myassays.com/video/myassays-desktop-import-to-expression-by-sample-group> (5 min 57 sec)
- <https://www.myassays.com/video/myassays-desktop-expression-by-sample-replicates> (1 min 43 sec)
- <https://www.myassays.com/video/well-scan-data-analysis-with-myassays-desktop> (7 min 23 sec)
- <https://www.myassays.com/video/myassays-desktop-scan-blank-correction-transform> (2 min 33 sec)
- <https://www.myassays.com/video/statistical-functions-in-myassays-desktop-confidence-intervals> (3 min 33 sec)
- <https://www.myassays.com/video/myassays-desktop-certificate-validator-tool> (3

min 41 sec)

- <https://www.myassays.com/video/macros-in-myassays-desktop> (4 min 51 sec)

## Enhanced Security

- <https://www.myassays.com/video/myassays-desktop-enhanced-security-introduction> (8 min 45 sec)
- <https://www.myassays.com/video/myassays-desktop-enhanced-security-myassays-login-authentication> (6 min 57 sec)
- <https://www.myassays.com/video/myassays-desktop-enhanced-security-configuration> (7 min 50 sec)
- <https://www.myassays.com/video/securing-data-import-with-import-requires-no-modification> (4 min 1 sec)
- <https://www.myassays.com/video/securing-data-import-with-an-approved-data-folder> (3 min 51 sec)
- <https://www.myassays.com/video/myassays-desktop-enhanced-security-audit-trail> (4 min 21 sec)
- <https://www.myassays.com/video/securing-data-import-with-data-certification> (4 min 34 sec)
- [https://www.myassays.com/video/myassays-desktop-enhanced-security-configuration-for-wizard2-pc-\(1-of-4\)](https://www.myassays.com/video/myassays-desktop-enhanced-security-configuration-for-wizard2-pc-(1-of-4)) (11 min 15 sec)
- [https://www.myassays.com/video/myassays-desktop-enhanced-security-configuration-for-wizard2-pc-\(2-of-4\)](https://www.myassays.com/video/myassays-desktop-enhanced-security-configuration-for-wizard2-pc-(2-of-4)) (13 min 23 sec)
- [https://www.myassays.com/video/myassays-desktop-enhanced-security-configuration-for-wizard2-pc-\(3-of-4\)](https://www.myassays.com/video/myassays-desktop-enhanced-security-configuration-for-wizard2-pc-(3-of-4)) (9 min 53 sec)
- [https://www.myassays.com/video/myassays-desktop-enhanced-security-configuration-for-wizard2-pc-\(4-of-4\)](https://www.myassays.com/video/myassays-desktop-enhanced-security-configuration-for-wizard2-pc-(4-of-4)) (5 min 58 sec)
- <https://www.myassays.com/video/myassays-desktop-pro-enhanced-security-with-envision> (7 min 57 sec)
- <https://www.myassays.com/video/introduction-to-adding-data-certification-to-enspire> (3 min 40 sec)
- <https://www.myassays.com/video/configuring-and-using-enspire-with-myassays-desktop-pro-enhanced-security> (16 min 8 sec)
- <https://www.myassays.com/video/myassays-desktop-certificate-validator-tool> (3

min 41 sec)

- <https://www.myassays.com/video/export-certification-in-myassays-desktop-enhanced-security> (4 min 8 sec)

## Working with EnSight/Kaleido 3.0

- <https://www.myassays.com/video/introduction-to-kaleido-3-0-and-myassays-desktop> (1 min 48 sec)
- <https://www.myassays.com/video/kaleido-3-0-data-export-and-import-into-myassays-desktop> (3 min 37 sec)
- <https://www.myassays.com/video/create-a-new-protocol-with-kaleido-3-0-xml-data-in-myassays-desktop> (6 min 12 sec)
- <https://www.myassays.com/video/kaleido-3-0-data-analysis-automation-with-myassays-desktop> (4 min 43 sec)

## Working with VICTOR Nivo

- <https://www.myassays.com/video/folder-poll-with-myassays-desktop-pro-and-nivo-automatic-export> (6 min 0 sec)
- <https://www.myassays.com/video/data-export-from-nivo-and-import-into-myassays-desktop-enhanced-security> (5 min 10 sec)
- <https://www.myassays.com/video/myassays-desktop-certificate-validator-tool> (3 min 41 sec)
- <https://www.myassays.com/video/configure-myassays-desktop-enhanced-security-for-md5-certification-for-nivo> (2 min 12 sec)
- <https://www.myassays.com/video/import-nivo-4-5-stacker-data-with-myassays-desktop> (6 min 36 sec)

## Working with WIZARD<sup>2</sup>

- [https://www.myassays.com/video/wizard2-integration-with-myassays-desktop-\(1-of-3\)](https://www.myassays.com/video/wizard2-integration-with-myassays-desktop-(1-of-3)) (2 min 48 sec)
- [https://www.myassays.com/video/wizard2-integration-with-myassays-desktop-\(2-of-3\)](https://www.myassays.com/video/wizard2-integration-with-myassays-desktop-(2-of-3)) (7 min 9 sec)
- [https://www.myassays.com/video/wizard2-integration-with-myassays-desktop-\(3-of-3\)](https://www.myassays.com/video/wizard2-integration-with-myassays-desktop-(3-of-3)) (7 min 28 sec)



- <https://www.myassays.com/video/wizard2-data-import-with-myassays-desktop> (7 min 41 sec)
- <https://www.myassays.com/video/wizard2-isholderdetected-data-import-with-myassays-desktop> (3 min 12 sec)
- <https://www.myassays.com/video/ria-data-analysis-with-myassays-desktop> (6 min 15 sec)
- [https://www.myassays.com/video/myassays-desktop-enhanced-security-configuration-for-wizard2-pc-\(1-of-4\)](https://www.myassays.com/video/myassays-desktop-enhanced-security-configuration-for-wizard2-pc-(1-of-4)) (11 min 15 sec)
- [https://www.myassays.com/video/myassays-desktop-enhanced-security-configuration-for-wizard2-pc-\(2-of-4\)](https://www.myassays.com/video/myassays-desktop-enhanced-security-configuration-for-wizard2-pc-(2-of-4)) (13 min 23 sec)
- [https://www.myassays.com/video/myassays-desktop-enhanced-security-configuration-for-wizard2-pc-\(3-of-4\)](https://www.myassays.com/video/myassays-desktop-enhanced-security-configuration-for-wizard2-pc-(3-of-4)) (9 min 53 sec)
- [https://www.myassays.com/video/myassays-desktop-enhanced-security-configuration-for-wizard2-pc-\(4-of-4\)](https://www.myassays.com/video/myassays-desktop-enhanced-security-configuration-for-wizard2-pc-(4-of-4)) (5 min 58 sec)
- <https://www.myassays.com/video/importing-data-with-an-unbounded-range-in-myassays-desktop> (3 min 1 sec)

## IQ/OQ with MyAssays Desktop QT

- <https://www.myassays.com/video/myassays-desktop-qualification-testing-tool> (2 min 36 sec)
- <https://www.myassays.com/video/myassays-desktop-qualification-testing-tool-setup-and-use> (8 min 5 sec)

## Integrating with LIMS

- <https://www.myassays.com/video/import-sample-ids-from-lims-in-myassays-desktop> (2 min 57 sec)
- <https://www.myassays.com/video/export-results-to-lims-with-myassays-desktop> (5 min 0 sec)
- <https://www.myassays.com/video/sheet-tables-export-plugin-in-myassays-desktop> (4 min 0 sec)

# What's New?

## Updates in MyAssays Desktop Pro R10 (detailing changes since R9.2)



### Multiple Container Selection

Optionally select a subset of plates from multiple plate assays, or exclude analytes from analysis in Multiplex assays. [Video Walkthrough...](#)

### Data Analysis

- New Protocol button added to MyAssays Desktop Explorer - A **New** button appears in the MyAssays Desktop Explorer allowing users to launch the New Protocol Wizard.
- PreCalculate Scripting capabilities now include Quality Control feature - Scripting of QC features in PreCalculate event scripts opens up new capabilities for QC customization, such as on the fly determination of script parameters, such as which files to process.
- Save Export Configuration option - Export configurations can now be saved so that they can be performed when required (now optionally without being performed on every calculation).
- New flagged functions - IfGroupFlagged function added to return a specified value if all replicates of the group are flagged. IsPositionFlagged function added to return a value of 1 if the position is flagged, and a value of 0 if the position is not flagged. [Video Walkthrough...](#)
- Refinements to evaluation of Dose Response Calculation - Refinements have been added to evaluation of Dose Response Calculation to ensure consistency when working with multiple plates.
- Fit Parameter Confidence Interval - Specify custom confidence intervals for

calculated fit parameters. [Video Walkthrough...](#)

- Support for Curly Braces when referring to macros in QC configurations - Macros can be specified in QC configurations using curly braces.
- Calculation Log Updates - Hierarchical Calculation and Error Log in MyAssays Analysis.
- Scan Flag Updates - Flag samples using expressions containing x, y, and z. [Video Walkthrough...](#)
- Flag Cascade Setting - Allows results to be calculated for samples in cases where the analysis of the transform does not depend on a not-flagged input value. [Video Walkthrough...](#)
- Auto Commands Feature - Automate operations to be performed when a protocol file is launched and measurement data file imported. This feature is particularly useful for integration with third party software. [Video Walkthrough...](#)
- Control Chart Target Edit Box - For QC configurations with Control Chart output, the Target value can now be set without using the XML tab.
- Update for XY Reduction Maximum Slope transform - if the expression for XForExtrapolation cannot be evaluated, the result of the calculation is flagged.
- Quick Access Toolbar Customization is now disabled by default. This can be re-enabled by setting the registry key:  
For 64-bit:  
HKEY\_LOCAL\_MACHINE\SOFTWARE\WOW6432Node\MyAssays\MyAssays  
Desktop@EnableQATCustomization (DWORD) 1  
For 32-bit:  
HKEY\_LOCAL\_MACHINE\SOFTWARE\MyAssays\MyAssays  
Desktop@EnableQATCustomization (DWORD) 1

## Data Import

- Data matrix name appears with data import - When importing measurement data files, the name of the data matrix appears in the New Protocol Wizard or Import Wizard, and the Measurements tab. Additionally, toggle buttons have been added to the user interface for switching to column view and showing position colouring.
- New Protocol Racks option hidden for multiple file import - Because rack-based assays contain all measurement data in a single file (whereas multiple plate assays

may contain measurement data in multiple files), the Racks option no longer appears in the New Protocol Wizard when creating a protocol for multiple measurement data files, or a protocol for multiplex.

- Improvements to Parse Cells Import Customization - Improvements to Parse Cells Import provide better support for using tab and return codes to skip to the start of import. Special characters are now displayed in source preview and edit boxes.
- Parse Cells Import for Parameter Entry Single Values - Import a single value for use in analysis from a text file using Parse Cells functionality.
- IIV Checks - If a file to import contains an internal validation method (such as Luminex CSV files which contain CRC checksum that can be used to verify integrity), then MyAssays Desktop can verify this on import and advise if this check is satisfied or not. MyAssays Desktop will still be able to import invalid files. To block the import of files, enable Enhanced Security and set appropriate authorization to block invalid imports.
- Protocol data type flexibility - For protocols that contain measurement data and field data, it is now possible to use such protocols to import data from files that do not contain any field data (previously this function was blocked). The inverse scenario is also now possible, i.e. protocols that do not contain field data can now be used to import files that contain both measurement and field data (however the field data will not be imported).
- Layout Recommendation - If all samples are either unmeasured or marked as unused on the layout, MyAssays Desktop will recommend to create a new layout. A hyperlink appears which automatically populates the layout with a default layout made of Unknown samples where there are collected measurements.
- Added support for MSD text import with single spot (Small-Spot) single analyte data files.
- Added support for overriding system decimal separator for Luminex xPONENT CSV import.

## Enhanced Security

- Added support for enabling Enhanced Security with a standard user domain account and then through elevated UAC prompt using a domain administrator or local machine administrator account. On completion of the Enhanced Security Setup Wizard, MyAssays Desktop Explorer will restart under a standard user domain

account.

- Editable primary system administrator that defaults to the current Windows session user (with Validate/Check Name button if that is changed).
- Optional secondary system-administrator account can be configured from Enhanced Security Setup Wizard
- Improved messaging for "Failed to move assay files to a new folder" message. This message now reads: "It was not possible to create assay data folders and files at {Path}. Please ensure that the necessary write permissions are granted on this folder for the current user account and try again."
- Archive Log feature - Create a secured backup of the Audit Trail and Login Log using the Archive Log Feature. [Video Walkthrough...](#)
- IIV Checks with Enhanced Security - If the file to import contains an internal validation method (such as Luminex CSV files which contain CRC checksum that can be used to verify integrity), then MyAssays Desktop can verify this on import. If the **Validate Internal Import Integrity** authorization is set for the current user, the import will be blocked if the internal validation method fails (such as missing or invalid CRC checksum). Note, if upgrading from a previous installation of MyAssays Desktop (such as R9.2 or earlier) with an existing Enhanced Security configuration, then after installing to apply new authorizations, launch the Enhanced Security **Security Configuration Wizard** and continue through the steps accepting defaults, including **Use existing security data**. On the final step, press **Apply** – this will add the new authorization **Validate Internal Import Integrity** to the configuration. If this step is not followed, this new feature will not be available to existing Enhanced Security configurations.
- Restore configuration backup - New steps included in the Security Configuration Wizard allow users to restore from a configuration backup file.

## Reporting

- Report Element Titles - Report element titles are now displayed on the Report tree.
- Evaluations in Page Templates - Evaluations can now be used in Report Templates to report the value of specified evaluations.
- Sample Data Processing Filter Negate option - This option inverses the result of defined filters. Only rows that do not match all of the specified filters will be

included. This negation applies to filter result by row after all defined filters are evaluated.

- Merge Distinct Sample Table Replicate setting - For field matrices, this new option merges all distinct replicate values and reports these as a CSV. For example, if there are replicates with values displayed as below, with the "Merge Distinct" option selected the result will be displayed as follows:

True,True = True

False,False = False

True,False = True,False

False,True = False,True

True,True,True = True

False,True,False = False,True

True,False,False = True,False

- SheetName support for QC Observations - Each QC Observation can be targeted to a specific output sheet.
- Sample Table Include Header option - Optionally include Sample Table header.
- Chart y-axis numerical formatting update - The method for how the chart y-axis minimum and maximum values are determined has been updated so that axis numerical labels are displayed without using unnecessary precision.
- Report Element type information - When selecting a report element on the **Report** tab, the selected type information is now displayed at the top of the **Properties | Report** tab.
- Multiplex Assay Sheet Name Simplification - For report elements added with ContainerInclusion set to All, the sheet name defaults to {AnalyteName}. For report elements added with ContainerInclusion set to First or Last, the sheet name defaults to {Information}.
- Automatic removal of unused report template references - Automatic removal of unused report template references for notes report elements, as well as unused page template report element references.

## Scripting

- ImportMeasurements script matrix names - Added support for ImportMeasurements script to set matrix names.
- Detect and report corrupted or missing script DLL dependencies - Missing or corrupted DLL dependencies in added scripts are now identified and reported.
- Custom Event Current Results Access - The report.xml can be accessed from the currently selected version number from a Custom event script.

## Fixes in MyAssays Desktop Pro R10 (detailing changes since R9.2)

**Where a 5PL fit resulted in negative asymmetry factor (m), calculation of X for Y may fail to compute a result when one is valid.**

Fixed.

**Error: "System.Xml.XmlException: There is no Unicode byte order mark. Cannot switch to Unicode."**

Fixed.

**MyAssays Desktop Explorer terminates without warning when Windows Login account's context does not match Enhanced Security configuration.**

Fixed.

## **Quality Control Report Element cannot be selected or edited.**

Fixed.

**Error message displayed when matrix names include leading or trailing spaces when using Sample Data Processing Order or Filter operations unclear.**

Fixed.

**Property Editor error “The protocol contains an invalid configuration: Cannot verify specified configuration in accordance with xsd schema. The required attribute ‘Expression’ is missing. Please review and update XML and Apply changes to continue.” when adding evaluations to curve fitting transforms.**

Fixed.

**Subsequent changes to Enhanced Security configuration could only be made by the original administrator. Error message appeared as: “Failed to apply changes: Unable to backup current security configuration. Please make sure configuration files or folders are not locked and try again.”**

Fixed.



**Sample Data Processing (Filtering and Ordering) did not always work as expected if there were two or more matrices with the same name.**

Fixed.

**If using Sample Data Processing (Filtering and Ordering) with an empty sample table an error occurred.**

Fixed.

**In some cases, the output matrix named displayed in Transforms panel were not updated visually after transforms were removed.**

Fixed.

**Sample tables excluded rows if a sample was flagged on some but not all matrices (for XY data).**

Fixed.

**Dilution Factors transform Factors dropdown box did not update as expected when adding further sample types to the Factored Samples dropdown box.**

Fixed.

**Validations configured using QC observation expressions did not report failed sample positions.**

Fixed.

## **Exception of type**

**'MyAssays.CurveFits.Fits.CurveFitExcption' was thrown in certain cases where X Axis type is log.**

Fixed.

**Using a Nivo GxP license, if a measurement data does not match expected format (e.g. protocol is a single matrix but data to import is dual matrix), the incorrect error message was displayed:**

**"Measurement import operation failed: Your product is licensed for Nivo GxP; this only permits the import of Nivo XLSX files."**

Fixed.

**For multiple plate assays, Sample Table Custom Columns plate selection for Matrix or Qualification columns is not applicable (as each late may have a different layout), therefore plate section options have been removed (the equivalent Analyte section remains for multiplex as that is applicable as all analytes use the same layout).**

Fixed.

**ReportPreRender script is now always executed after calculation and replaces the original version in the containing assay-results file. Previously this was not the case.**

Fixed.

**Default report template for multiplex protocols contained duplicate report elements.**

Fixed.

**Report template for multiplex protocols with certain Include For (ContainerInclusion attribute) options caused report template macros to remain in output report (for analytes where the report element was not included). This fix removes such references from the final report along with any empty Word paragraphs that may remain after the removal. A minor consequence of this is that IDs for MatrixTable report element IDs are changed slightly. This might impact certain existing protocols. To resolve this, please update report template IDs accordingly or recreate report template.**

Fixed.

**Fixes and Refinements added for empty XY matrices and empty positions (e.g. where a kinetic matrix or positions in a kinetic matrix are not read).**

Fixed.

**Well scan matrix plate view in Measurements tab row and column header titles were not sized correctly, especially for smaller plate dimensions.**

Fixed.

**Multiplex page template not applied correctly for assays containing more than 9 analytes.**

Fixed.

**XY plot positions Select All was slow to toggle positions.**

Fixed.

**Audit Trail/Login Log Print Output is cropped.**

Fixed.

**When a subset of containers is specified for analysis the QC configuration showed inconsistencies in reference numbers.**

Fixed.

**Numerical formatting did not use all significant digits of precision when plotting report thumbnail charts.**

Fixed.

**In some configurations converting unmeasured sample positions to unused caused a critical exception.**

Fixed.

**In some configurations loaded event script incorrectly fired on assay-results load (this is expected to occur only on protocol load).**

Fixed.

**Symbols for out of range points in QC chart do not appear in MyAssays Analysis report view, however they do appear in the Excel report.**

Fixed.

**Error when opening selected MAD R6 or earlier files: System.ArgumentNullException: Value cannot be null. Parameter name: key**

Fixed.

**For some configurations, curve fit incorrectly excludes Zero values if x-axis is set to logarithmic.**

Fixed.

**In certain scenarios such as low power mode or high CPU usage, the PropertyEditor Text Editors content disappears.**

Fixed.

**With some configurations, the Expression by Matrix (Dual) transform displayed duplicated matrices from the input matrix dropdown box.**

Fixed.

## **Updates in MyAssays Desktop Pro R9.2 (detailing changes since R9)**

### **Nivo 5 .MAD File Extension Support**

Support has been added for Nivo 5 .MAD data files.

## **Fixes in MyAssays Desktop Pro R9.2 (detailing changes since R9)**

**Expression by Sample Type transform does not perform expected calculations when Sample IDs are specified**

Fixed.

## **Adding and Removing Expression by Sample Type transform causes error**

Fixed.

## **Updates to xPONENT file formats in latest FlexMAP3D caused certain data files to fail to import**

Fixed.

## **Updates in MyAssays Desktop Pro R9 (detailing changes since R8.4)**

### **INTELLIFLEX Support**

Support added for single/dual reporter multiplex data files collected using Luminex INTELLIFLEX. [Video Walkthrough...](#)

### **Quality Control Enhancements**

New enhancements to the Quality Control feature of MyAssays Desktop include the ability to add QC Evaluations and QC Rules. These evaluations allow users to report values of interest within the QC configuration. QC Rules can be used in a similar manner to Validations, reporting a pass or fail designation. Rules can be used to configure commonly used guidelines to ensure your assay remains in control, such as Westgard Rules. Additionally, multiple observations from the same run can be included on the same QC report, for example when working with a multiple plate assay with controls on each plate. [Video Walkthrough...](#)

### **Data Analysis**

- Measurements imported with hyperlink - When importing measurement data files, the filename appears as a hyperlink. Clicking this hyperlink opens the file location in

the Windows Explorer. Each time a new measurement data file is imported, the previous import message is replaced with the new data file hyperlink.

- Non-Measurements imported hyperlink - A message reporting the successful import of non-measurement files (such as Sample IDs) appears with a hyperlink to the file location.
- Dose Response Curve evaluations numerical formatting updates - A new option **All Significant Digits of Precision** has been added for Dose Response Curve evaluations.
- Multiplex import updates - When importing data using the New Protocol Wizard, if the **Create multiplex assay** checkbox is selected, multiplex import methods are employed to import multiplex data. If the **Create multiplex assay** checkbox is not selected, the import search does not test for multiplex import methods.
- Multiplex Fit Method by Analyte - Specify a fit method and weighting model for each analyte individually. [Video Walkthrough...](#)
- Parse cells import method decimal separator setting - When importing data using the parse cells method, the **Decimal Separator Symbol** setting will allow users to specify how the decimal separator appears in the current data file: period, comma, or current system setting. [Video Walkthrough...](#)
- Export failure notification - For a failed export, the notification with an improved error message appears, and is closed automatically.
- ParamTable description - For custom tab additions provided by the MyAssays Support Team, an optional description can be added.
- Michaelis-Menten starting estimate improvement - Improved starting point estimates for Michaelis-Menten fits provide better fit results.
- IsHolderDetected="false" measurement exclusion - By updating the import.config.xml file WIZARD<sup>2</sup> measurements with IsHolderDetected="false" can be excluded from import. [Video Walkthrough...](#)
- Container Inclusion Property Editor - For protocols with multiple containers (multiple plates or analytes) specify how the report element (such as sample tables) should be displayed on the report.



## Scripting

- Evaluation function helpers - Evaluation function helpers have been added to assist with custom C# script development.
- FunctionContext for custom expression functions in CalculationStarted script events - Function context added to allow custom expression evaluations in C# scripts.
- AppendXml / InsertXml - Ability to append and insert XML snippets in ReportPreRender script events has been added.

## Reporting

- Macros in page report templates - Meta data values and macros configured in the MyAssays Desktop Protocol can be referenced in page-based report templates using the nomenclature {<Macro>}.
- Sample table custom columns report element - Configure a custom sample table including values of interest for specified sample types. This enhancement allows users to specify the column headers, column order, data matrices reported, and configure qualification columns including sample labels without the need to add dummy Expression by Matrix transforms. [Video Walkthrough](#)
- IncludeRowHighlighting curve data table setting - By using the IncludeRowHighlighting XML setting, the red/green row highlighting can be removed from the curve data table.

## File Management

- Save Results As behaviour - The Save options have been simplified and clarified.

## Log Files

- Calculation time in calculation log - Calculation logs now include calculation time (the time from calculations start until completed).
- New CMD argument **/performance-report** - Command argument **/performance-report** allows users to specify custom performance report creation and export location.

- Certificate validator log record - When using the certificate validator tool, a log record detailing the certification method appears.

## Enhanced Security

- Users accessing Security Management tool - Access to the Security Management tool is determined by the level of permissions granted to the user.
- Check Name feature - When using MyAssays Desktop Enhanced Security with Windows Login Authentication, the Check Names button can be used to perform a test as to whether the user account exists on the specified context.

## Fixes in MyAssays Desktop Pro R9 (detailing changes since R8.4)

### Point-to-Point Curve Overlay Displaying Smoothed Fit Line

Fixed: When adding a Curve Overlay for point-to-point curve fits, a smoothed fit line appeared.

### Insert Before Transform Formatting

Fixed: When adding a new transform using the Insert Before option, the formatting associated with existing transforms did not update as expected.

### Layout and Matrix View Report Elements Show Cropped Legend Text

Fixed: Layout and Matrix View report elements showed cropped legend text.

## **Unable to execute script: This type of CollectionView does not support changes to its SourceCollection from a thread different from the Dispatcher thread.**

Fixed: With certain configurations including a PreCalculate event script, the error "Unable to execute script: This type of CollectionView does not support changes to its SourceCollection from a thread different from the Dispatcher thread." would appear.

## **New file Not Detected**

Fixed: In certain configurations Folder Poll did not detect created files.

## **Pasting Folder Does Not Update File View**

Fixed: Creating a new folder in the Protocols folder did not automatically update the Protocols tab in MyAssays Desktop Explorer.

## **New Files Do Not Appear in File View**

Fixed: Adding new protocol files to Protocols folder did not automatically update the Protocols tab in MyAssays Desktop Explorer.

## **Expression by Sample Replicates - Replicates Expression is Not Calculated**

Fixed: With certain configurations the Expression by Sample Replicates transform did not return calculations.

## **Import error: The file's format is not supported or you don't specify a correct format**

Fixed: When importing a data file compatible with multiple import methods the error "The file's format is not supported or you don't specify a correct format" appeared. This error message verbiage has been improved and contains a hyperlink to the Import Wizard to allow the user to specify which import method should be used.

## **WIZARD<sup>2</sup> XML Import Failure**

Fixed: With certain WIZARD<sup>2</sup> XML data files containing scientific notation inside the DeadTimePercent attribute the import failed.

**Calculation Error: There are not enough measurements for the defined sample layout. Please update the sample layout to ensure that sample numbering is contiguous.**

Fixed: Creating a new custom sample type "Unused" caused an error on calculation.

## **Unexpected Sample ID Import**

Fixed.

## **Critical Error Occurs when Flagging Points on Interactive Curve Chart**

Fixed: Flagging a point on the interactive curve chart caused a critical error.

**Error: The specified doses are too close to each other. Please specify different doses for analysis.**

Fixed: The precision for implementing dose response curves has been updated to adjust to input data.

## **Enhanced Security Sign Prompt not Appearing Consistently on Calculate**

Fixed.

## **SheetTables Export with XML Encodings**

Fixed: When exporting using SheetTables, results with < or > symbols were exported using XML encodings (&lt; &gt;).

## **Unable to Produce a Valid Report: Minx cannot be $\leq 0$ with log x axis.**

Fixed: For some configurations using legacy fit methods the calculations could not be completed for x-values  $\leq 0$  with a logarithmic x-axis.

## **Enhanced Security Error: Failed to apply changed: The configuration file has been changed by another program.**

Fixed.

## **Enhanced Security Error: Security management Tool could not be started. Please contact support for more information.**

Fixed.

## **Enhanced Security: Domain users cannot get access to Security Management tool**

Fixed.

## **Error: Data configuration completed with errors. Exception has been thrown by the target of an invocation.**

Fixed: If the Assay Data Folder Root is no longer accessible by MyAssays Desktop Explorer the error: Data configuration completed with errors. Exception has been thrown by the target of an invocation. appeared. This message has been clarified to read "The Assay Data Folder Root path cannot be accessed at {path}."

## **Error: System.IO.IOException: the cloud file provider is not running.**

Fixed: For instances where a file located on a cloud server is inaccessible by MyAssays Desktop, the error message has been improved.

## **Y-Axis Range Discrepancy Between Report Curve Chart and Interactive Curve Chart**

Fixed: For some configurations the report curve chart appeared with a larger than expected y-axis range.

## **Measurement Data File Size Limit**

Import of measurement data files is now limited to 15 MB or less.

## **PreCalculate Script Not Always Updated**

Fixed. For some custom scripting configurations the PreCalculate script was updated with every other calculation as opposed to with every calculation.

## **Sample ID Visual Feedback Mismatch**

Fixed. For some assay protocols with sample types other than Unknown added to the Sample ID tab, the visual feedback did not match.

## **Unable to Get XML Logs**

Fixed. For some Enhanced Security configurations the Audit Trail log was unable to be retrieved.

## **Incorrect Windows Version Reported**

Fixed.

## **Fixes in MyAssays Desktop Pro R8.4 (detailing changes since R8.3)**

### **When New Protocol Wizard launches from the command-line, it does not appear as the topmost window**

Fixed: When launching the New Protocol Wizard from the command-line (for example when working with the WIZARD<sup>2</sup> workflow), the New Protocol Wizard was launched but appeared behind other windows.

### **Unity.ResolutionFailedException Error Opening Protocol or Results Files**

Fixed: In certain secured environments, opening an assay-results or assay-protocol file, a message box appeared advising "Unity.ResolutionFailedException: Resolution failed with error: Exception has been thrown by the target of an invocation." including stack track reference to error with

"ActiproSoftware.Products.ActiproLicenseProvider.GetLicenseInfoFromAppDomainType"

## **Updates in MyAssays Desktop Pro R8.3 (detailing changes since R8.2)**

### **Support for LIMS Sheet Export with Column Ordering and Header Search-Replace**

When using the LIMS Sheet Export functionality, an additional export option is available allowing users to change column ordering and sample table headers.

## Log Collection User Interface

To simplify collecting diagnostic logs, within the MyAssays Desktop Explorer a new user interface has been added allowing logs to be enabled or disabled, zipped, and deleted.

[Video Walkthrough...](#)

## Fixes in MyAssays Desktop Pro R8.3 (detailing changes since R8.2)

### New Protocol Wizard Custom Result Naming Application Crash

Fixed: When using custom results naming options within the New Protocol Wizard, the application crashed.

### Curve Data Table Calculations Ignore Flagged Points in Raw Data

Fixed: When raw data points were flagged, the Curve Data Table did not take into account flagging in data calculations.

### Truncated File Names in Secure Open

Fixed: With Enhanced Security enabled, using the Analysis Launcher and Secure Open, certain filenames were truncated.

### ReportPreRender Script Not Performed on Automated Export

Fixed: When using the Export automatically after every successful calculation option, ReportPreRender scripts were not performed.



## Changes Made to Rack Editor Not Applied

Fixed: When using the Rack Editor to make changes to measurement data, the changes were not saved.

## Exception of type: 'System.OutOfMemoryException' was thrown

Fixed: When using the New Protocol Wizard and defining a new import method (with Parse Cells) for a Rack Layout, the System.OutOfMemory.Exception error was thrown.

## MyAssays Desktop Enhanced Security Error: "Unexpected exception during authentication"

Fixed: When using MyAssays Desktop Enhanced Security with MyAssays Desktop Login Authentication, logging in with a domain user produced an error.

## MyAssays Desktop Enhanced Security: Security Management Failed to Load

Fixed: With domain authentication, Security Management failed to load - Security Management window appeared initially displaying "Loading users" then exited.

## MyAssays Analysis application failed to open when system performance counter tables are corrupted

Fixed: If system performance counters are corrupted then MyAssays.Desktop.Analysis.exe failed to open, with a System.InvalidOperationException at System.Diagnostics.PerformanceCounterLib.GetStringTable(Boolean) error reported in Windows Application Logs .

## Updates in MyAssays Desktop Pro R8.2 (detailing changes since R8)

## Support for Nivo 4.5 XLSX files

Support for Nivo 4.5 XLSX import, including:

- Stacker Support - supporting both the import of:
  - Multiple plates from a single XLSX (file containing data from 1 or more plates)
  - Multiple plates from multiple XLSX (multiple files each containing 1 plate). These will be imported in the order provided by the user.
- Support List and Plate format
- Import Barcode values where provided
- Import Protocol and Results Signature Data as meta-data
- Support updated ABS types ABS (S) and ABS (F)
- Support multiple operations of the same type
- Support Stacker Kinetics (limited to 1 cycle per plate measure)
- New import functionality applies to files where User Interface program version has a value of 4.4, 4.5, or higher
- Support for backwards compatibility to 2.0.2 (as far as possible)

## All Significant Digits of Precision

Within Matrices, Evaluations, and QC Observations numerical formatting settings, support for All Significant Digits of Precision has been added. This setting displays all stored significant digits of precision using fixed-point notation or scientific notation. The result contains a decimal point if required, and trailing zeros after the decimal point are omitted. Fixed-point notation is used if the exponent that would result from expressing the number in scientific notation is greater than -5 and less than 15 digits of precision; otherwise, scientific notation is used. (MyAssays Desktop uses IEEE 754-2008-compliant double-precision floating-point numbers; providing up to 17 significant digits of precision.)

## Fixes in MyAssays Desktop Pro R8.2 (detailing changes since R8)

## Error when Changing Default Font

Fixed: When changing the default font in protocols a critical error occurred.

# Updates in MyAssays Desktop Pro R8 (detailing changes since R7)

## Quick Protocol Editor

The Quick Protocol Editor allows users to edit common protocol parameters like Standard Concentrations or any configured Macros through a convenient editor without opening the protocol. [Video Walkthrough...](#)

## Export Enhancements

Multiple export feature allows users to export results in multiple formats. [Video Walkthrough...](#)

Support for exporting a single Report Sheet added. This allows users to specify a single sheet for export, perhaps formatted for LIMS. [Video Walkthrough...](#)

Enhanced Security Export Certification now provides added security to ensure the integrity and authenticity of data exported from MyAssays Desktop. [Video Walkthrough...](#)

## QC Enhancements

Control Chart functionality has been added, allowing users to specify a target mean and standard deviation. This feature offers an enhancement differing from the existing Levey-Jennings chart in that the limits will only be updated when the QC configuration is updated, making the Control Chart an excellent option for tracking controls in day-to-day operations. [Video Walkthrough...](#)

## Well Scan Analysis

Support for Well Scan Data has been added in MAD R8. This type of data contains multiple measurements for each position arranged on a 2D grid. [Video Walkthrough...](#)

## Improved Parameter Optimization

With R8, the parameter optimization process for non-linear regression (including 4PL, 5PL fits) has been improved. This update addresses special cases where previously the parameter optimization was unable to find a good fit result.

This change means that fits may now be generated where previously they were not. A consequence of this improvement is that you might see slightly higher  $R^2$  values and slightly different results for fits computed with data sets in R8 when compared with fits performed with earlier releases.

If opening results calculated with earlier releases on R8, the new analysis will apply to calculated results (i.e. press Calculate button to use new analysis implementation). Use the Versions dropdown box to switch between calculated versions.

These changes are reflected in updates to the QT data set in R8.

## Example Data Notification

When opening a protocol, the following message is now displayed:

***Example/previous measurement data has been loaded to help with getting started. To provide new data to process: use the Import Wizard or enter/paste under Measurements.***

This makes it clear that example data is in use, which can be helpful for new users when getting started, as well as to notify users in the event of any data import errors that example data has been used instead.

## Reporting Enhancements

- Automatic Sizing for Custom Text - Cells, Rows, and Columns in Sample Tables and Report Elements are now automatically sized according to font sizes.
- Sample Number Column Custom Name - Apply a custom name for the Sample Numbers column by adding the **SampleNumbersText** attribute to the SampleTable report element in the XML tab.
- Include Sample Numbers in Curve Data Table - Include the Sample Numbers column in the Curve Data Table by adding a Property content setting **IncludeSampleNumbers** to the CurveDataTable report element in the XML tab.

- Transform Configuration Report Element - New Transform Configuration Report Element has been added to display existing transform configuration summary including input and output matrices.
- Page Template Report Information - Users will now be notified if Report Elements are added or removed from a Protocol with a Page Template configured.

## Scripting Enhancements

- Script Compile and Validate - C# code added to the Scripting feature of MyAssays Desktop is now compiled and validated when the **Apply** button is pressed to alert the user to any compile time build errors.
- Script Assemblies Automatically Included - The script engine now automatically discovers Assemblies inside the protocol/results file and adds them by default.
- Script Log Entry - A custom script log is now added under the Logs folder in the package root.
- ReportPreRender Content Insertion - ReportPreRender event script functionality now includes a series of helper methods to assist in inserting content into the report.xml.

## Data Analysis Enhancements

- LayoutNumGroupsTotal - **LayoutNumGroupsTotal** returns a total number of groups of the specified type on all plates.
- Custom Fit support for DRC - Support has been added for custom curve fit equations in the Dose-Response Curves transform. [Video Walkthrough...](#)
- PosValue Functions - New functions **PosValueByIndex** and **PosValueBySampleReplicate** have been added.
  - PosValueByIndex({WellIndex}) returns the value of the position specified. For example, PosValueByIndex(1) returns the value of position A1.
  - PosValueBySampleReplicate("{SampleTypeName}",{GroupNum},{ReplicateNum}) returns the value of the specified replicate. For example, PosValueBySampleReplicate("Unknown",1,2) returns the value of the position occupied by the second replicate of Unknown1.

- AIC/AICc/BIC Scoring Methods - AIC/AICc/BIC Scoring Method updates now use - AIC, -AICc, and -BIC for more accurate representations of fit model quality.
- ParamLayout support for DRC by position - New tabbed section added to Dose Response Curves and Parallel Line Analysis protocols to allow users to specify the dose arrangement on multiple Dose Response Curves transforms.
- Custom Fit Expression with Group Reference - The value of samples on the input matrix can now be referenced in custom curve fit expressions. For example:  $(m*x)+Standard1$  will reference the value of Standard1 on the input matrix.
- Curve Overlay Multiple Container - Curve Overlay report element functionality has been expanded to support overlaying curves from multiple containers (for example in Multiplex assays, or Multiple Plate assays).
- Calculate Always Enabled - New option under **File | Developer** to allow the Calculate button to always be enabled.
- Kaleido 3.5 Meta Data Import - Meta data contained in Kaleido 3.5 data files is now automatically imported.
- New Statistical/Probability Expression Functions - New statistical functions **stdev.s** and **stdev.p** documented. More... New probability functions **chisq.dist.rt**, **f.dist.rt**, and **f.inv** added. More...

## File Management

- Bufferized MTA Logging - Logging is now bufferized to improve performance of protocol files, allowing calculations to be completed in less time.
- Standard Rules for MTA Logging - Logging rules have now been standardized

## Enhanced Security Enhancements

- Security Configuration Summary Tool - The new Security Configuration Summary Tool provides a summary of the Enhanced Security Configuration without requiring the user to open the Security Configuration Wizard.
- Security Management Refresh button - A Refresh button has been added to Security Management to apply changes and continue editing without needing to close and reopen the Security Management tool.

- Export Certification - Export Certification now provides added security to ensure the integrity and authenticity of data exported from MyAssays Desktop. [Video Walkthrough...](#)
- SQLite Database for Audit Trail and Login Logs - Enhanced Security now uses more resilient SQLite database for audit trail and login logs. This is configured automatically with all new ES R8 installations. If migrating from a MAD release prior to R8, then re-run the ES Configuration Wizard after installing R8 (following the instructions at: [Upgrading from an Earlier Version | If working with Enhanced Security:](#))
  - Within the Security Configuration Wizard, by selecting the recommended SQLite Database File Logging option, Logging data will be migrated to an SQLite Database for improved resilience. Existing logging data will automatically be backed up as part of the migration process.
- Import Impersonation - Import Impersonation can be used to provide secure access to protected data folders, granting MAD ES access to the content in the protected folder, without granting end-users access to the content outside of MyAssaysDesktop. [Video Walkthrough...](#)

## Fixes in MyAssays Desktop Pro R8 (detailing changes since R7)

### Grid Editor Column/Row Selection Editing

Fixed: When selecting multiple columns or rows in the Grid Editor, values could not be entered.

### Response for Dose Calculation on Multiple Charts

When plotting Dose Response Curves separately, the response will now be displayed on all charts.

## Issue with Row and Column References

Fixed: With some configurations the RowN and ColN expressions returned an Index out of range error.

## Missing text in ScatterPlotXY Report Element Chart Legend

Fixed

## Poor Fit

When constraining some fit methods the  $R^2$  value was not calculated and the fit appeared to be poor. This has been addressed through the improved parameter optimization.

## Cropped Images in Layout View

Fixed: With certain resolution scale factors, report images appeared cropped.

## Custom Font cell size issues in Excel reports

Fixed: With certain Custom Font settings, the cells in exported Excel reports were not automatically resized. All text report elements cells, rows, and columns are now resized according to font size.

## Dose By Position Drop-Down Panel Closes Unexpectedly

Fixed.

## Setting Sample Table Replicates to Average Flags Samples

Fixed: With some sample types setting the Properties | Matrices | Sample Table Replicates setting to Average caused the sample results to be Flagged.



## Unable to Download Assay Information

Fixed: For some users with Windows 7 when using the search function in MyAssays Desktop an error "Unable to download assay information" is received.

## WIZARD XML InfoFlags Not Recognized

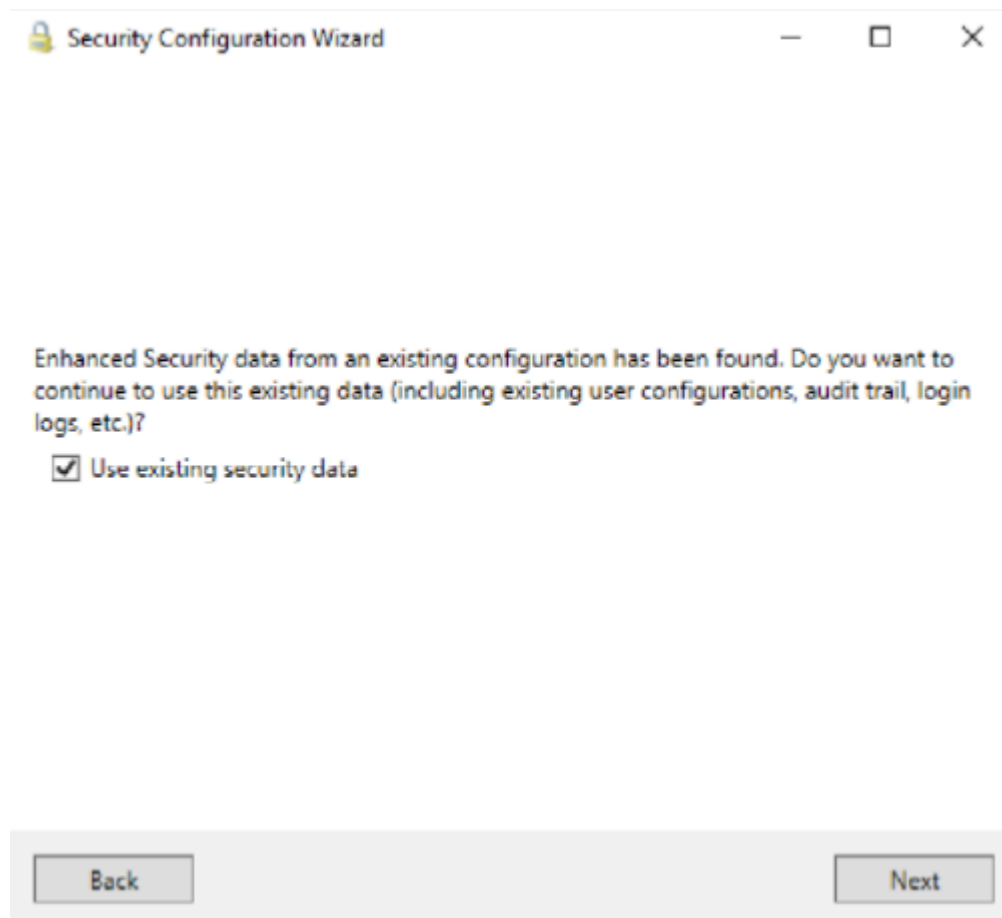
Fixed: For some XML data imports where multiple InfoFlag characters appeared the data was not imported.

## Enhanced Security Windows Authentication User Validation

Users are validated based upon existing security configuration.

## Enhanced Security Error: "The audit trail has been corrupted and contains invalid data. Please contact [support@myassays.com](mailto:support@myassays.com) for assistance."

Fixed: Upgrade to MAD R8 to fix and repair logs. After installing, re-run the Enhanced Security Configuration Wizard, following the instructions at: [Upgrading from an Earlier Version | If working with Enhanced Security](#): The **Use existing security data** option should be checked:



On the next step select the option to **Migrate to SQLite Database Logging (Recommended)**. Completing the Security Configuration Wizard will backup existing log data as part of the migration process.

## Fixes in MyAssays Desktop Pro R7.2 (detailing changes since R7)

### Unable to Display the Report in a Page View

Fixed: Renaming certain report elements caused an error in which the report could not be displayed in a page view format.

## Error Importing Data into Non-MTA Protocols (like AlphaLisa 96-well Protocol)

Fixed: Importing Nivo XLSX data into non-MTA protocols caused an error importing the data.

## Unity.ResolutionFailedException Error Opening Results Files

Fixed: When trying to open certain .assay-results files an internal unexpected error occurred.

## Internal Unexpected Error Occurred: MyAssays.Data.Persistence.PmcExtensionsException

Fixed: For protocols using a Rack Layout, curve fits that calculated infinity values returned an error.

## Updates in MyAssays Desktop Pro R7 (detailing changes since R6)

### Electronic Signatures

Enhanced Security Edition introduces Electronic Signatures to meet 21CFR11 requirements. [Video Walkthrough...](#)

- Sign assay results or protocols. User must provide valid credentials to sign.
- Provide reason for signing (e.g. approve, lock, take authorship, review, etc.)
- Assignable signing rights
- Additional security **ResultAuthorshipXXX** authorizations for managing functions. For example, ES can be configured so that results can only be signed, exported, printed after being electronically signed for authorship. Also, users can be assigned so that they can only use approved protocols.

- Electronic Signature report element - to include electronic signature information in the printed report.

## Other Enhanced Security Enhancements

- MyAssays Desktop ES Manager Configuration Backup Tool - when ES is enabled this tool is available for administrators from **MyAssays Desktop Explorer | File | Data | Enhanced Security Configuration Backup**. This will create an encrypted and password protected backup ZIP of the ES configuration. This will use a default private password. To set a custom password set registry entry: **HKEY\_LOCAL\_MACHINE\SOFTWARE\WOW6432Node\MyAssays\MyAssays Desktop\Security\@BackupPassword**. More information...
- Support for viewing large audit trail/login logs (upto 100K entries)
- User ID stored in audit-trail/login logs. When viewing log, if a username has changed then both the previous and new name are now reported.

## Certificate Validation

New utility for validation of MyAssays Desktop and MD5 certificates [Video Walkthrough...](#)

## Developer Script Editing Tools

Tools and editors to support scripting MyAssays Desktop analysis with C#. [Video Walkthrough...](#)

## Parallel Line Analysis

New features including improved multiple plate support, evaluations editor and and example protocols. [Video Walkthrough...](#)

## Transforms

New transforms:

- XY Replicates Function Transform [Video Walkthrough...](#)
- Expression by Sample Group Transform [Video Walkthrough...](#)

- Expression by Sample Replicates Transform [Video Walkthrough...](#)

## Expression Functions

- **PosValueByIndex** - PosValueByIndex({WellIndex}) returns - where WellIndex is a 1-based well index (e.g. valid range is 1-96 for 12x8 plate. For rack layouts range depends on number of samples measured). If WellIndex is out of range then ArgumentException is thrown with description (including valid range)
  - PosValueByIndex (1) - returns the value of position A1
  - PosValueByIndex (13) - returns the value of position B1 (on a 12x8 layout)
  - PosValueByIndex (97) - returns error message "WellIndex 97 is out of range (valid range 1->96)
  - PosValueByIndex(PosNum()+2) - returns the value at the position two to the right of the current position.

## Multi Column CSV non-measurement Data Import

Import data from multi column CSV files. Select which columns to import. [Video Walkthrough...](#)

## Dose Response Curves Updates

- Output Matrix option - set results as specified or computed doses
- Evaluations [Video Walkthrough...](#)

## Standard Curve Fit Evaluations

Property editors to simplify performing evaluations from curves (such as IC50/EC50). [Video Walkthrough...](#)

## Save Sample ID Options

Option to save (or not to save) sample IDs with the protocol. This can be found under **File | Save | Sample IDs** when working with a protocol.

## Reporting Features

Report elements editor updated to tree structure. Root element can be used to edit additional settings including report Font. The default Font for all assays can be set from **File | View | Default Font**.

Report Scaling and Sheet Ordering options [Video Walkthrough...](#)

Sample Table Filter Column Hide - option to hide the sample column used for filtering. See **Filter Column Hide** property of Sample Table (in **Sample Data Processing** group using **Filter**)

## Overview Video Link

If there is no Overview or Resource Reference text defined and the current user can edit Overview/Resource Reference then a hyperlink to video explaining this feature is provided.

## Nivo 4.x updates

Support for new Nivo 4.x file formats including MD5 certificate validation. [Video Walkthrough...](#)

## Training Program Content

New free-access training content at <https://www.myassays.com/myassays-desktop-training-course.html>

## Enhanced Security Training Program Content

New training course for Enhanced Security/GxP licenses (with training option). This restricted-access course has been designed to equip users in regulatory environments with training to secure their system. Features:

- Video content with interactive links
- Assessments
- Tracked Attempts/Score Results
- Multi-track course
- Participation/Results certification

Available at <https://www.myassays.com/myassays-desktop-es-training-course.html>

## Fixes in MyAssays Desktop Pro R7 (detailing changes since R6)

### Import Sample IDs with CSV

Fixed: When importing sample IDs which contain commas, the sample ids were imported and reported under Sample IDs tab as expected. However, in SampleTable, the commas used in the sample IDs split the sample IDs incorrectly.

### CurveDataTable %CV column when no replicates

Fixed: In calibrators table %CV columns are now not include if there is only 1 position per calibrator (i.e. not replicated)

### Importing non-measurement data which is targeting a numeric import

Fixed: When importing non-measurement data that is targeting a numeric import if non-numeric data is selected then an unclear message was displayed.

## **Transforms calculate empty/skipped measurements**

Fixed: An empty position should be treated as flagged without a value, the transform output for a position which is flagged without a value should also be flagged without a value.

## **Report Initialization - Unable to display the report in a spreadsheet**

Fixed: If chart includes more than 256 series (limit) then warning is given

## **Failed to test destination settings. Please fix error described below and try again:**

Fixed

## **Parse Cells incorrectly imports to single line**

Fixed

## **ATP Lite Protocol does not accept standard concentrations in M (units)**

Fixed

## **Plot Calibrators impact the setting of Points on Curve**

Fixed

## **Critical error when adding transform/evaluation/validation/advice items**

Fixed



## Adding Matrix View - Calculations do not complete

Fixed

## Unstable Evaluations Control

Fixed

## System.InvalidOperationException: Nullable object must have a value. with ASSAY-PROTOCOL

Fixed: Now filenames with extension in any case are supported.

## DRC Multiple Plate Common Doses Transition

Fixed: Selecting "Apply the same configuration to all plates"

## DRC coefficients reference for multiple plate

Fixed: From all applicable expressions (including Evaluation and Constraint expressions) it should be possible to refer to the computed tovs of each group of each coefficient for both a specific plate and the current plate.

# Updates in MyAssays Desktop Pro R6 (detailing changes since R5.3)

## Advice Feature

Include automatic advice prompts inside protocols to help users identify and troubleshoot common issues easily by providing helpful text and/or links to additional resources. Advice messages can be displayed when conditions are met such as poor %CV or low  $R^2$  values. Use the advice feature to define your own conditions and messages to display. [Video Walkthrough...](#)

## XY Reduction Area Under Curve Transform

New XY Reduction transform named **XY Reduction Area Under Curve** for computing Area Under Curve using trapezia or summation method. [Video Walkthrough...](#)

## Scripting Feature

Introducing new scripting capabilities to MyAssays Desktop protocols; this opens up a wide range of possibilities for adding new functionality to your protocols. Scripts have access to the MyAssays Desktop object model which means that they can perform custom processing of collected data, protocol settings and results. A script can output results to external resources (such as files or databases) or output custom content to the MyAssays Desktop report.

## XYPlot Report Element

New report element to provide a chart of overlaid XY plots of the specified positions from the specified matrix and container. Select which positions to plot and overlay together. Use this control to include overlaid kinetic or spectral plots in your report. [Video Walkthrough...](#)

## SampleReportLabel Matrix Modifier

A sample report label definition expression condition can now make reference to data in a preceding matrix. This is available through a matrix number modifier to the x reference. E.g. **x.{1-based matrix number}** (x will continue to refer to the value of the sample.) For example, with the following label condition each sample in the current matrix will be labelled based on the relationship of data on the first matrix (x.1) and the computed asymptotes of the curve: **and (x.1 > min (tov1.a,tov1.d), x < UTK CAL6)** [Video Walkthrough...](#)

## Reporting Enhancements

- Sheet Print Scaling Options - New XML attribute SheetPrintScaling on MatrixTransformAnalysis\Report with options: • None • FitSheetOnOnePage • FitAllColumnsOnOnePage • FitAllRowsOnOnePage FitAllColumnsOnOnePage is

most useful for printing sheet views where contents should not be split with horizontal page breaks.

- Report Element Text IsBold - Option to display text element in bold.
- Word engine output with no page template - Improvements to Word exports where no page template is defined. This include improved spacing between report elements.
- SampleTableColumnPosition - New XML attribute SampleTableColumnPosition on Transform\ReportContent\Item for setting the column position.
- PositionsText - New XML attribute PositionsText attribute on SampleTable to provide a custom name for the Positions column.

## Dose-Response Curve Enhancements

Various enhancements to Dose-Response Curve analysis. [Video Walkthrough...](#)

- Dose by Position - Define the dose of each sample by each position. This enables complete flexibility in sample arrangement. [Video Walkthrough...](#)
- Plot Separate Charts - New option to plot a separate chart for each dose-response curve (in addition to overlaying).
- {SampleID} Macro - If PlotSeparateCharts="true" then new {SampleID} macro can be reference in DRC attributes: • ChartTitle • XAxisTitle • YAxisTitle This macro expands to the Sample ID of the separate chart's group
- Error Bars - Option to include error bars on Dose Response Curve calibrator points. Note, this only applies where a separate chart is used to plot each curve.
- Plot Calibrators - Option to include or exclude the calibrator points on the Dose Response Curve chart.
- Named FitTable\Evaluation - Option to name the result of an evaluation so that it can easily be referred to via a TOV. If the Name attribute is specified for an Evaluation then a TOV is created (for each evaluated sample).
- Multiple Type Support - Dose-Response analysis can now be performed on multiple sample types being analysed and plotted together by the same transform (e.g. Unknown, Reference and Control).
- Multiple plate DoseResponseCurves FitTable Evaluation group scoped coefficient expression references - FitTable\Evaluation\Expression support multiple plate group references. Group references can be used to refer to the coefficient of a specific

group, e.g. "c.Unknown1" is the c coefficient of the first unknown on the current plate. To refer to the group of a specific plate use #2, e.g. "c.Unknown3#1" refers to the value of the c coefficient for the third Unknown group on plate 1. (Note, it is not currently possible to forward reference plates, you can only reference data on plates already computed at time of evaluation, i.e. the references plate must precede the current plate.)

## Curve Fitting Enhancements

- Curve Overlay Support for General Curve Fit - Report element and editor for overlying General Curve Fit curves with Curve Overlay report element.
- Standard Curve Fit Chart Title - Move convenient option for setting Standard Curve Fit Chart Title via chart editor.
- New Fit Constraint Property editors for defining fitting constraints in transforms: • Standard Curve Fit • General Curve Fit • Dose Response Curves [Video Walkthrough...](#)

## Folder Poll Integration Enhancements

Various enhancements to Folder Poll integration including:

- Include Subdirectories option
- File Filter now supports files with no extension
- Support for encrypting Folder Poll configuration

## Data Import Enhancements

- MicroBeta2 Import - Support for MicroBeta2 .dat files (single and multiple plate)
- Multiple File Cells Import with empty cells - New support for cells importing (e.g. Excel import) where cells are empty across multiple files.

## Expressions Enhancements

- Various new listing handling functions
- Various new function for obtaining lists of values from XY data (ready for further processing). For example, **mean (PosYValuesByIndex(1))** reports the average of all Y not-flagged values of position A1 (for the evaluation context's container and matrix)

## Multiple Matrix Editing

Select multiple matrices for applying common configuration settings. [Video Walkthrough...](#)

## PositionExpression All Plates/Analytes

New option to apply a layout expression configuration to all plates or analytes. Additional improvements to support a different configuration for each plate/analyte.

## Reference Sample Type

New preinstalled Reference sample type.

## ValidationsTable Include Failure Details

Where a validation fails an additional column **Failed Samples** will list all the samples that failed the validation. Note this only applies to failed expressions of type "Expression with Every Sample Group" or "Expression with Every Sample Replicate". The new behaviour is enabled by default but can be disabled through the **IncludeFailureDetails** XML attribute.

## Suppress Advice Syntax Error Option

Where there is an advice syntax an error message is displayed in the report by default. In some cases this is not desirable. To handle these cases there is an optional attribute under AdviceTables\Table element: **SuppressSyntaxErrors**. This is false by default but if set to true (can only be set in XML) then any advice syntax errors associated with the advice table will not be displayed in the report.

## **Blank Correction and XY Blank Correction transform with multiple plate and blank on only one plate**

For multiple plate assays, if there is > 1 container and there is only 1 plate containing the specified BlankType and BlankGroup, then MAD will now automatically perform the blank correction using that single blank group across containers. For example, if reading 4 plates with blank correction defined to use sample Blank1 but there is only 1 Blank1 group defined on plate 2 then all samples will be blank corrected using the value of Blank1 from plate 2. This applies to both the (endpoint) Blank Correction transform and the XY Blank Correction transform

### **Flagging XY Positions**

Flagging XY positions was slow, this process has been greatly speeded up.

### **New Example Files**

Parallel Line Analysis example files

## Fixes in MyAssays Desktop Pro R6 (detailing changes since R5.3)

*Fixed: 3D View not working correctly with certain regional settings*

*Fixed: XY points appeared as flagged in XY Chart view when they are not after importing XY data.*

*Fixed: DoseResponseCurves Flagged Samples causes Unable to produce a valid report for the given configuration. Please see details in a log file.*

*Fixed: MatrixView report element did not now work with XY Data.*

*Fixed: If imported Sample ID values contained a comma then they were not displayed correctly in Sample Table.*

*Fixed: For Auto Smoothed Spline fit method, in certain cases this would result in unexpected error message: Specified argument was out of the range of valid values. Parameter name: index.*

*Fixed: Unexpected behaviour with Insert Transform.*

*Fixed: Add provisions to minimise possibility of Enhanced Security log file (audit trail or login log) becoming corrupted. Also, better handling of corrupted log states.*

## Fixes in MyAssays Desktop Pro R5.3 (detailing changes since R5.2)

**Fixed: System.ArgumentException: The given Pmc data could not be formatted.**

With certain system Region and Language Format settings (such as Corsican), MAD would fail to import data from selected files. This issue also impacted the Standards Curve with Titres and Parallelism Plots (Dual) protocol.

## Updates in MyAssays Desktop Pro R5.2 (detailing changes since R5)

*Support for Victor Nivo ALPHA measurements*

As included in Nivo 2.9.31 update

*Enhanced Security Autologin Optional Support for Any Windows Account*

Via new AutologinAnyWindowsAccount registry setting.



## Fixes in MyAssays Desktop Pro R5.2 (detailing changes since R5)

*Fixed: ArgumentException selecting "Request an Assay Protocol"*

*Fixed: File | Information | Assay Name copy button does nothing.*

*Fixed: MS Word does not always get focus after pressing Edit Template button.*

*Fixed: New Protocol Wizard would crash if USB device was removed (after importing data from USB device)*

*Fixed: If launching Analysis with missing or incorrect assay-protocol: Internal unexpected error occurred: Unity.ResolutionFailedException appeared.*

### *Various intermittent stability issues with Enhanced Security*

- Fixed: Redundant and obscured Save Changes Prompt with ES and Windows Log In when using **/calc** and **/exit** with an account that does not have protocol save permissions (e.g. Run and Review Only). With this fix it is now not necessary to use **/noappwin** workaround in this case.
- Fixed: MyAssays.Desktop.Explorer has stopped working intermittent issue when launch MADE ES.
- Fixed: Log Out and Exit intermittently failed to complete.
- Fixed: Intermittent error when launching MADE: System.Runtime.InteropServices.COMException (0x80070006): The handle is invalid. (Exception from HRESULT: 0x80070006 (E\_HANDLE))
- Fixed: Intermittent error when launching MADE: System.IO.IOException: The handle is invalid.
- Fixed: Intermittent error when launching MADE:

System.UnauthorizedAccessException: Access is denied.

- Fixed: Improvements to handle unstable connection to SyncService.

## Updates in MyAssays Desktop Pro R5 (detailing changes since R4.2)

### *RIA Support*

- WIZARD<sup>2</sup> Gamma Counter Data Import Support (CSV and XML) - [Video Walkthrough...](#)
- WIZARD<sup>2</sup> Gamma Counter Integration [Video Walkthrough...](#)
- WIZARD<sup>2</sup> Gamma Counter Integration with Enhanced Security [Video Walkthrough...](#)
- 29 Example RIA protocols included along with common rack layouts

### *EnVision Import Support*

- Support for importing multiple matrix kinetic data (in Plate Format)

### *Chart Appearance Editor*

- Update report charts without recalculation using new interactive chart editor – [Video Walkthrough...](#)

### *Kinetic Data X-Axis Time Options*

- Plot kinetic data with milliseconds, seconds, minutes, hours as x axis units

### *Data Analysis*

- Robust Standard Deviation Function – an alternative to standard deviation that is better suited for handling outliers
- Median Absolute Deviation Function
- QC Observation References – specify evaluation and validation conditions to compare assay results against historical data

- Sample Table Filter by Regular Expression, Numeric Expression and Text
- Numerical Field Data (including support for analysis on numerical field data references)

### *Reporting*

- Import Certification Report Element - [Video Walkthrough...](#)
- Single-Value Value-Bars removed from tables
- Axis Log Base Options
- Report Element Size Options
- Report Element Move to Top/Bottom Controls
- Matrix View Heat Map Options
- Evaluation Tables Custom Headers
- Standard Curve Fit Calibrator Plot Options - select to display replicates and/or averages in chart
- Sample Group Numbering Reporting Options – include/exclude sample group numbers as applicable
- Sample ID Type Selection – assign Sample IDs to sample types other than Unknowns

### *File Management*

- Field Data Import Support from Command Line
- Field Data Import Support in Launcher Tool
- Dynamic Worklist Filename Import - [Video Walkthrough...](#)
- Export Naming – Append Number Option
- Active Windows List (in MADE Welcome)

### *Enhanced Security*

- User Management Logging - [Video Walkthrough...](#)
- Audit Trail and Log In Log Print/Export Action Logging

### *MyAssays Desktop Explorer Launch*

- Launch notification added (including notification if MADE is already running and switching is in pro)

## **Fixes in MyAssays Desktop Pro R5 (detailing changes since R4.2)**

*File | Information | Assay Name copy button not working*

Fixed in R5.

*Redundant and Obscured Save Changes Prompt with ES and Windows Log In when using /calc and /exit with an account that does not have protocol save permissions (e.g. Run and Review Only)*

Fixed in R5.

*MS Word does not always get focus when user presses Edit Template button.*

Fixed in R5.

*Report Initialization Error with Empty Histogram*

Fixed in R5.

*"Failed to save assay results using current Results Naming setting. Press Save as to save assay results to another location." Error with long filenames*

Fixed in R5.

*DNA Quantification (96 well) Protocol only allows 2 standards in edited layout*

Fixed in R5.

*"Positions were not measured" with multiplex assay*

Fixed in R5.

### *General Curve Fit Evaluations corrupted report*

Fixed in R5.

### *Cannot create Sample Types folder at: \My Assays\Sample Types error message when using New Protocol Wizard*

Fixed in R5.

### *XYPlot showed data points table*

Fixed in R5.

### *Auto-Print settings were not saved*

Fixed in R5.

### *Significant Figures Trailing Zeroes*

Prior to R5, numerical the Significant Figures numerical formatting would truncate trailing zeroes after the decimal point. The Significant Figures numerical formatting method has been updated to follow the widely accepted definition of Significant Figures [https://en.wikipedia.org/wiki/Significant\\_figures](https://en.wikipedia.org/wiki/Significant_figures) to include trailing zeroes after the decimal point.

### *MyAssays Desktop Explorer occasionally crashed on launch when using Enhanced Security and MyAssays Desktop Log-In Authentication*

Additional stability enhancements implemented in R5.

## **Updates in MyAssays Desktop Pro R4.2 (detailing changes since R3.2)**

### *Online Training Course*

Online training course with extensive video resources and assessments available from [here](#).

### *Enhanced Security Edition*

The Enhanced Security edition is now available for secured and traceable work under regulatory requirements. It provides user-management and security protections that comply with working in GxP and 21 CFR Part 11 environments. This includes:

- Limited access to features, protocols, and data using strong authentication services and login settings
- Secured working environment for local and domain user accounts
- Tracked user sessions including logging in and out, as well as unauthorized attempts
- Different authorization groups that allow or deny users to access features, change (create, modify, or delete) the data and protocols, or a combination thereof
- Time and date stamped audit trail of authorized user activities
- Verified source data quality and integrity with cryptographic validation of electronic signatures
- Secured workflow automation and simplification for different environments and data handling methods
- No complicated management or redundant administrator tasks



The Enhanced Security edition is available for users with Enhanced Security license.

### *New Command-Line Parameters*

- **/notopmost** – Use this to disable bringing the MAA window to the top.
- **/autologin** – When working with Enhanced Security edition, this command allows you to run routine operations under an Autologin account.

### *Field Data*

Configure your protocols to include important information such as additional metrics from your instrumentation source or detector parameters for each sample position. With new Field Data feature, you can store all relevant details in field matrices, label them, and report alongside raw measurements and the results of data analysis.

If readings contain more than 5 field matrices, including all matrices will make the report excessively large and hard to manage. That is why no field data matrices are included into the report by default. You can add additional matrices using **Assay Properties | Matrices | Include in Sample Tables** when configuring the data analysis.

### *DOC and DOCX Export Types*

When you select Custom export format, you can select to export the data analysis results in the .doc and .docx extension types.

### *Updates in Expressions Library*

#### *Row and Column References*

Now you can refer to samples in specific columns or rows in expressions.

#### *LayoutType Function*

For writing expression-based conditions for a particular sample type.

#### *Conditional Function Update*

To shorten expressions, now you can use **if** as a contraction of the **ifthenelse** function.

#### *New Calculation Function*

When working with curve fitting, now you can calculate the area under the 4PL or 5PL curve with **auc** function.

*Syntax:* **auc(method,xmin,xmax,number,coefficients...)**

Calculates the area under the plotted 4PL or 5PL curve using the sum of trapezia method. The area under the curve is the area between the curve and the x-axis. Areas below the x-axis are considered negative.

Input parameters:

- **method** – This is either 4PL or 5PL fit method. Specify within single or double quotes: "**4PL**" or '**4PL**'; "**5PL**" or '**5PL**'.
- **xmin** – The minimum numerical value of the area on the x-axis.
- **xmax** – The maximum numerical value of the area on the x-axis.

- **number** – The number of trapezium intervals for computing the area under the curve. Higher number of intervals gives more accurate results. We recommend to use a value of 1000.
- **coefficients** – The coefficients of the selected **method** that must be specified in the following order:  
 For 4PL: **a, b, c, d**  
 For 5PL: **a, b, c, d, m**

### *Changed Version Numbering*

Starting from **R4**, MyAssays Desktop is versioned by the release number.

### *Constrain Coefficients of the Fit*

When working with endpoint curve-fitting transforms (Dose–Response Curves, General Curve Fit, and Standard Curve Fit), you can define constraints to guide the curve fitting process as required. To do this:

1. In the **Assay Properties** panel, select the **XML** tab.  
 If the **XML** tab is not immediately visible, click << **Show All Properties** to expand.
2. Depending on the transform you're adding coefficient constraints for, locate the appropriate element:
  - For Standard Curve Fit, the **StandardCurveFit** element.
  - For General Curve Fit, the **GeneralCurveFit** element.
  - For Dose–Response Curves, the **DoseResponseCurves** element.
3. Add a **FitConstraints** child element.
4. Add a child element **Constraint** for each required operation. Set the attributes in accordance with the syntax below.
5. Add a child element **Constraint** for each required operation.

For each constraint, with the **Coeff** attribute, specify the coefficient on which the constraint will be applied.



The values of these constraints can be specified using an expression (that results in a single numerical value) and may refer to a TOV. The interpretation of the constraint depends on the type of restriction setting:

- **Fixed** – Sets a coefficient to a fixed value
- **LowerBound** – Limits the search range for the coefficient to be greater than the specified constraint
- **UpperBound** – Limits the search range for the coefficient to be less than the specified constraint



The **UpperBound** and **LowerBound** attributes can be used separately or in a conjunction. However, **Fixed** type overrides any **UpperBound** or **LowerBound** setting.

### *Dose–Response Curves Transform Updates*

- **Overlay Multiple Plate Charts** – For multiple plate assays, select this check box to plot the charts from all plates on a single overlaid chart.
- **Label the Results in the Dose–Response Fit Table** – When configuring custom evaluations, you can apply labels to results that satisfy your set conditions (In the **XML** tab.):

```
<FitTable>
  <Evaluation Description="R2" Expression="R2">
    <SampleReportLabel>
      <Rule Condition="x < 0.9" Label="{x}
LOW" Symbol="None" BackColour="#FFFFFF00"
ForeColour="#FFFF0000" />
    </SampleReportLabel>
  </Evaluation>
</FitTable>
```

- **Reference Specific Dose–Response Curves in Expression** – With **groupnum** context variable, you can refer to the group number of the dose-response curve on the current plate.

- **Automatically Determine the Lowest and the Highest Values** – When calculating area under curve with **auc** function (described above), use **dosemin** to automatically determine the minimum  $x$  value and **dosemax** to automatically determine the maximum  $x$  value.
- **Constrain Dose–Response Curve Fits** – You can constrain dose–response curves fit coefficients to compare the resulting curves.
- **Select Chart Size for Page-Based Report** – Select the size of chart in the Transform Content report element.
- **Scaling of the Chart** – When selecting to show or hide the sample groups, the chart is adjusted to provide a clear view of both individual and overall curves.

## *New Endpoint Transforms*

### *Expression by Sample Type*

With this transform, you can evaluate different expressions (in terms of  $x$ ) for each sample type defined on the layout simultaneously.

### *General Curve Fit*

New transform that allows fitting a curve with external standards specified by the user. You can also define what values (the  $x$ s or  $y$ s) are computed from the plotted curve.

### *XY Reduction Peak from Fit*

Using this new reduction transform, you can reduce kinetic or spectral plots to interpolated peak value determined from the fitted curve at a position. The result can be set to the  $x$  or  $y$  value at the peak, with the peak being defined as either the minimum or maximum value.

### *Reference External Resources in Protocols*

Using the Resource Reference Manager, you can include links to external files, folders, and websites in the Overview tab of assay protocols.

### *Label Symbols*

Clearly indicate if the calculated results satisfy your filters with graphical icons alongside your label text:

- **None** – Display no icon
- **Pass** – Display the ✓ icon
- **Fail** – Display the ✗ icon
- **Question** – Display the ? icon

### *Improved Evaluation UI*

Now evaluation tables and associated evaluations are displayed in a tree view. Select the evaluation or evaluation table to configure its settings. Also, now you can configure results to be reported with label and/or colour in accordance with the specified conditions.

### *Named Evaluation Variables*

With **Name** setting, you can name your evaluation result and use it in further analysis. This is useful when splitting lengthy evaluation expressions into smaller parts, applying labels, or flagging using the evaluation result.

### *Improved Validation UI*

Now validation tables and associated validations are displayed in a tree view. Select the validation to configure its settings.

### *Include Header in Evaluations and Validations Tables in the Report*

Using this new setting, you can choose to report Validations Tables or Evaluations Tables with or without a header.

### *New Print Options*

Now **File** backstage view in MyAssays Analysis features **Print** tab where you can configure the following printing settings for your assay:

- Select **Print report on first calculation** check box to automatically print the first generated report using the default printer.
- With **Print** option, you can print current version of the results with the default associated printer.
- With **Custom Print**, you can configure the printer and printing settings for your

report.

- Click **Print Preview** to review the layout of your report before printing it.

### *Updated Transforms Descriptions in MAA*

### *Support for Kaleido 3.0 XML*

Support for Kaleido 3.0 XML format. The updates include support of:

- Import text-based values where type="string" as field data (e.g. "Analysis Quality"). Limited to endpoint only single plate measurement files (field data is not imported for kinetic/multiple plate image analyses)
- Support updated time string format HHH:MM:SS.ms (and HH:MM:SS.ms)
- Remove previous time point workaround (implemented for Kaleido 2.0 bugs)
- Support multiple plate data in single file (plateBC attribute)
- Support new assay type TRF with two time windows, data to be imported as two endpoint matrices (one for each window)
- Support for backwards compatibility for Kaleido 2.0 (as far as possible)
- New Folder Poll release to support new Kaleido 3.0 output folder ("C:\ProgramData\PerkinElmerKaleido\Data Transfer") whilst retaining support for Kaleido 2.0 configuration
- Integrated with changes for Nivo 2.5 to support non-measured wells

For the latest documentation relating to working with MyAssays Desktop Pro and EnSight (via Kaleido software):

- [MyAssays Desktop Pro for Kaleido 3.0 \(Installation Notes\).pdf](#)
- [Using MyAssays Desktop with Kaleido 3.0.pdf](#)

### *WIZARD<sup>2</sup> Import Integration*

Improved import of measurement data from the WIZARD<sup>2</sup> manager software for RIA and rack-based assays. The integration includes automatic import of associated metadata, field data, sample bar code, and spectrum channel counts from the XML files. The import of partial plates (the unmeasured positions are imported as empty) and plates that contain flagged data is also supported.

The files with combination of rack sizes or with multiple repeats (where Repeat≠1) are not supported with this enhancement.

### *Support for Import of Nivo 2.5 XSLX Format*

Extended automatic import of data from the Victor Nivo 2.5 format. The updates include support of:

- The new <INTEGER> <SPACE> OPERATION naming convention
- List and plate formats for kinetic measurements
- Change in Nivo export format:
  - Combination of two technologies, such as Abs kinetics and FI Endpoint, in one protocol exported in a single Excel sheet one below the other. The previous version (v2.0.2) exported each of them to a different sheet.
  - Import of empty cells as excluded values (instead of 0)

Backwards compatibility to 2.0.2 is maintained as far as possible.

### *Curve Overlay Enhancements*

For library curves stored in the default **Curves** folder (under the **MyAssays** root folder), now you can specify only the filename and extension of the file instead of the full path (which is required for the files outside your root folder).

Also, you can specify the precision for both axes on the chart with **XAxisPrecision** and **YAxisPrecision** attributes.

### *Installed Protocols Updates*

Some installed assays are available in demo mode unless a particular Edition or Add-On is installed.

#### *Dual DPM*

New protocol preconfigured for rack-based assays and RIA.

#### *Dose–Response Curves for EC50 Updates*

- This protocol is now available for both 96- and 384-well microplate layouts.

- Protocol now produces measurement and calculation details for all calibration doses used in the fit.
- Improved scaling of the chart when viewing it with or without data points.

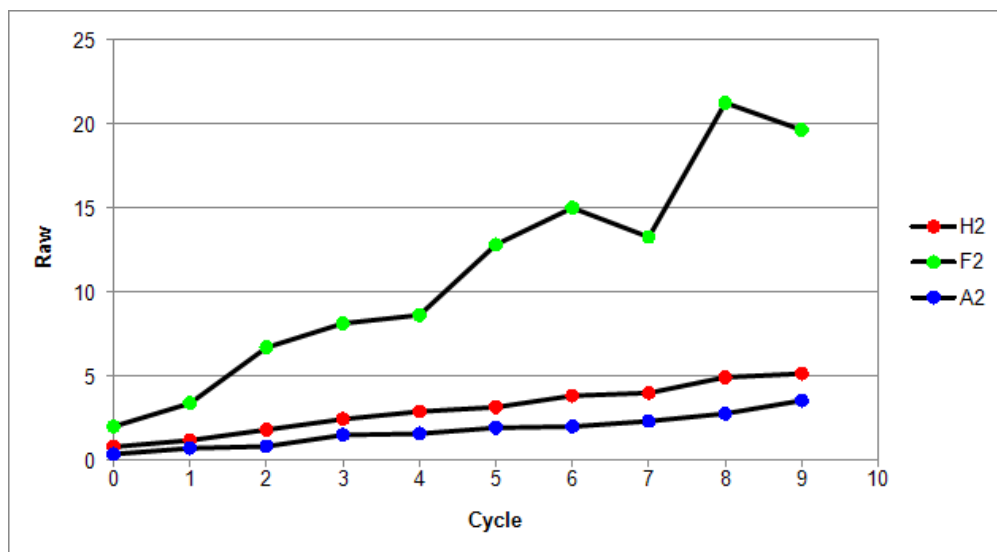
### ELISA (384-well)

Updated example measurements.

### XY Plot Report Element

Using this feature, you can include a chart for one or more XY positions in your report. The y-axis of the chart corresponds to measurement values; the x-axis represents (depending on the assay) cycle, time, or wavelength values. The data points on plots for different positions are denoted with different colours. The flagged positions or data points are not included in the chart.

For example:



This report element is specified in the XML editor, by adding the **XYPlot** child element to the **Report** element and defining it with the following syntax:

```
<XYPlot Id="Id" MatrixId="Id" Container="Number" Positions="List of positions, e.g., A1,A2,A3" Include="Boolean" SheetName="Name" XAxisTitle="Title" YAxisType="Type" YAxisTitle="Title" XAxisType="Type" Title="Title">
```

### *Empty Endpoint Data*

For endpoint data, the empty values now are denoted with the "-" hyphen symbol. This functionality is applied automatically on import, or you can mark the points as empty in MAA, in the **Pad** view of the **Measurements** tab.

### *Flagged Values Representation in Plate View*

When viewing measurements in MAA or while running New Protocol or Import wizards, data containing any flagged values (outliers) will be presented with:

- The cross through the XY thumb plots
- The strike for endpoint and field data values

### *Reporting Cosmetic Enhancements*

- **New Default Font** — The reports are now generated using the Tahoma font of 10 pt size by default.
- **Borders of a Chart** — The outer borders in chart images are no longer displayed by default. To include borders in you report charts, add **ShowBorder** Boolean attribute to the chart configuration in XML.
- **Grid Line Display** — The charts now appear with both vertical and horizontal grid lines.

Learn more about customizing charts appearance at [Change the Units and Number Format of the Charts](#) topic.

### *Select Colour Scheme for the Matrix*

In the **Matrices** tab, you can now format any matrix with a three-colour scale. Using this formatting, the data in the associated Sample Table column, Matrix Table, or both will be displayed with a gradation of the three selected colours based on the result values.

### *Sample Table Enhancements*

#### *Include or Exclude Icons*

In the Sample Table report settings, you can now select if the coloured circle icons to the left of each sample are included or excluded from the report.

### *Sample Data Processing Settings for Endpoint Matrices*

When working with endpoint assays, you can now alter the way the results are included in the Sample Table using check box options that reveal the applicable data processing settings. Report a meaningful subset of the results at a glance using:

- **Filter** – Include only the results that satisfy the filter condition applied to any sample table column. You may also use Sample Label to filter the rows with.
- **Limit** – Restrict the number of samples (rows) to display in the Sample Table.
- **Order** – Sort the data of a specific column from highest to lowest and vice versa for numerical values, or in alphabetical or reverse alphabetical order for textual content.

### *Include Standard Deviation of Raw Data in Curve Data Tables*

When using the Standard Curve Fit or the Dose–Response Curves transform, you can add **IncludeRawSD** to the Curve Data Table in XML. Using this, the table will include a column that lists standard deviation calculated for raw measurements.

### *New Report Macro*

The **{PlateID}** macro is available for use in the **Title** and **Sheet Name** properties. This macro expands to the plate ID as it appears under the **Measurements | Plate IDs**.

### *Wording Enhancements*

For Best Fit Results table, the title of the **Position** column is changed to **Rank**.

When importing data from a file with built-in Excel selection (in New Protocol or Import wizard), the metadata item **Selection** is renamed to **Measurement Cells Selection**.

Updated LANCE cAMP installed protocol's overview: now it correctly displays 615nm and 665nm channels.



The XY Reduction Peak transform is renamed to the XY Reduction Peak Point.

### *Value Bars in Sheet View*

Now any configured Value Bars appear in Sheet View.

### *Configuration of the Chart Appearance in the Report*

#### *Axes Crossing Customization for Fit Charts*

When working with endpoint curve-fitting transforms (Standard Curve Fit, General Curve Fit, and Dose–Response Curves) or configuring chart report elements (Curve Overlay, Histogram, and XY Plot), you can set where you want the x-axis to cross y-axis and vice versa with **VerticalAxisCrosses** and **HorizontalAxisCrosses** XML attributes. By default, the axes cross each other at the minimum data point value. Add and define any or both of the crossing positions inside the transform element in the XML editor.

#### *Display of Units and Numbers*

For charts generated by endpoint curve-fitting transforms, report element charts, and QC Output Levey-Jennings and CUSUM charts, you can define the major, minor units and specify number format for values of each axis through the XML editor.

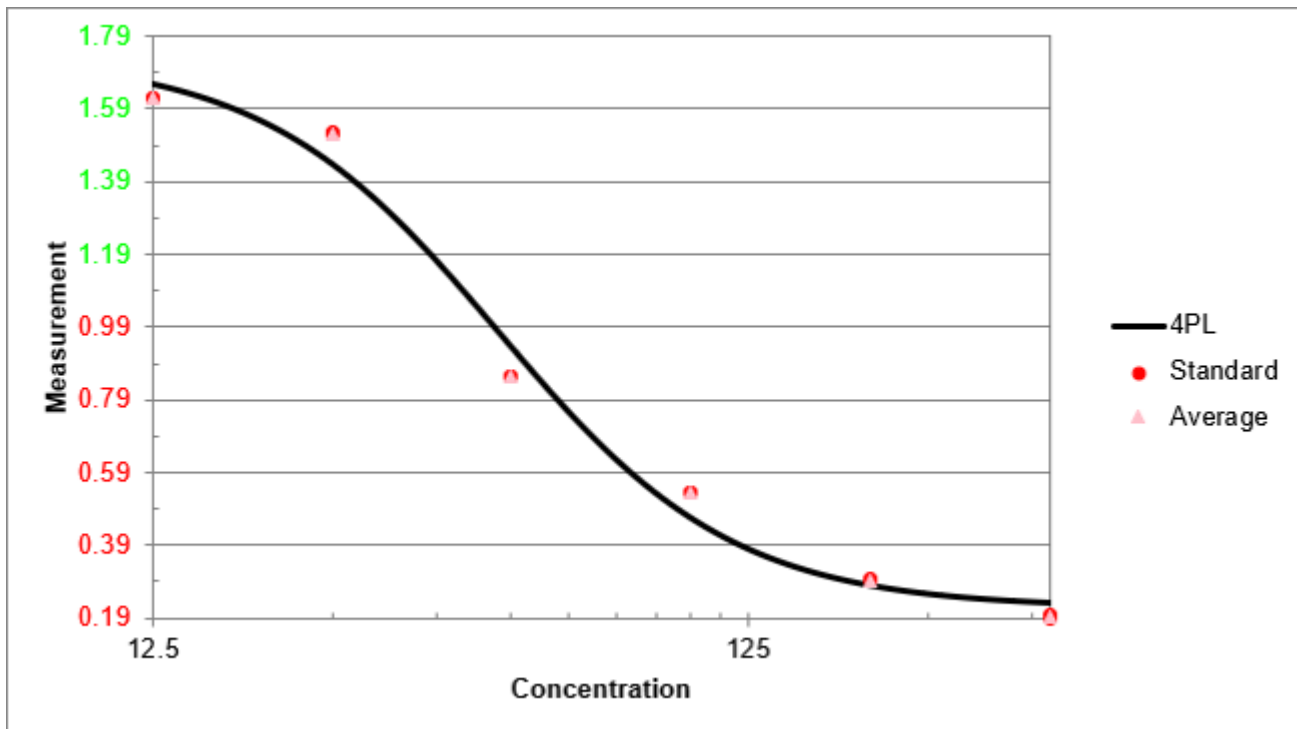
1. Depending on which chart you're customizing, locate:
  - The transform's element (such as **DoseResponseCurves**)
  - Under the **Report** element, the chart child element (such as **Histogram**)
  - When running QC Wizard, select the XML tab, and add **Chart** child element to the **Observation**
  
2. Add any needed attributes and specify their syntax:
  - **XAxisMajorUnits** and **YAxisMajorUnits** – Numeric intervals between numbers on the associated axis.

- **XAxisMinorUnits** and **YAxisMinorUnits** – Numeric interval between supplementary tickmarks on the associated axis. The minor units are not displayed unless this attribute is specified.
- **XAxisNumberFormat** and **YAxisNumberFormat** – The formatting for the major unit values of the associated axis. See Custom Format Codes for Numbers of the Chart for the available options.

For example:

```
<StandardCurveFit XAxisMajorUnits="10"
XAxisMinorUnits="5" YAxisMajorUnits="0.2"
YAxisMinorUnits="0.1" YAxisNumberFormat="[Red][&lt;1]0.00;
[Green][&gt;1]0.00" StandardType="2" FitMethod="4PL"
Concentrations="400,200,100,50,25,12.5"
XAxisTitle="Concentration" YAxisTitle="Measurement"
FitToStandard="Average" CalculateFrom="Replicates">
```

With this configuration, the fit chart of the Standard Curve Fit transform results will appear as follows:



### *Axes Values for Small Charts*

Improved the display and formatting of axes values for curve charts when selecting small or medium Chart Size report option.

## **Fixes in MyAssays Desktop Pro R4.2 (detailing changes since R3.2)**

### *Standard Curve Fit With XY Data*

With R4 a protocol with Standard Curve Fit transform and only XY measurement Data would not compute results if Calibrators table was included in report. This is now fixed.

### *LDAP Server Unavailable Prevents Saving/Exporting*

If LDAP Server connection is unavailable then MAD could not save or export results. This is now fixed.

### *XY Positions With the Same Y Values Were Not Displayed on a Chart*

Because of chart scaling issue for XY data with the same y values, the chart appeared as empty. This incorrect scaling is now fixed.

### *Unable to Display Page-Based Report for Multiple Plate Assays That Contain QC Elements and Report Template*

For multiple plate assays with QC report elements and page templates, it will be necessary to remove the page template and configure it again. To do this, open the assay, and on the **Report** ribbon tab, select **Page View**, then under **Template** group, click **Delete**. After that, click **New** and configure the template again as required. This is necessary because the naming convention of QC report elements is updated to include plate number.

### *Importing Custom Metadata from Excel Files Could Result in an Error*

While importing data from some .xlsx files with custom metadata, if the users switched between **Meta** and other tabs several times, the wizard could result in an error. This unstable behavior is now fixed.

### *Incorrect Container Title in Flags View for Rack-Based Assays*

The container column was titled **Plate** whereas it should be **Batch ID**. This wording issue is now fixed.

### *Save As Protocol Failed for Results Files with Uncalculated Changes*

When opening a results file with uncalculated changes in MAA, the calculation is performed as expected. If then the results were attempted to be saved as protocol, the error occurred, and the file was not saved. This issue is now fixed and the file is saved as expected.

### *Validation Configuration Did Not Take Selected Sample Types into Account*

When validation was configured as **Expression with Every Sample Replicate (x)** or **Expression with Every Sample Group (x)**, they were performed on all samples, irrespective of the Sample Types setting. Not this incorrect behavior is fixed.

### *Displaying Position Expressions List on Systems with Comma Decimal Separator*

On a system with comma as a decimal separator, the list of configured expressions in Position Expressions setting of the Expression by Position transform was displayed in invariant culture. Now it is displayed with local system settings.

### *Sample Types Names Were Not Validated Fully*

Previously, the sample type names were not validated fully, which could lead to errors in calculating expressions. Now a sample type name can include alphabetical characters (uppercase and lowercase), numbers (0-9, but not as the only symbols), underscore, and space (but not as the only, the first or the last symbol). Also, the sample types cannot be named after any function (for example, **if**, **auc**, **mean**, etc).

### *Curve Overlay with Standard Curve Fit (from Library) Transform Reference*

Previously, when referencing curve as the number of Standard Curve Fit (from Library) that uses relevant Library Curve File, this could cause error in report generation. Now this issue is fixed.

### *Protocol Name Validation in New Protocol Wizard*

Extended validation for New Protocol Wizard to improve the overall coverage of new protocol creation. Whereas in previous versions the invalid characters could lead to unexpected results, now the users are either warned against their usage, or the characters are replaced with hyphens.

### *Expressions with $\geq$ Operator on Systems with Comma Decimal Separator Were Evaluated Incorrectly*

If local settings of a system used comma decimal separator, the expressions with the  $\geq$  operator could be evaluated incorrectly. This issue is now fixed.

### *XY Thumb Plots in Matrix Table Did Not Appear Correctly*

XY position thumb plots were not displayed correctly in the Matrix Table as against the Sample Table. Now the thumb plots appearance is fixed.

### *Matching Element IDs Validation*

In previous versions, not all report elements were validated against using the same ID more than once, which could lead to unexpected results. Now the validation is enabled on all report elements with an appropriate message warning against such duplications.

### *Chart Computation for Extremely Small Values*

If data set contained extremely small numerical values, these values were displayed on the chart with a glitch. Now support for such values is extended, and the chart computes a smooth line.

### *Value Cannot Be Null Exception when Opening Results*

If opening a corrupted .assay-results file, the file was launched with a Microsoft .NET Framework unhandled exception. Now an appropriate error message appears.

### *QC Add-On Fixes*

- Improved error handling when filling in the text. This way, if any field is blank or there's any incorrect data entered, the appropriate notifications will appear.
- Previously, the QC results were reported on the first sheet even if the Sheet Name was specified. This incorrect behavior is now fixed.

### *No Export Occurred for Results with Custom Export Location Specified*

If an assay protocol was saved with custom destination folder for export, and that target path was inaccessible, no export occurred (for example, if launching a file shared by another user). Now the export destination defaults to MyAssays\Reports folder under Assay Data Folder Root.

### *Calculation Error If No Sample Types Were Selected for Histogram*

If adding a Histogram element to the report with **(None)** sample types setting, the calculation crashed. This issue is fixed, and in such cases the Histogram element is not included in the report.

### *Element IDs Expanded Incorrectly in the Report Template*

In rare cases, if the element ID contained the ID of another (for example, **{Copy of Raw Data}** and **{Raw Data}**), the former expanded incorrectly in the report template. This behavior is now fixed.

### *Chart Displayed Negative Values with Logarithmic Y-Axis Incorrectly*

If there were negative values used in the fit on a logarithmic y-axis, the charts could display plotted data incorrectly which also affected Page View of the calculated results. Now when using a logarithmic y-axis, negative (or zero) y values are not included in the plot.

### *Unexpected Behavior when Creating New Protocol for File with Custom Data Dimensions*

In some cases, when a new protocol was created for data from a file with custom (i.e., not common) matrix dimensions, the process failed. Now, when importing measurements from such file, the wizard directs you to the step for selecting the dimensions of the matrix.

### *Not All Sample Types Were Included when Default (All) Option Was Selected*

When configuring validation, or adding a sample table or histogram to the report, the default setting is to include all sample types. If the user added new sample types to the assay after adding one of those options, the new sample types weren't automatically included in the default **(All)** option. This incorrect behavior is now fixed.

### *TOVs References Expanded Incorrectly for Large Layouts Dimensions*

If the layout featured positions that matched one of the TOVs, the TOVs ( $R^2$  in particular) could be expanded to these layout positions when evaluating expressions. This issue is now fixed, so if you have encountered this on the previous versions, please perform data analysis again to obtain accurate results.

### *Incorrect Dynamic Sequence for Rack Assays*

If the rack layout featured several dynamic sample groups, they could be expanded incorrectly. For example, if the dynamic sample contained two replicates, they were expanded as 1,2 | 2,3 | 3,4. This incorrect behavior is now fixed, so, in this case, they expand correctly as 1,2 | 3,4 | 5,6.

### *Occasionally Unable to Display the Excel Report Preview in MADE*

If selecting to preview the XLS or XLSX reports on the Reports pane of MADE, they could not be displayed in some cases. This limitation is now fixed.

### *MyAssays Analysis Launcher Error when Clicking Launch*

This error occurred when clicking launch with no protocol specified. This is fixed by disabling **Launch** button if no protocol is specified.

### *Calculate Message Persisted after Calculations Were Performed*

On launching and changing assay protocol or results file, after the user had opened and then closed Layout Editor, and then clicked **Calculate** to calculate new results, the message advising to click **Calculate** was still displayed. Now this is fixed.

### *Deleting Layout File Caused Error in Displaying Associated Version*

If the layout was changed each time results were calculated and the associated assay-layout file was deleted, the previous version could not be displayed when selected. This incorrect behavior is now fixed.

### *Couldn't Produce Report for Standard Curve Fit with Auto Smoothed Spline*

Report content for Standard Curve Fit transform was incorrectly generated for this fit method. This issue is now fixed.

### *Importing Dilution Factors in ELISA Could Result in an Error*

When importing dilution factors from a file, the columns that listed Unknowns expanded incorrectly and caused an error. Now this issue is fixed.

### *Custom Export Failed If Export Folder Did Not Exist*

When specifying a non-existing folder as an export destination, the export failed. Now the Export wizard creates a folder in a specified destination path.

### *Search MyAssays.com Did Not Work If the Assay Data Folder Root Was Changed*

If user changed their data root folder, it could lead to errors when searching predefined protocols from MyAssays knowledge base. This issue is now fixed.

### *Transforms Content Included Incorrectly*

In some cases, transform-specific report content could be included in the report even if the **Include** check box was not selected. This issue is now fixed.

### *The Logo File Does Not Exist at the Pointed Location Exception*

In rare cases, if a protocol should have contained a logo but no logo was found, the file was launched with a Microsoft .NET Framework unhandled exception. Now it launches correctly and, if such case occurs, the error is added to the error log.

### *Victor Nivo Kinetic Data Is Plotted on Chart with X Axis Title Reading "Cycle" It Should Read "Time"*

Now the axis titles are imported and plotted correctly.



## Updates in MyAssays Desktop Pro R3.2 (detailing changes since R3)

### *Improved Support for Kaleido 2.0*

Various enhancements to improve working with Kaleido 2.0. Please also ensure latest Folder Poll release is used (available from <https://www.myassays.com/folder-poll>)

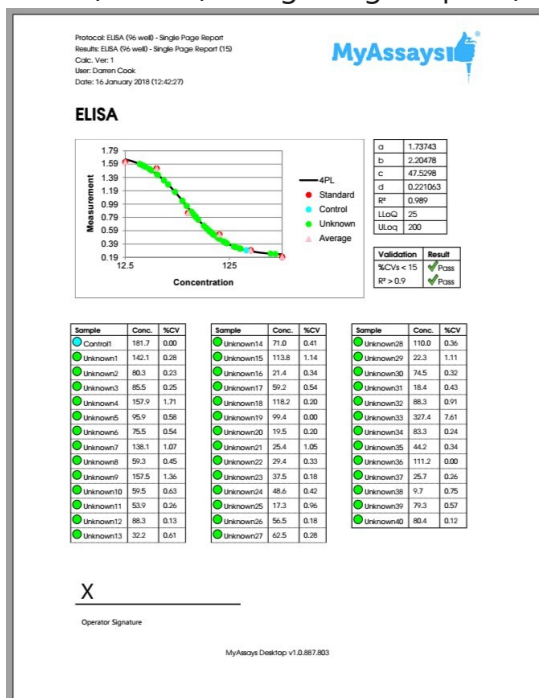
### *Support for Larger Rack Layouts*

R3 was limited to rack layouts up to 26 racks. This limit has been increased.

# Updates in MyAssays Desktop Pro R3 (detailing changes since R2)

## New Installed Protocols

- 4PL (Constrained by B0 and NSB) Quantification
- 4PL Quantification
- Alpha 384-well Screening
- ATP Lite
- Best-Fit Quantification
- DNA 260nm
- DNA Quantification
- Dose-Response Curves for EC50
- ELISA
- ELISA (96 well) - Single Page Report (Click **Page View**)



- LANCE cAMP

- Linearized (Logit-Log) Quantification
- Z-Factor

### *Video Links in Protocols*

- Dose-Response Curves for EC50 (96 well)
- Multiplex

### *Excel Viewer in MADE*

The XLSX viewer works on the **Reports** and **Measurements** folder in MAD Explorer. The Reports folder is the default location of reports exported from MAD, so you can easily view MyAssays Desktop's Excel output there. The Measurements folder is not displayed by default, it can be enabled from **File | View | Show Measurements Folder**.

With this view enabled, you can copy or store XLSX files in here so that you can view them without Excel. Also, you can select cells and right-click to copy and then paste to other applications.

### *Rack Layout Editor*

For rack-based assays and RIA. See:

- <https://www.myassays.com/myassays-desktop-introducing-the-rack-layout-editor.video>
- <https://www.myassays.com/create-a-quantitative-radioimmunoassay-with-myassays-desktop-pro.video>

### *Transform: Standard Curve Fit (from Library)*

Walk-through at <https://www.myassays.com/re-use-standards-curve-with-a-library-curve-fit.video>

### *Dose-Response Curves*

See <https://www.myassays.com/dose-response-curves-for-ec50-with-myassays-desktop.video>

### Series Mode Advice

Calibrator	Conc.	Units:
Standard1	400	ng/mL
Standard2	200	
Standard3	100	
Standard4	50	
Standard5	25	
Standard6	12.5	

Series

x ÷

2

Paste

**Series mode is on.** In this mode, the concentration value of the first calibrator can be specified; the remaining values are computed in accordance with the series settings. To freely edit all concentration values exit **Series** mode.

### Standard Curve Fit | Custom Fit

Fit your data to your own custom fit equation. Reference results of previous fits. For example, with parallel line analysis, fit an initial unrestrained fit and then fit other curves where curve coefficients are constrained.

Example custom fit equations:

$$4PL: d + ((a-d)/(1+(x/c)^b))$$

$$4PL \text{ with additional R coefficient: } d + ((a-d)/(1+(r*x/c)^b))$$

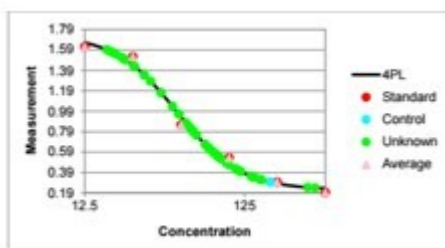
Computes 4PL using coefficients generated from transform 1 and calculates C value:

$$tov1.d + ((tov1.a - tov1.d)/(1+(x/c)^{tov1.b}))$$

Computes 4PL using coefficients generated from transform 1 and calculates C value R:

$$tov1.d + ((tov1.a - tov1.d)/(1+(r*x/tov1.c)^{tov1.b}))$$

### Standard Curve Fit | Show Points on Curve Option



### *Additional Goodness Measures*

- Degrees of Freedom
- -AIC
- -AICc
- -BIC
- DWS

### *New Best Fit Score Methods*

- -AIC
- -AICc
- -BIC

### *Probability Functions*

- f.dist
- f.inv

### *Overview Editor*

Right-click overview text in protocol to edit the overview text and description.

### *Curve Overlay Feature*

Displays multiple curves overlaid on a single chart.

### *Chart Size Report Option*

Now you can select how to report chart from the transforms content: small, medium and large.

### *Nivo 2.0.2 Support*

### *Luminex 2.1 Support*

### *Text Report Element with Macros*

Include custom text elements in your report and reference macros, including metadata, protocol and results information, data and version numbers.

### *Validation Report Element Updates*

### *Sample Table Sort Order*

Sort Sample Table via a custom column (e.g., arrange results by concentration from highest to lowest) with **OrderByColumn** and **OrderBySequence** settings.

### *Evaluation Variables*

Name evaluation variables for referencing them in other settings.

### *XY Output options*

Configure appearance of XY data in report. This can be used to display kinetic or spectral data as a graphic or table of values in different formats.



### *Multiplex Page Report Template*

Multiplex page report template now defined by single analyte and applied to all analytes (each analyte on a new page).

### *Help Page and User's Guide Updates*

Comprehensive updates to Help Page and User Guide. Including new Curve Fitting section covering tips on fit selection and advanced configuration.

# Updates in MyAssays Desktop Pro R2 (detailing changes since R1)

## *Help Pages and Manual Integration*

Help Pages and Manual Integration are available in MADE (from **Support** ribbon tab).

Help Page can be launched from help icon in MyAssays Analysis (on the right of the ribbon).

## *Video Updates (available from Welcome Screen)*

- Quick Start
- Flagging Outliers

## *VICTOR Nivo XLSX Import*

Automatic importing of VICTOR Nivo XLSX data.

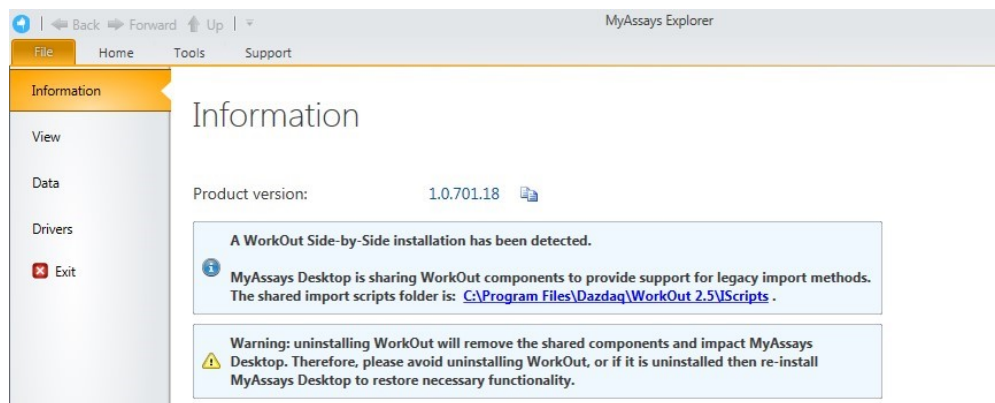
Kinetic Spectral data is imported with each wavelength as a separate matrix.

(Scan mode import is not supported)

## *Support for Installing MAD Alongside WorkOut*

Improved support for installing MAD on a system with WorkOut installed:

- WorkOut will continue to operate if MyAssays Desktop is installed.
- If WorkOut is using any custom import scripts, then these will be available to MyAssays Desktop.
- After uninstalling MyAssays Desktop, WorkOut will continue to operate.
- The integration works with Kaleido 2.0 update.
- If MyAssays Desktop detects WorkOut, then information about the side-by-side configuration is displayed in MADE **File | Information** area with information and warning notices (to advise against uninstalling WorkOut in this scenario), e.g.:



- If WorkOut is uninstalled after MAD is installed, then user is advised to update/repair MAD installation (when one of the dependent import features is attempted).

### *Histogram Report Element*

Add histograms to the report. Select any endpoint matrix and which types to include. Optionally include error bars.

### *Best Fit UI*

Select which fit methods to use within the editor in the transform's settings.

### *Updated ELISA Installed Protocols*

Example 96 and 384 well example protocols.

### *New Transforms*

- XY Baseline Correction
- XY Reduction X Between Y

### *Multiple Plate Layout Editor Tip*

This advises how to number the sample groups when working with multiple plate layouts.

### *Chart Plot Area Fill Colour*

Now white (was grey).



### *Standard Charts Error Bars*

Currently only available as XML setting option in **StandardCurveFit** element.

### *Update Standard License*

For Standard/Basic licenses, upgrade links are provided to online content for upgrades.

### *Matrix Position Reference*

Use # syntax in expressions to refer to the associated position on a matrix. (See User's Guide for more details.)

### *XLS/XLSX Source*

When importing XLSX/XLS content, **Source** tab is available to show content.

### *Label Enhancements*

Highlight whole row. Apply to selected types only.

### *Export Wizard*

Supports custom export plug-in DLL.

## **Enhancements since v1.0.641.3**

### *Multiplex Protocol Update*

Terminology change: Plate Dilution Factor and Sample Dilution Factors.

### *Multiplex Concentrations Editor Enhancements*

This includes:

- Specification of different units per analytes
- Matching Units option
- Non-serial or serial concentration values

### *Import Method Additions*

Automatically imports analyte names from supported files.

- Support for Luminex xPonent CSV multiplex
- Support for MSD CSV and TXT multiplex files

### *Sample Labels*

Easy-to-use sample labels editor including colour pickers for text highlight and text colour.

### *Best Fit*

Now defaults to 4PL and 5PL fit methods weighted and unweighted.

### *Best Fit Score Method Options*

Presets available for various common scoring methods.

### *Support for Large Text Sizes*

With support for large text sizes as commonly used with larger screen resolutions (e.g., 3000x2000 displays).

### *SheetName option per TransformContent Element*

This allows transform content elements to appear on different sheets (e.g., Fit Chart and Best Fit table can now appear on separate sheets).

### *Export Plug-In Option*

Export Wizard includes option to select Export Plug-In Option to use for output.

### *Infinite Weight*

When using a zero standard in the fit, e.g., so the calibrator is (0,0), if using a weight method such as  $1/y^2$ , then this will result in an infinite weight that can skew the fit. When this occurs, a warning message appears.

Also, this can be resolved using advanced XML setting for Standard Curve Fit to replace any infinite weight with the maximum finite weight in the set optionally multiplied by a factor, e.g.:

`WeightInfinityResolution="MaxFiniteMultipliedByFactor"`

`WeightInfinityReplacementFiniteMaxFactor="2"`

## Enhancements since v1.0.621.602

### *Feature Licensing*

Multiplex feature now requires a specific license type. If you do not have a multiplex license contact support for an updated license.

### *Cached Tab Selection*

Switching between the main tabs in the Analysis window is now even faster.

### *Flags View*

View flagged items from Flags view option (available after any point or position is flagged).

### *Units Specification*

Currently via XML only.

### *Transform Output Variables*

For referring to transform calculations and evaluations in expressions.

## Enhancements since v1.0.593.182

### *Layout Editor Update*

The Layout Editor has been replaced with a faster implementation that no longer requires Silverlight.

### *Best Fit Feature*

The Standard Curve Fit transform now offers the Best Fit fit method. You also can select a Scoring Method to use to sort fit results and pick the best.

### *Support for Comma Decimal Separator Systems*

The application now works with the system's current culture settings. Any numerical values (including data and parameters) should be specified using the system's culture settings. For example, "1,23" on a typical European configuration is equivalent to "1.23" on a US-based system.

### *Faster Tab Selection*

Switching between the main tabs in the Analysis window is now faster.

### *Integrated Transform Help*

In the configured transforms list, a help icon is now available to open the help page associated with the transform.

# Known Issues in R10

## **Numerical Formatting of imported WIZARD2 data does not appear to match WIZARD2 data.**

The default numerical formatting setting used to display imported WIZARD2 data is 6 significant figures. With this setting it might appear that the displayed data does not match the WIZARD2 data collected data. In fact, MAD imports the full precision of data and always uses the full precision of values for its calculations, the numerical formatting is only applied for display/reporting purposes. The numerical formatting method and precision used in the report can be changed from Assay Properties | Matrices (select each matrix to edit). Also, with R8 we added a new numerical formatting option to show All Significant Digits of Precision. It is suggested to use Decimal Places with 0 precision for Counts/CPM/DPM and 2 for Error %

## **MAD inactivity window can pop on top of WizUI even if MAD is not the active window**

With ES enabled, the MAD inactivity window appears if MAD is left idle for the defined period. When working with WIZARD2, the inactivity prompt can appear on top of the WizUI. User must log onto MAD in order to close this window

## **MAD ES AutoLogon can import Wizard data without authentication but generating a report requires a logon**

This is the expected behaviour. MAD Analysis is an interactive process which requires a logon (to associate any activity performed on results/protocol with an authenticated user).

## **"Internal security error occurred. Please close and restart all MyAssays applications." message can occur with ES login window**

This occurs if the ES login window is minimized and then the Goto MAD button on WizUI is clicked. To avoid this, do not minimize the logon window. (If the error occurs then it can be dismissed.)

## **Using the ES Resume login dialog can return to the MAD Explorer window even if the MAD Analysis window was last used**

Click on the correct MAD window to continue.

## **MAD fails to install Enhanced Security services if .NET 4.7.2 is not already installed prior to installation**

MAD security cannot be enabled in this state, when attempt to complete the Security Configuration Wizard, a message such as "Failed to apply changes: Unable to stop authentication service. Try doing it manually or contact support" will appear. To resolve this, uninstall MAD, install .NET 4.7.2 and then re-install MAD.

## **Domain changes not immediately reflected**

With ES, when using domain authentication context, when a domain user account is removed from the domain controller, the change is not immediately forwarded to the workstation. In cases where a user tries to edit a deleted account, the Security Management tool will display a generic error: *User with a given ID does not exist*. Therefore, if removing domain accounts, it is recommended to log out and log back into Windows before configuring or editing users with MAD's Security Management tool.

## **Domain Users marked as disabled in Security Management tool**

On launching Security management tool, domain users appear in red italics. This can occur if Security Management was used in R8 and it failed to load successfully, and then when using newer releases. In that case all domain users are marked as disabled. To resolve this issue, press Refresh and then press OK.

## **On completion of the Enhanced Security Wizard, Warning Message Appears**

On completion of the Enhanced Security Configuration Wizard, warning message in red appears: **Failed to apply changes. Unable to backup current security configuration. Please make sure the configuration files or folders are not locked and try again.**

This can occur when attempting to make changes to an Enhanced Security configuration with a local administrator account that is different to the local administrator account that was used to originally enable ES. To resolve this, log on to Windows with the local administrator that originally enabled ES and repeat the process.

## **With Enhanced Security: Session Connection Lost | Connection to the service was lost. Please log in again...**

The MyAssays Desktop Enhanced Security Sync Service, is used to synchronise user sessions and handle automatic time-out enforcement. This is implemented using inter-

process communication. If this process is impacted due to system hibernation, network connectivity interruption or other reasons, MyAssays Desktop will end the current Enhanced Security session and display a message box advising: **Connection to the service was lost. Please log in again...**

This action is taken to ensure that any existing session is terminated (to avoid any data security issue). Windows will normally automatically restart the Sync Service after a short delay. Therefore, if this occurs launch MyAssays Desktop and log in again to resume the session. If you continue to see this message then wait for 1 minute and then 5 minutes before retrying (these are the intervals Windows uses to restart the service).

If the message: **Security management could not be initialized. Please contact support for assistance.** appears then this is because Windows was not able to restart the service automatically or did not attempt to. In this case, the service can be restarted manually, either by restarting the system or by following these steps with an administrator account:

1. From **Start | Run** type **services.msc**
2. Locate **MyAssays.Security.SyncService** and identify its status. If it is not marked as **Running** then double-click on the item and press **Start**.
3. Launch MyAssays Desktop

Further information about why the SyncService was stopped can be found in Event Viewer (**eventvwr**) under **Windows Logs | Application** (use **Find** option to search for **MyAssays.Security.SyncService.exe** )

## **System Hibernation or Network Connectivity Interruption During an Enhanced Security Log-In Session Will End Session**

Please refer to section [above](#).

## **Critical Error in MAA Due to High Memory Consumption**

In some cases, when a large number of MAA windows run at the same time, the application could throw Critical Error exception due to high runtime memory consumption. This issue is now partly fixed and in the process of further fixing.

For now, please avoid calculating too many results versions during single MAA run, i.e., restart the application every 10-20 calculations if possible.

## **Dose–Response Curves for EC50 Changing Dose Replicates Does Not Update the Doses Setting**

When working with Dose–Response Curves for EC50, changing the **Dose Replicates** in the **Doses** tab might not visually update the **Doses** drop-down display of Dose–Response Curves transform and vice versa. This occurs only if new value is a divisor of the previously selected value. This is just a visual desynchronization and does not affect calculations at all.

### Keyboard Occasionally Loses Control Focus When Editing Certain Property Values

To resolve this, press **Esc** key to continue with keyboard entry.

### Best Fit Search Is Not Valid. Fit Method Could Not Be Detected.

This message occurs if a protocol was created with a version before the Best Fit feature was added but is then changed to use the Best Fit method. To resolve this, the easiest solution is to select a different fit method or recreate your protocol with the new installation to use the Best Fit feature.

Alternatively, insert the following XML snippet under the **StandardCurveFit** element in the XML editor.

```
<BestFitSearch xmlns="http://www.myassays.com/bestfitsearch"
WeightCSV="None,1/y2,1/x2,x2,y2" ScoreMethod="R2">
  <Method FactoryName="4PL" DisplayName="4PL" />
  <Method FactoryName="5PL" DisplayName="5PL"/>
</BestFitSearch>
```