

## MyAssays Desktop Pro R2

### Overview

This document contains the release notes for **MyAssays Desktop Pro**, providing the latest information about the specified version, including:

- Download and Installation Instructions
- How to Contact Support/Provide Feedback
- System Requirements
- Sources of Further Information
- Summary of Changes
- Known Issues

### Version

R2 v1.0.735.704

### Download Links

#### Installation

<https://myassaysfiles.blob.core.windows.net:443/release/mad/r2/MyAssays-Desktop-Setup-v1.0.735.704.msi>

#### User's Guide

<https://myassaysfiles.blob.core.windows.net:443/release/mad/r2/MyAssays-Desktop-Users-Guide-v1.0.735.704.pdf>

### Support

For technical support please email [support@myassays.com](mailto:support@myassays.com).

### Feedback

Please provide any feedback, suggestions or feature requests to [support@myassays.com](mailto:support@myassays.com).

Aug 3<sup>rd</sup> 2017



## System Requirements

### Supported Operating Systems

- Windows 7 (32-bit and 64-bit)
- Windows 8.x (32-bit and 64-bit)
- Windows 10 (32-bit and 64-bit)

### Software Requirements

Microsoft .NET 4 (full) or later must be installed (this is pre-installed on Windows 10 systems). For earlier versions of Windows, if it is not already installed on your system or you are not sure, please visit: <http://www.microsoft.com/en-gb/download/details.aspx?id=17851>.

## Notes if Upgrading from a Pre-Release Version

If you have used or installed a pre-release version of the software, please uninstall that version before continuing. Your data and files will remain after uninstall and will be available after installing the newer version.

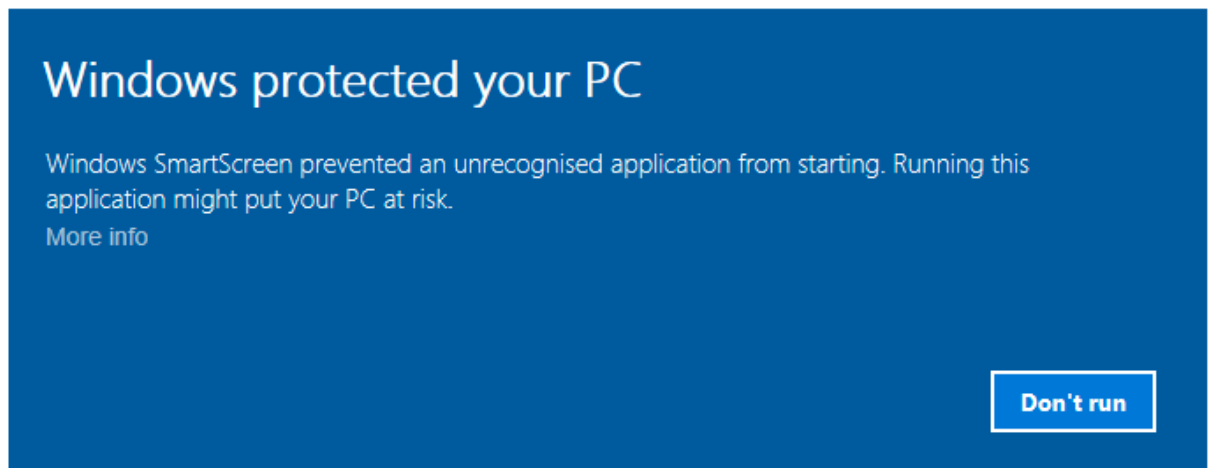
To ensure the pre-configured protocols are updated, it is necessary to delete the MyAssays\Protocols folder (typically under your **Documents** folder). This will ensure that the content is recreated with the updated pre-configured protocols when the application is started.

If you have created your own protocols with a pre-release version that you plan to use after the upgrade it is recommended that you move them to another location before deleting the MyAssays\Protocols folder. (They can be moved back after the updated content has been created).

## Installation

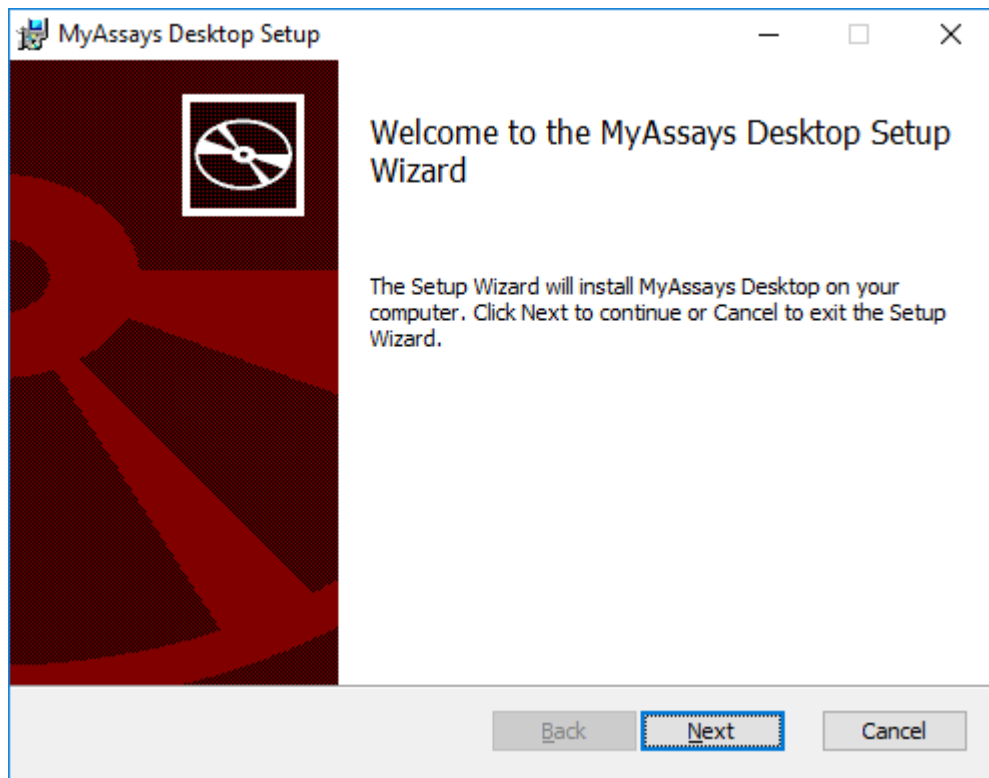
The installation process must be performed using a Windows account with administrator privileges.

1. Download and launch the MSI file. If prompted:



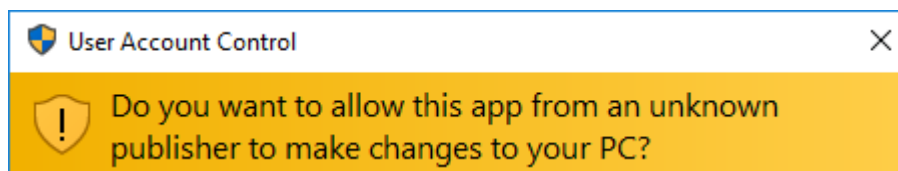
Press **More info** and select **Run anyway**

2. Follow the steps through the wizard:



Providing the requested information.

3. If prompted:

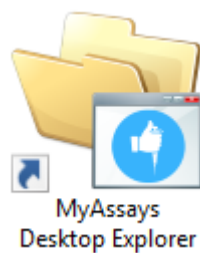


Allow installation by pressing **Yes**.

4. On completion, optionally tick to **Launch MyAssays Explorer** and then press **Finish**.

## Launch

After installation, the **MyAssays Explorer** icon will appear on the desktop:



Use this to start the application.

Aug 3<sup>rd</sup> 2017



## Licensing

A license is required to use the application. The first time the application is launched, the **License Activation Wizard** will be launched. Use this wizard to provide your product serial code and email address.

## Uninstall

The software installations can be uninstalled using the standard Windows uninstall function (from Control Panel | Uninstall a Program).

## **Further Information**

The following online video resources provide various walkthroughs of the software.

### *Getting Started*

<https://www.myassays.com/myassays-desktop-quick-start.video>

<https://www.myassays.com/myassays-desktop-fundamentals.video>

<https://www.myassays.com/download-and-use-protocols-from-myassays.video>

<https://www.myassays.com/myassays-desktop-flagging-outliers.video>

### *Importing Data*

<https://www.myassays.com/import-measurement-data-from-excel-files-with-myassays-desktop.video>

<https://www.myassays.com/import-measurement-data-from-multiple-excel-files-with-myassays-desktop.video>

### *ELISA*

<https://www.myassays.com/elisa-data-analysis-with-myassays-desktop.video>

<https://www.myassays.com/multiple-plate-elisa-with-myassays-desktop.video>

### *Worklists*

<https://www.myassays.com/myassays-desktop-sample-ids-and-worklists.video>

### *Export*

<https://www.myassays.com/myassays-desktop-custom-export-for-lims.video>

### *Multiplex*

<https://www.myassays.com/myassays-desktop-automatic-launching-of-multiplex-analysis.video>

<https://www.myassays.com/myassays-desktop-introducing-the-multiplex-protocol.video>

### *Folder Poll*

<https://www.myassays.com/folder-poll-with-myassays-desktop.video>

We will be adding more videos in due course.

## What's New?

This section describes key enhancements since previous versions:

### Enhancements Since R1

#### *Help Pages and Manual Integration*

Help Pages and Manual Integration are available in MADE (from **Support** ribbon tab)

Help Page can be launched from help icon in MAA (on right of ribbon)

#### *Video Updates (available from Welcome Screen)*

- Quick Start
- Flagging Outliers

#### *VICTOR Nivo XLSX Import*

Automatic importing of VICTOR Nivo XLSX data.

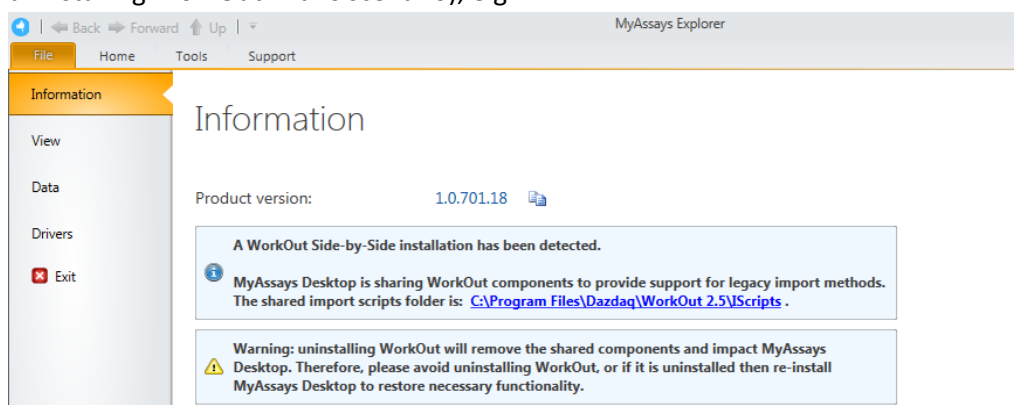
Kinetic Spectral data is imported with each wavelength as a separate matrix.

(Scan mode import is not supported)

#### *Support for installing MAD alongside WorkOut*

Improved support for installing MAD on a system with WorkOut installed:

- WorkOut will continue to operate if MAD is installed
- If WorkOut is using any custom import scripts then these will be available to MAD
- After uninstalling MAD, WorkOut will continue to operate
- The integration works with Kaleido 2.0 update
- If MAD detects WorkOut then information about the side-by-side configuration is displayed in MADE File | Information area with information and warning notices (to advise against uninstalling WorkOut in this scenario), e.g.



- If WorkOut is uninstalled after MAD is installed then user is advised to update/repair MAD installation (when dependent import features is attempted)

#### *Histogram Report Element*

Add histograms to the report. Select any endpoint matrix and which types to include. Optionally include error bars.

### ***Best Fit UI***

Select which fit methods to use

### ***Updated ELISA example protocols***

Example 96 and 384 well example protocols

### ***XY Baseline Correction Transform***

### ***XY Reduction X Between Y transform***

### ***Multiple Plate Layout Editor Tip***

### ***Chart Plot Area Fill Colour***

Now white (was grey)

### ***Standard Charts Error Bars***

Currently only available as XML setting option in StandardCurveFit element, use:

### ***Update Standard License***

For Standard/Basic licenses upgrade links are provided to online content for upgrades.

### ***Matrix Position Reference***

Use # syntax in expressions to refer to the associated position on a matrix (see help for more details)

### ***XLS/XLSX Source***

When importing XLSX/XLS content Source tab is available to show content.

### ***Label Enhancements***

Apply labelling highlight to whole row. Apply labelling to selected types only.

### ***Export Wizard***

Supports custom export plugin DLL.

### ***Enhancements Since v1.0.641.3***

### ***Multiplex Protocol Update***

Terminology change Plate Dilution Factor and Sample Dilution Factors.

### ***Multiplex Concentrations Editor Enhancements***

Including:

- Specification of different units per analytes
- Matching Units option
- Non-serial or serial concentration values

### ***Import Method Additions***

Automatic import of analyte names from supported files.

- Support for Luminex xPonent CSV multiplex
- Support for MSD CSV and TXT multiplex files



### ***Sample Labelling***

Easy-to-use sample labelling editor including colour pickers for text highlight and text colour.

### ***Best Fit***

Now defaults to 4PL and 5PL fit methods weighted and unweighted.

### ***Best Fit Score Method Options***

Presets available for various common scoring methods

### ***Support for Large Text Sizes***

With support for large text sizes as commonly used with larger screen resolutions (e.g. 3000x2000 displays)

### ***SheetName option per TransformContent Element***

This allows transform content elements to appear on different sheets (e.g. Fit Chart and Best Fit table can now appear on separate sheets)

### ***Export Plug-In Option***

Export Wizard includes option to select Export Plug-In Option to use for output.

### ***Infinite Weight***

When using a zero standard in the fit, e.g. so the calibrator is (0,0), if using a weight method such as  $1/y^2$  then this will result in an infinite weight that can skew the fit. When this occurs a warning message appears.

Also, this can be resolved using advanced XML setting for Standard Curve Fit to replace any infinite weight with the maximum finite weight in the set optionally multiplied by a factor, e.g.

```
WeightInfinityResolution="MaxFiniteMultipliedByFactor"  
WeightInfinityReplacementFiniteMaxFactor="2"
```

### **Enhancements Since v1.0.621.602**

#### ***Feature Licensing***

Multiplex feature now requires a specific license type. If you do not have a multiplex license contact support for an updated license.

#### ***Cached Tab Selection***

Switching between the main tabs in the Analysis window is now even faster.

#### ***Flags View***

View flagged items from Flags view option (available after any point or position is flagged)

#### ***Units Specification***

Currently via XML only

#### ***Transform Output Variables***

For referring to transform calculations and evaluations in expressions.

Aug 3<sup>rd</sup> 2017



## **Enhancements Since v1.0.593.182**

### ***Layout Editor Update***

The Layout Editor has been replaced with a faster implementation that no longer requires Silverlight.

### ***Best Fit Feature***

The Standard Curve Fit transform now offers the Best-Fit fit method. When selected, a Scoring Method can be selected to use to sort fit results and pick the best.

### ***Support for Comma Decimal Separator Systems***

The application now works with the system's current culture settings. Any numerical values (including data and parameter) should be specified using the systems culture settings. E.g. "1,23" on a typical European configuration is equivalent to "1.23" on a US-based system.

### ***Faster Tab Selection***

Switching between the main tabs in the Analysis window is now faster.

### ***Integrated Transform Help***

In the configured transforms list a help icon is now available to open the help page associated with the transform.

## Known Issues

### Victor Nivo kinetic data is plotted on chart with X Axis title reading "Cycle" it should read "Time"

Plotted values are actually time points.

### Out of Memory Error with Multiple Recalculations with Best Fit and Multiplex

When analysing a multiplex assay with a high number of analytes and the "Best Fit" fit method, after several recalculations an Out of Memory error may occur. As a current workaround, avoid repeated recalculations with large data sets like this when using Best Fit. (A fix will be provided shortly.)

### Keyboard Occasionally Loses Control Focus When Editing Certain Property Values

To resolve this press Esc key to continue with keyboard entry.

### Value Bars do not appear in Sheet View

Currently any configured Value Bars do not appear in Sheet View. They do appear in Page View and in Excel exports.

### Best Fit Search is not valid. Fit method could not be detected.

This message will occur if a protocol was created with a version before the Best Fit feature was added (a pre-release version) but is then changed to use the Best Fit method. (This currently includes the pre-installed Multiplex protocol) To resolve this, the easiest solution is to select a different fit method or recreate your protocol with the new installation to use the Best Fit feature.

Alternatively, insert the following XML snippet under the StandardCurveFit element in the XML tab.

```
<?xml version="1.0" encoding="utf-8" ?>
<BestFitSearch xmlns="http://www.myassays.com/bestfitsearch"
WeightCSV="None,1/y2,1/x2,x2,y2" ScoreMethod="R2">
  <Method DisplayName="4PL" FactoryName="4PL"/>
  <Method DisplayName="5PL" FactoryName="5PL"/>
</BestFitSearch>
```