

MyAssays Desktop Pro R3.2

Overview

This document contains the release notes for **MyAssays Desktop Pro**, providing the latest information about the specified version, including:

- Download and Installation Instructions
- How to Contact Support/Provide Feedback
- System Requirements
- Sources of Further Information
- Summary of Changes
- Known Issues

Version

R3.2 1.0.995.570

Enhanced Security Version

This version does not include Enhanced Security functionality, if you require the Enhanced Security version (for 21CFR11/GxP features) please contact support@myassays.com for more details.

Download Links

Installation

<https://myassaysfiles.blob.core.windows.net:443/release/mad/r3.2/MyAssays-Desktop-Setup-v1.0.995.570.msi>

User's Guide

<https://myassaysfiles.blob.core.windows.net:443/release/mad/r3.2/MyAssays-Desktop-Users-Guide-v1.0.995.570.pdf>

Support

For technical support please email support@myassays.com.

Feedback

Please provide any feedback, suggestions or feature requests to support@myassays.com.

Apr 16th 2018



System Requirements

Supported Operating Systems

- Windows 7 (32-bit and 64-bit)
- Windows 8.x (32-bit and 64-bit)
- Windows 10 (32-bit and 64-bit)

Software Requirements

Microsoft .NET 4 (full) or later must be installed (this is pre-installed on Windows 10 systems). For earlier versions of Windows, if it is not already installed on your system or you are not sure, please visit: <http://www.microsoft.com/en-gb/download/details.aspx?id=17851>.

Upgrading from an Earlier Version

If an earlier version of MyAssays Desktop is already installed on your system then the installation process will update the installation. (In this case it is not necessary to uninstall the earlier version or deactivate and reactivate the software license.)

Data Files

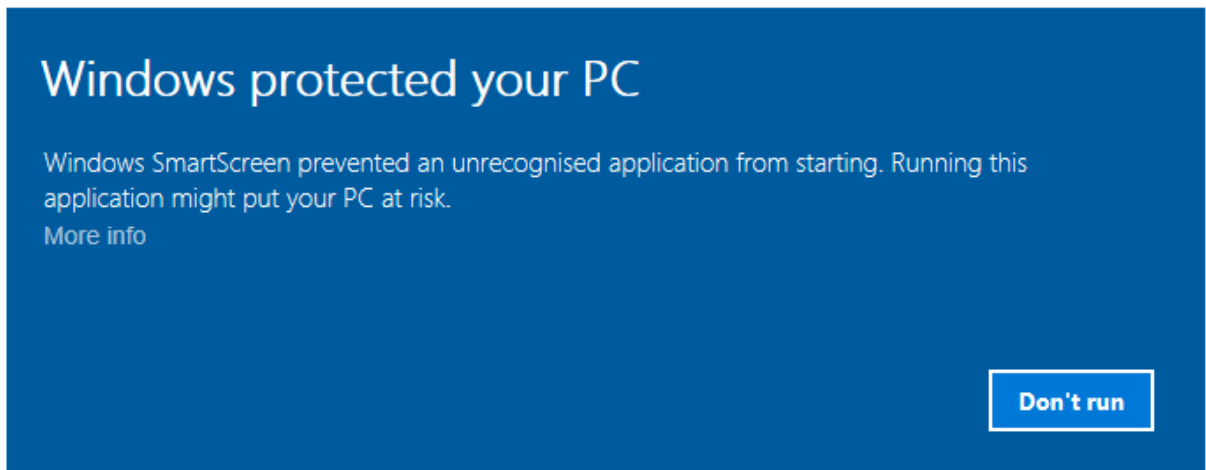
When upgrading an existing installation, your original data files (as stored under the **Assay Data Folder Root**, e.g. Documents\MyAssays) are preserved, any new data files (such as new installed protocols) are automatically added.

If you wish to reset all data files to a clean install state then navigate to your **Assay Data Folder Root** and delete (or backup) all files and sub-folders. The next time MyAssays Desktop Explorer is launched the data files are reset to the clean install state.

Installation

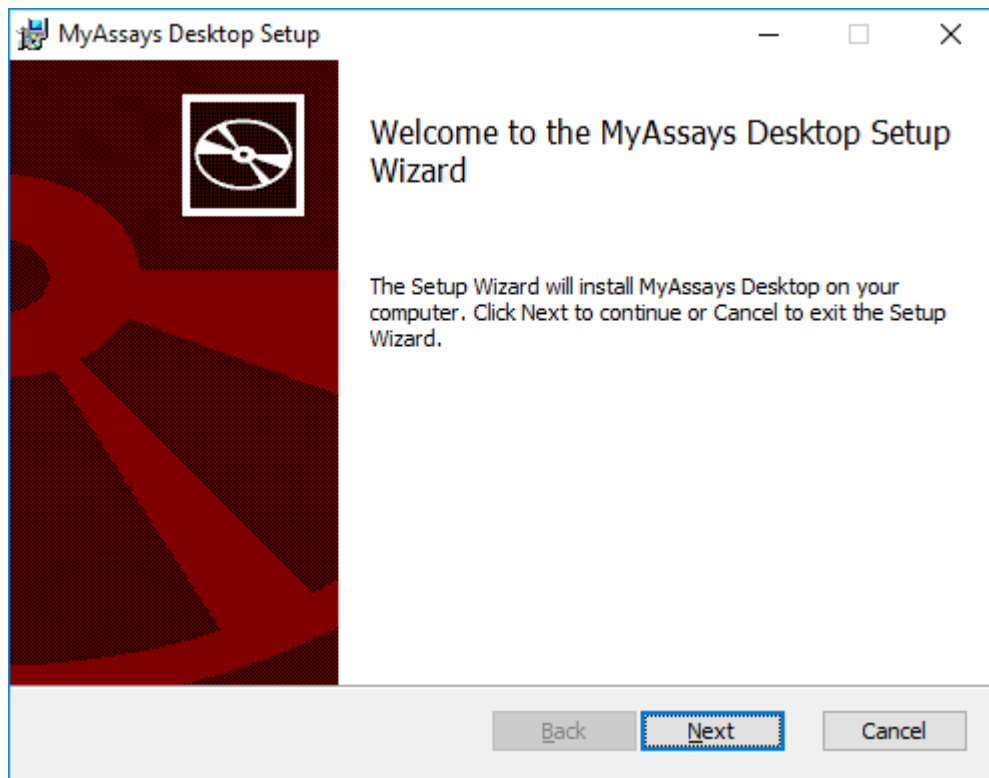
The installation process must be performed using a Windows account with administrator privileges.

1. Download and launch the MSI file. If prompted:



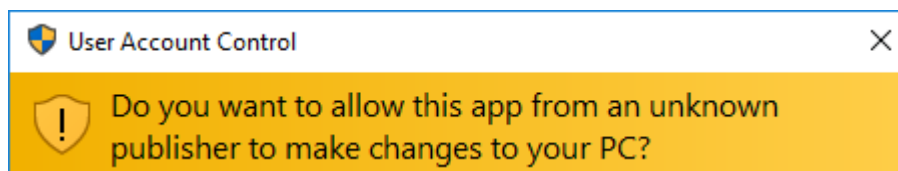
Press **More info** and select **Run anyway**

2. Follow the steps through the wizard:



Providing the requested information.

3. If prompted:

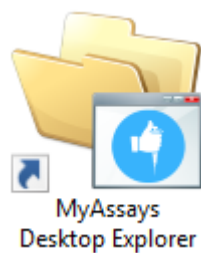


Allow installation by pressing **Yes**.

4. On completion, optionally tick to **Launch MyAssays Explorer** and then press **Finish**.

Launch

After installation, the **MyAssays Explorer** icon will appear on the desktop:



Use this to start the application.

Apr 16th 2018



Licensing

A license is required to use the application. The first time the application is launched, the **License Activation Wizard** will be launched. Use this wizard to provide your product serial code and email address.

Uninstall

The software installations can be uninstalled using the standard Windows uninstall function (from Control Panel | Uninstall a Program).

Further Information

The following online video resources provide various walkthroughs of the software.

Getting Started

<https://www.myassays.com/myassays-desktop-quick-start.video>

<https://www.myassays.com/myassays-desktop-fundamentals.video>

<https://www.myassays.com/download-and-use-protocols-from-myassays.video>

<https://www.myassays.com/myassays-desktop-flagging-outliers.video>

Importing Data

<https://www.myassays.com/import-measurement-data-from-excel-files-with-myassays-desktop.video>

<https://www.myassays.com/import-measurement-data-from-multiple-excel-files-with-myassays-desktop.video>

ELISA

<https://www.myassays.com/elisa-data-analysis-with-myassays-desktop.video>

<https://www.myassays.com/multiple-plate-elisa-with-myassays-desktop.video>

Create a Custom Protocol

[https://www.myassays.com/create-a-custom-protocol-with-myassays-desktop-pro-\(1-of-3\).video](https://www.myassays.com/create-a-custom-protocol-with-myassays-desktop-pro-(1-of-3).video)

[https://www.myassays.com/create-a-custom-protocol-with-myassays-desktop-pro-\(2-of-3\).video](https://www.myassays.com/create-a-custom-protocol-with-myassays-desktop-pro-(2-of-3).video)

[https://www.myassays.com/create-a-custom-protocol-with-myassays-desktop-pro-\(3-of-3\).video](https://www.myassays.com/create-a-custom-protocol-with-myassays-desktop-pro-(3-of-3).video)

Worklists

<https://www.myassays.com/myassays-desktop-sample-ids-and-worklists.video>

Export

<https://www.myassays.com/myassays-desktop-custom-export-for-lims.video>

Multiplex

<https://www.myassays.com/myassays-desktop-automatic-launching-of-multiplex-analysis.video>

<https://www.myassays.com/myassays-desktop-introducing-the-multiplex-protocol.video>

Folder Poll

<https://www.myassays.com/folder-poll-with-myassays-desktop.video>

Apr 16th 2018



Inter-Assay Quality Control

<https://www.myassays.com/myassays-desktop-inter-assay-quality-control.video>

Rack Layout Editor

<https://www.myassays.com/myassays-desktop-introducing-the-rack-layout-editor.video>

<https://www.myassays.com/create-a-quantitative-radioimmunoassay-with-myassaysdesktop-pro.video>

Library Curve Fit

<https://www.myassays.com/re-use-standards-curve-with-a-library-curve-fit.video>

Report Templates

<https://www.myassays.com/myassays-desktop-report-templates.video>

Calculating Z Factor/Z Prime (Z')

<https://www.myassays.com/calculating-z-factor-z-prime-using-evaluations.video>

Working with Kaleido 2.0

[https://www.myassays.com/folder-poll-with-myassays-desktop-pro-and-kaleido-2-0-\(1-of-2\).video](https://www.myassays.com/folder-poll-with-myassays-desktop-pro-and-kaleido-2-0-(1-of-2).video)

[https://www.myassays.com/folder-poll-with-myassays-desktop-pro-and-kaleido-2-0-\(2-of-2\).video](https://www.myassays.com/folder-poll-with-myassays-desktop-pro-and-kaleido-2-0-(2-of-2).video)

More...

We will be adding more videos in due course.

What's New?

This section summarises key enhancements since previous versions (for more details please refer to relevant section in User's Guide):

Enhancements Since R3

Improved Support for Kaleido 2.0

Various enhancements to improving working with Kaleido 2.0. Please also ensure latest Folder Poll release is used (available from <https://www.myassays.com/folder-poll>)

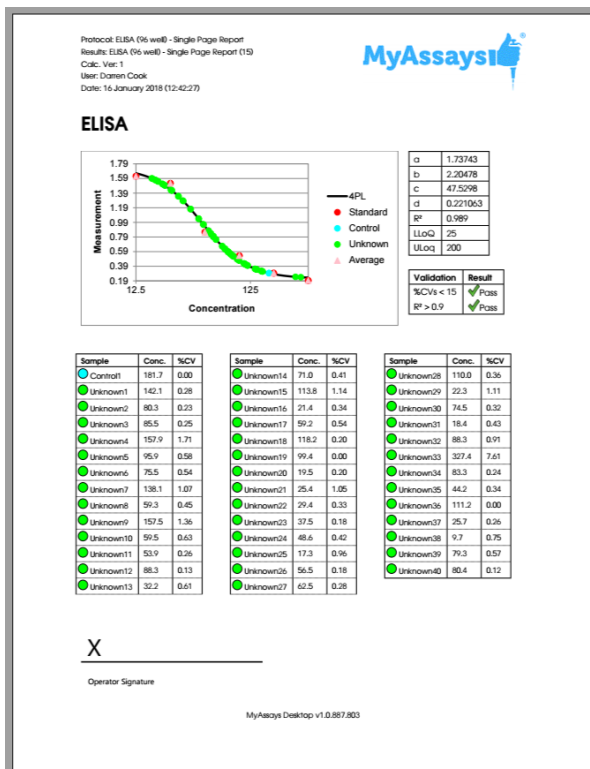
Support for Larger Rack Layouts

R3 was limited to rack layouts up to 26 racks. This limit has been increased.

Enhancements Since R2

New Installed Protocols

- 4PL (Constrained by B0 and NSB) Quantification
- 4PL Quantification
- ATP Lite
- Best-Fit Quantification
- DNA 260nm
- DNA Quantification
- Dose-Response Curves for EC50
- ELISA
- ELISA (96 well) - Single Page Report (*click Page View*)



- LANCE cAMP
- Linearized (Logit-Log) Quantification
- Z-Factor

Video Links in Protocols

- Dose-Response Curves for EC50 (96 well).assay-protocol
- Multiplex.assay-protocol

Excel Viewer in MADE

The XLSX viewer works on the **Reports** and **Measurements** folder in MAD Explorer. The **Reports** folder is the default location of reports exported from MAD, so you can easily view MAD's Excel output there. The **Measurements** folder is not displayed by default, it can be enabled from **File | View | Show Measurements Folder**. (With this view enabled you can copy or store XLSX files in here so that you can view them without Excel. Also, you can select cells and right-click to copy and then paste to other applications.)

Rack Layout Editor

For rack-based assays and RIA. See:

- <https://www.myassays.com/myassays-desktop-introducing-the-rack-layout-editor.video>
- <https://www.myassays.com/create-a-quantitative-radioimmunoassay-with-myassaysdesktop-pro.video>

Transform: Standard Curve Fit (from Library)

Walk-through at <https://www.myassays.com/re-use-standards-curve-with-a-library-curve-fit.video>

Dose-Response Curves

See <https://www.myassays.com/dose-response-curves-for-ec50-with-myassays-desktop.video>

Series Mode Advice

Calibrator	Conc.	Units:
Standard1	400	ng/mL
Standard2	200	
Standard3	100	<input type="button" value="Series"/>
Standard4	50	<input type="button" value="x"/> <input type="button" value="÷"/>
Standard5	25	<input type="text" value="2"/>
Standard6	12.5	<input type="button" value="Paste"/>

Series mode is on. In this mode, the concentration value of the first calibrator can be specified; the remaining values are computed in accordance with the series settings. To freely edit all concentration values exit **Series** mode.

Standard Curve Fit | Custom Fit

Fit your data to your own custom fit equation. Reference results of previous fits. For example, with parallel line analysis fit an initial unrestrained fit and then fit other curves which where curve coefficients are constrained.

Example custom fit equations:

4PL: $d + ((a-d)/(1+(x/c)^b))$

4PL with additional R coefficient: $d + ((a-d)/(1+(r*x/c)^b))$

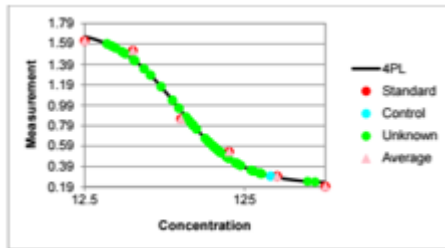
Computes 4PL using coefficients generated from transform 1 and calculates C value:

$toV1.d + ((toV1.a - toV1.d)/(1+(x/c)^{toV1.b}))$

Computes 4PL using coefficients generated from transform 1 and calculates C value R:

$toV1.d + ((toV1.a - toV1.d)/(1+(r*x/toV1.c)^{toV1.b}))$

Standard Curve Fit / Show Points on Curve Option



Additional Goodness Measures

- Degrees of Freedom
- AIC
- AICc
- BIC
- DWS

New Best Fit Score Methods

- 1/AIC
- 1/AICc
- 1/BIC

Probability Functions

- f.dist
- f.inv

Overview Editor

Right-click on overview text in protocol to edit overview text and description.

Curve Overlay Feature

Chart Size Report Option

Small, Medium and Large.

Nivo 2.0.2 Support

Luminex 2.1 Support

Text Report Element with Macros

Include custom text elements in your report and reference macros, including meta data, protocol and results information, data and version numbers.

Validation Report Element Updates

Sample Table Sort Order

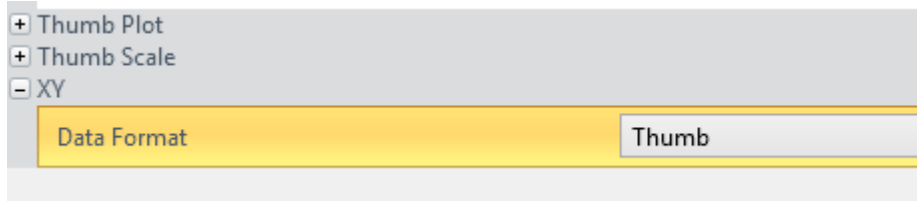
Sort Sample Table via a custom column (e.g. arrange results by concentration from highest to lowest). See **OrderByColumn** and **OrderBySequence** settings.

Evaluation Variables

Name evaluation variables for reference in other settings.

XY Output options

Configure appearance of XY data in report. This can be used to display kinetic or spectral data as a graphic or table of values in different formats.



Multiplex Page Report Template

Multiplex page report template now defined by single analyte and applied to all analytes (each analyte on a new page).

Help Page and User Guide Updates

Comprehensive updates to Help Page and User Guide. Including new Curve Fitting section covering tips on fit selection and advanced configuration.

Enhancements Since R1

Help Pages and Manual Integration

Help Pages and Manual Integration are available in MADE (from **Support** ribbon tab)

Help Page can be launched from help icon in MAA (on right of ribbon)

Video Updates (available from Welcome Screen)

- Quick Start
- Flagging Outliers

VICTOR Nivo XLSX Import

Automatic importing of VICTOR Nivo XLSX data.

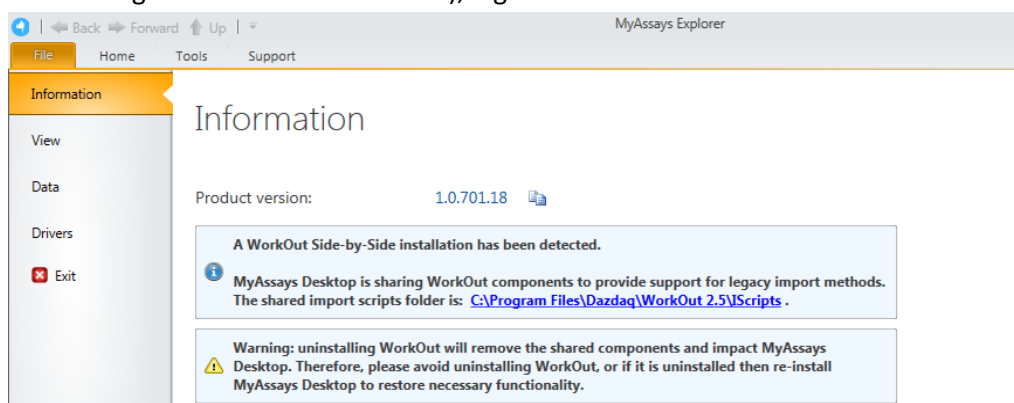
Kinetic Spectral data is imported with each wavelength as a separate matrix.

(Scan mode import is not supported)

Support for installing MAD alongside WorkOut

Improved support for installing MAD on a system with WorkOut installed:

- WorkOut will continue to operate if MAD is installed
- If WorkOut is using any custom import scripts then these will be available to MAD
- After uninstalling MAD, WorkOut will continue to operate
- The integration works with Kaleido 2.0 update
- If MAD detects WorkOut then information about the side-by-side configuration is displayed in MADE File | Information area with information and warning notices (to advise against uninstalling WorkOut in this scenario), e.g.



- If WorkOut is uninstalled after MAD is installed then user is advised to update/repair MAD installation (when dependent import features is attempted)

Histogram Report Element

Add histograms to the report. Select any endpoint matrix and which types to include. Optionally include error bars.

Best Fit UI

Select which fit methods to use

Updated ELISA example protocols

Example 96 and 384 well example protocols

XY Baseline Correction Transform

XY Reduction X Between Y transform

Multiple Plate Layout Editor Tip

Chart Plot Area Fill Colour

Now white (was grey)

Standard Charts Error Bars

(Currently only available as XML setting option in **StandardCurveFit** element.)

Update Standard License

For Standard/Basic licenses upgrade links are provided to online content for upgrades.

Matrix Position Reference

Use # syntax in expressions to refer to the associated position on a matrix (see help for more details)

XLS/XLSX Source

When importing XLSX/XLS content Source tab is available to show content.

Label Enhancements

Apply labelling highlight to whole row. Apply labelling to selected types only.

Export Wizard

Supports custom export plugin DLL.

Enhancements Since v1.0.641.3

Multiplex Protocol Update

Terminology change Plate Dilution Factor and Sample Dilution Factors.

Multiplex Concentrations Editor Enhancements

Including:

- Specification of different units per analytes
- Matching Units option
- Non-serial or serial concentration values

Import Method Additions

Automatic import of analyte names from supported files.

- Support for Luminex xPonent CSV multiplex
- Support for MSD CSV and TXT multiplex files

Sample Labelling

Easy-to-use sample labelling editor including colour pickers for text highlight and text colour.

Best Fit

Now defaults to 4PL and 5PL fit methods weighted and unweighted.

Best Fit Score Method Options

Presets available for various common scoring methods

Support for Large Text Sizes

With support for large text sizes as commonly used with larger screen resolutions (e.g. 3000x2000 displays)

SheetName option per TransformContent Element

This allows transform content elements to appear on different sheets (e.g. Fit Chart and Best Fit table can now appear on separate sheets)

Export Plug-In Option

Export Wizard includes option to select Export Plug-In Option to use for output.

Infinite Weight

When using a zero standard in the fit, e.g. so the calibrator is (0,0), if using a weight method such as $1/y^2$ then this will result in an infinite weight that can skew the fit. When this occurs a warning message appears.

Also, this can be resolved using advanced XML setting for Standard Curve Fit to replace any infinite weight with the maximum finite weight in the set optionally multiplied by a factor, e.g.

```
WeightInfinityResolution="MaxFiniteMultipliedByFactor"  
WeightInfinityReplacementFiniteMaxFactor="2"
```

Enhancements Since v1.0.621.602

Feature Licensing

Multiplex feature now requires a specific license type. If you do not have a multiplex license contact support for an updated license.

Cached Tab Selection

Switching between the main tabs in the Analysis window is now even faster.

Flags View

View flagged items from Flags view option (available after any point or position is flagged)

Units Specification

Currently via XML only

Transform Output Variables

For referring to transform calculations and evaluations in expressions.

Enhancements Since v1.0.593.182

Layout Editor Update

The Layout Editor has been replaced with a faster implementation that no longer requires Silverlight.

Apr 16th 2018



Best Fit Feature

The Standard Curve Fit transform now offers the Best-Fit fit method. When selected, a Scoring Method can be selected to use to sort fit results and pick the best.

Support for Comma Decimal Separator Systems

The application now works with the system's current culture settings. Any numerical values (including data and parameter) should be specified using the systems culture settings. E.g. "1,23" on a typical European configuration is equivalent to "1.23" on a US-based system.

Faster Tab Selection

Switching between the main tabs in the Analysis window is now faster.

Integrated Transform Help

In the configured transforms list a help icon is now available to open the help page associated with the transform.

Known Issues

Victor Nivo kinetic data is plotted on chart with X Axis title reading "Cycle" it should read "Time"

Plotted values are actually time points.

Keyboard Occasionally Loses Control Focus When Editing Certain Property Values

To resolve this press Esc key to continue with keyboard entry.

Value Bars do not appear in Sheet View

Currently any configured Value Bars do not appear in Sheet View. They do appear in Page View and in Excel exports.

Best Fit Search is not valid. Fit method could not be detected.

This message will occur if a protocol was created with a version before the Best Fit feature was added (a pre-release version) but is then changed to use the Best Fit method. (This currently includes the pre-installed Multiplex protocol) To resolve this, the easiest solution is to select a different fit method or recreate your protocol with the new installation to use the Best Fit feature.

Alternatively, insert the following XML snippet under the StandardCurveFit element in the XML tab.

```
<?xml version="1.0" encoding="utf-8" ?>
<BestFitSearch xmlns="http://www.myassays.com/bestfitsearch"
WeightCSV="None,1/y2,1/x2,x2,y2" ScoreMethod="R2">
  <Method DisplayName="4PL" FactoryName="4PL"/>
  <Method DisplayName="5PL" FactoryName="5PL"/>
</BestFitSearch>
```