

Release Notes for Folder Poll R10.3

Product Version Number: **R10.3 - v10.3.242.907**

Overview

This document contains the release notes for Folder Poll providing the latest information about the specified version, including:

- [Download and Installation Instructions](#)
- [How to Contact Support/Provide Feedback](#)
- [System Requirements](#)
- Sources of Further Information
- [What's New in this Release?](#)

Download Links

Installation

For 32-bit:

<https://myassaysfiles.blob.core.windows.net:443/release/folder-poll/r10.3/Folder-Poll-Setup-x86-v10.3.242.907.msi> (29.7 MB)

For 64-bit:

<https://myassaysfiles.blob.core.windows.net:443/release/folder-poll/r10.3/Folder-Poll-Setup-x64-v10.3.242.907.msi> (29.7 MB)

User's Guide

The User's Guide is available for download from:

<https://myassaysfiles.blob.core.windows.net:443/release/folder-poll/r10.3/Folder-Poll-User's-Guide-v10.3.242.907.pdf> (1.3 MB)

Support

For technical support please email support@myassays.com.

Feedback

Please provide any feedback, suggestions, or feature requests to support@myassays.com.

System Requirements

Supported Operating Systems

- Windows 7 (32-bit and 64-bit)
- Windows 8.x (32-bit and 64-bit)
- Windows 10 (32-bit and 64-bit)
- Windows 11 (64-bit)

Software Requirements

Microsoft .NET 4.7.2 or later must be installed (this is pre-installed on newer Windows 10 systems). For earlier versions of Windows, if it is not already installed on your system or you are not sure, please download and install from: <http://go.microsoft.com/fwlink/?LinkId=863262>.

More information about the .NET 4.7.2 installation can be found at: <https://support.microsoft.com/en-gb/help/4054530/microsoft-net-framework-4-7-2-off-lineinstaller-for-windows>.

Integration with MyAssays Desktop

If you plan to use Folder Poll with MyAssays Desktop, this release of Folder Poll is compatible with MyAssays Desktop R6 and later. If you are using an earlier version of MyAssays Desktop, upgrade to the latest MyAssays Desktop release; contact support@myassays.com for more information.

Product Home Page

Includes Video Guides, User's Guide and download links at <http://www.my-assays.com/folder-poll>.

Installation

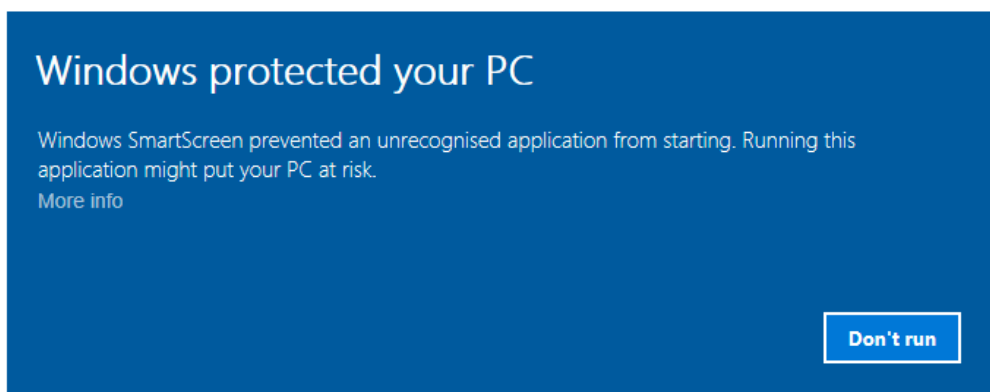
Standard Installation

If you are installing Folder Poll for use with MyAssays Desktop/WorkOut Plus MMD and Kaleido, then please see section [Procedure for Integration with MyAssays Desktop/WorkOut Plus MMD and Kaleido](#), otherwise follow the standard installation below.

The installation process must be performed using a Windows account with administrator privileges.

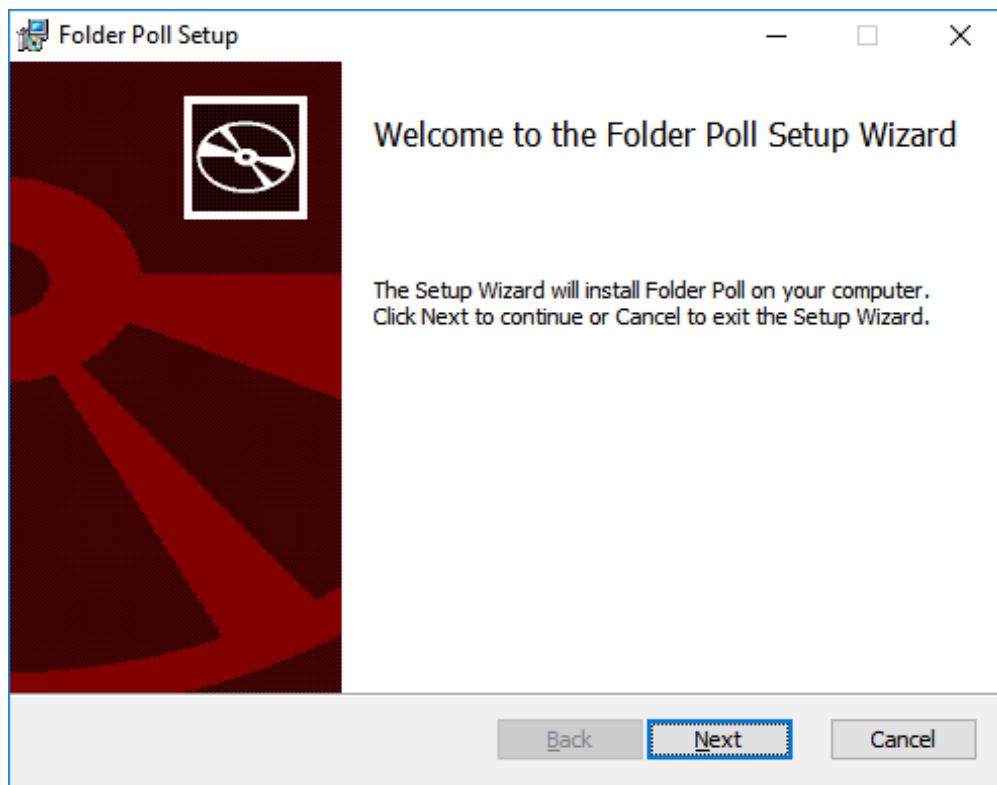
To install Folder Poll, follow these steps:

1. Download and launch the MSI file. If prompted:

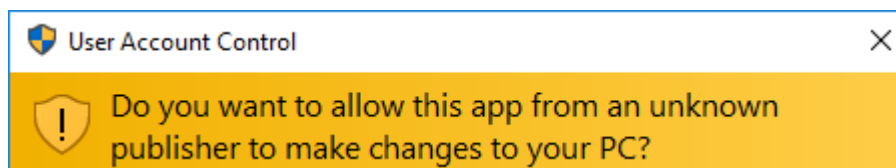


Click **More info** and select **Run anyway**.

2. Follow the steps of the Folder Poll Setup Wizard and provide the requested information:



3. If prompted:



Click **Yes** to allow installation.

4. On completion, optionally select to **Launch Folder Poll Manager on exit** and then click **Finish**.

Launch

After installation, the Folder Poll Manager icon will appear on the desktop:



Use this to start the application.

Uninstall

You can uninstall **Folder Poll** from the **Control Panel**. The Folder Poll Service will stop when the application is uninstalled.



For your convenience, the serviceConfig.xml and log file can be optionally removed by the uninstall process. Keep these files if you need them after uninstall (this is useful if you are upgrading the software and want to keep your data).

Procedure for Integration with MyAssays Desktop Pro/WorkOut Plus MMD and Kaleido 1.x/2.0/3.0/4.x

After installing and activating MyAssays Desktop/WorkOut Plus MMD, install Folder Poll using an administrator account as follows:

1. Launch the Folder Poll Installation MSI.
2. Follow the installation instructions to complete the installation.
3. Launch **Folder Poll Manager** from shortcut on the desktop.



If you already have installed WorkOut or MyAssays Desktop with Folder Poll license included, then your Folder Poll license will be applied automatically.

5. If the Kaleido Programdata folders exist, then Folder Poll Manager will prompt to confirm automatic configuration of Kaleido Folder Polls. Select **Yes** to apply this configuration and start service.
You can view settings onscreen in the **Services** tab or in the **XML** tab of the Folder Poll Manager.
6. At this point you can close the Folder Poll Manager window. The service will continue to run – even after reboot.

What's New?

For those users already familiar with earlier releases of Folder Poll, this section lists the latest enhancements by version.

Updates in R10 (detailing changes since R9)

Support for Kaleido 4

Support for Kaleido 4 integration has been added. When a Kaleido 4 installation is detected, Folder Poll will provide a prompt allowing users to automatically apply the default integration configuration.

Updates in R9 (detailing changes since R8.2)

Launching Folder Poll Service with a Different Account

Where Folder Poll requires access to resources not available to the System account, the Folder Poll service can be configured to run under a different account that does have access. More...

Fixes

- Encrypt Configuration causes Folder Poll to fail to restart has been fixed.

Updates in R8.2 (detailing changes since R8)

Fixes

- Incorrect filter implementation with the non-interval watcher has been fixed.
- Invalid obfuscation process that resulted in "Unhandled exception occurred. System.ComponentModel.Win32Exception (0x8004005): A specified privilege does not exist" exception has been fixed.

Updates in R8 (detailing changes since v3.0.1543.886)

New Version/Release Numbering System

Version number of Folder Poll will now be linked to MyAssays Desktop Release numbers (note the jump from v3.0.1543.886 to R8).

Start and Stop Single Polls

Use the **Disable** option to disable a single poll while retaining its settings for future use.

Impersonation Wizard

New Impersonation Wizard allows users to test access to the specified location with provided credentials, simplifying the impersonation configuration. More... [Video Walk-through...](#)

Encrypt Configuration

For users with Folder Poll Enhanced Security the **Encrypt Configuration** feature will encrypt the Folder Poll configuration. This is useful if the configuration contains sensitive information such as credentials. [More...](#)

ImpersonationLogonType

The default value for the XML attribute is changed to ImpersonationLogonType="NewCredentials" so if ImpersonationLogonType is not specified, then NewCredentials will be applied (instead of Interactive).

This means for users working with earlier versions and using the Interactive LogonType, if this was not specified with the ImpersonationLogonType attribute, this setting must be added when upgrading to R8. For most scenarios, ImpersonationLogonType="NewCredentials" would be used.

Folder Existence Interval Polling

By default, if a polled folder is deleted, the Folder Poll service will no longer poll the folder. If the folder is recreated, then polling will not be reinstated on the new folder. For scenarios where a polled folder might be deleted and restored, use Folder Existence Interval Polling to periodically check for the existence of the polled folder. If the polled folder is deleted and restored, with Folder Existence Interval Polling enabled, the folder polling will be resumed. More...

Fixes

- Error "The service host could not be initialized. Please contact administrator for further assistance." has now been addressed through an improved WCF configuration.
- New file not detected issue has been addressed through enhanced logging.

Updates in v3.0.1543.886 detailing changes since v3.0.1520.596

Encrypt Configuration Support with MyAssays Desktop

The Encrypt Configuration feature can now be used with a MyAssays Desktop integration.

Updates in v3.0.1520.596 (detailing changes since v3.0.1436.926

Encrypt Configuration Option

Option to encrypt the Folder Poll configuration files so that it cannot be modified or viewed outside of Folder Poll Manager.

Support for file filter without extension

File filters will now match files with no extension. For example, **Filter="fre*.*"** will match both "fred.txt" and "fred". Also, a file filter to match only files without an extension can be used, e.g. **Filter="fre*."** will match any file starting with "fre" without an extension.

Updates in v3.0.1436.926 (detailing changes since v3.0.1280.496)

Integration Updates for MyAssays Desktop R5

If you are using Folder Poll with MyAssays Desktop Pro R5 then this Folder Poll update is required.

Updates in v3.0.1280.496 (detailing changes since v3.0.1257.547)

Kaleido v3.0 Default Configuration

When a default configuration is applied to Kaleido, the Folder Poll automatically polls for **Alpha 384-well Screening*.xml** and **Cell Confluency Assay Development*.xml** files.

Updates in in v3.0.1257.547 (detailing changes since v3.0.1048.1154)

Polling Subfolders UI

When polling local folders, you may include subfolders of the polled folder with **Include Subfolders** check box.

Updates in v3.0.1048.1154 (detailing changes since v3.0.981.554)

Including Subfolders to the Poll

When polling local folders, you may prefer to monitor the files located not only in the polled folder but in its subfolders too. In this case, in the XML, add **IncludeSubdirectories** attribute to the **Poll** element and set it to true.

Source Folder Macros

Added **SourceFolder** and **SourceFolderNoQuotes** for launching files in applications that require path to the source folder with or without quotes.

User's Guide Updates

Comprehensive updates to User's Guide. Including new Working with MyAssays Desktop Pro topic and covering new features and advanced configuration.

Updates in v3.0.981.554 (detailing changes since v3.0.739.934)

Kaleido 2.0 Default Configuration

If Kaleido 2.0 software is installed, then a default configuration is applied when Folder Poll Manager is first launched.

Interval Polling for Network Folders

If the folder to poll is a network folder (starts with ****), then Folder Poll will apply Interval Polling. This polling strategy checks the target folder for new files at the specified interval.

Polling Renamed Files

Performing actions when a new file is created using a partial file that is renamed on completion is now supported. Folder Poll service monitors the files that are saved in a temporary location and renamed after the download or export is complete.

Unquoted File Macro

New Application Argument Macro **SourceFileNameNoExtNoQuotes** is added to support scenarios where application requires argument without quotes.

Impersonation Enhancements

With new Impersonate On setting, you can specify the target on which the provided credentials will apply (such as accessing the folder to poll, performing actions, or both options simultaneously).

With advanced XML impersonation settings, you can optionally provide different authentication credentials for the folder to poll and executing the configured operations.

Preserving Properties of the File

When moving newly detected files to a specified location, you can define whether the modified state and ownership of a file is changed or preserved.

Updates in v3.0.739.934 (detailing changes since v2.5.5527.26588)

Support for Polling Network Folders

Network folders can now be polled with Interval Polling. This method checks the contents of the polled folder for new files at a regular interval. The default interval is 10 seconds.

Folder Poll List Improvements

- Clearer information about each polled folder
- Configuration summary
- Polled folder hyperlinks
- Status of each poll

Launch MyAssays Desktop/WorkOut Protocol Options | Auto-Name Protocol

With Auto-Name Protocol setting, the Folder Poll can determine the name of the protocol to launch from the name of the newly detected file. You can select a method to extract the protocol's name from a file. If the determined protocol filename does not exist, then WorkOut/MyAssays Desktop is not launched.

Simpler Kaleido Workflow

The Auto-Name Protocol feature greatly simplifies integration with Kaleido. It is no longer necessary to create a new folder poll for each and every WorkOut/MyAssays Desktop protocol. Instead, a general Folder Poll method can be applied to launch a WorkOut/MyAssays Desktop protocol that corresponds to a Kaleido protocol.

Handling Read-Only Files

If a new file is detected with the Read-only attribute set, then this attribute is removed before the Move operation is performed (so that the file can be moved). Further details are added to the Folder Poll log.

Launch MyAssays Desktop/WorkOut Protocol Options | Advanced

Under Launch WorkOut protocol and Launch MyAssays Analysis options, there is an Advanced menu to configure how to launch the application and, optionally, provide

command-line parameters.