

Folder Poll

General User's Guide



MyAssays Ltd.

©2023

www.myassays.com

Table of Contents

Introducing Folder Poll	5
Key Components	6
Folder Poll Service	7
Folder Poll Manager	7
Folder Poll Configuration	7
Product Versions	8
Getting Started	9
System Requirements	9
Supported Operating Systems	9
Software Requirements	9
Integration with MyAssays Desktop	9
Installer	10
Installation	10
Uninstalling Folder Poll	12
Launching	13
Licensing	14
Licensing Details	15
Using Folder Poll	16
Services	17
View List of Configured Polls	18
Start and Stop	20
Log Settings	21
Poll Configuration Window	22
General Tab	23
Operations Tab	24
Impersonation Tab	26
Log	28

Logged Operations	29
Working with Folder Poll	31
Working with Network Folders	32
Working With Protected Folders	33
Impersonation	34
Locked Files	36
Launching an Application	37
Working With WorkOut Plus	39
Working with MyAssays Desktop Pro	40
Auto-Name Protocol	42
Advanced Options for Launching MyAssays Desktop or WorkOut Protocols	44
Working with Kaleido and MyAssays Desktop Pro	46
XML	49
Encrypt Configuration	50
Advanced Configuration	52
Advanced Impersonation Settings	53
Command Line Parameters	55
Changing Folder Poll Configuration Programmatically	56
File Conflict	57
Hidden Files	58
Launching Folder Poll Service With a Different Account	58
Polling Subfolders	62
Polling Renamed Files	63
Preserve Settings for Move Operation	64
Security Functions	65
Snippet	66
What Is a Snippet?	66
Example - How to Use a Snippet?	66

Automate Snippets with MyAssays Desktop	67
Trademarks	68
Additional Software License Notices	69
Online Resources	71
Technical Support	72
Index	73

Introducing Folder Poll

The Folder Poll application monitors folders that you specify and automatically moves, copies, or launches an application when a new file appears in the folder.

You can configure the application using [Folder Poll Manager](#) or with an [XML configuration](#) file. The XML approach offers additional flexibility and convenience for more advanced scenarios.

[Folder Poll Manager](#) has an easy-to-use user interface for:

- Starting and stopping [Folder Poll service](#)
- Editing settings via validated controls

The **Folder Poll** handles new files appearing in monitored folders. When a new file is detected in the folder you set up to poll, you can configure the service to:

- Copy/Move/Launch external programs (including WorkOut Plus/MyAssays Desktop)
- Copy or move files to protected resources (such as network locations)
- Log all operations
- Configure advanced scenarios in the XML

Key Components

The Folder Poll system comprises three key elements that work together:

- [Folder Poll Service](#) – A Windows service that runs in the background and performs the folder polling operations (this service has no user interface).
- [Folder Poll Manager](#) – A desktop application for managing the Folder Poll Service.
- [Folder Poll Configuration](#) – An XML detailing the configuration of the folders to poll and the various operations to perform.

Further resources including video tutorials and updates are available online at www.my-assays.com/folder-poll.

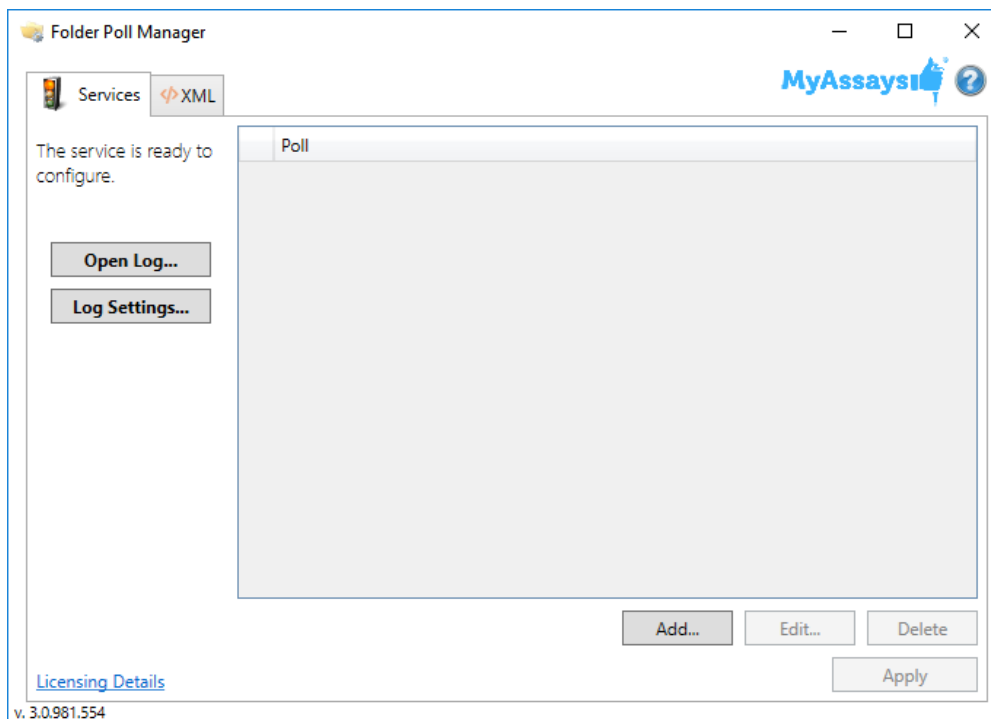
Folder Poll Service

The **Folder Poll Service** runs independently of [Folder Poll Manager](#). Once the service has been started, the service will continue to run and will run automatically when the system is restarted (even if a user other than the administrator has logged in to the PC). Thus, it is not necessary to launch [Folder Poll Manager](#) each time.

Folder Poll Manager

The [Folder Poll Service](#) can be run and configured manually through the [XML Configuration](#) file.

However, for convenience, the **Folder Poll Manager** is provided to simplify configuration and management through an easy-to-use user interface:



It comprises [Services](#) and [XML](#) tabs.

Folder Poll Configuration

The complete configuration of the Folder Poll system is defined in the XML file **serviceConfig.xml**, which is located in the folder where the application is installed.

XML files allow for easy configuration and transfer settings from one scenario to another. It's also possible for technical support to provide you with a configuration tailored to your scenario.

Product Versions

The product is available in two versions:

- Standard
- Enhanced Security

The **Enhanced Security** version includes advanced features not available in the **Standard** version. These include:

- Logging of operations (all operations performed by the service are logged in a text-based log file)
- XML configuration tool (advanced XML editor with auto-complete and inline help)
- Impersonation options (for accessing resources that require authentication such as a protected folder or secure network location)

Getting Started

System Requirements

Supported Operating Systems

- Windows 7 (32-bit and 64-bit)
- Windows 8.x (32-bit and 64-bit)
- Windows 10 (32-bit and 64-bit)
- Windows 11 (64-bit)

Software Requirements

Microsoft .NET 4.7.2 or later must be installed (this is pre-installed on newer Windows 10 systems). For earlier versions of Windows, if it is not already installed on your system or you are not sure, please download and install from: <http://go.microsoft.com/fwlink/?LinkId=863262>.

More information about the .NET 4.7.2 installation can be found at: <https://support.microsoft.com/en-gb/help/4054530/microsoft-net-framework-4-7-2-offlineinstaller-for-windows>.

Integration with MyAssays Desktop

If you plan to use Folder Poll with MyAssays Desktop, this release of Folder Poll is compatible with MyAssays Desktop R6 and later. If you are using an earlier version of MyAssays Desktop, upgrade to the latest MyAssays Desktop release; contact support@myassays.com for more information.

Installer

The installer is available in 32-bit or 64-bit versions. Make sure that you install the correct version for your operating system. If you are not sure which version you are running, press the **Windows Start** key and the **Pause** key or go to **Control Panel** -> **System** or **Security** -> **System** and check the **System** type setting.

For 32-bit systems, install the x86 version.

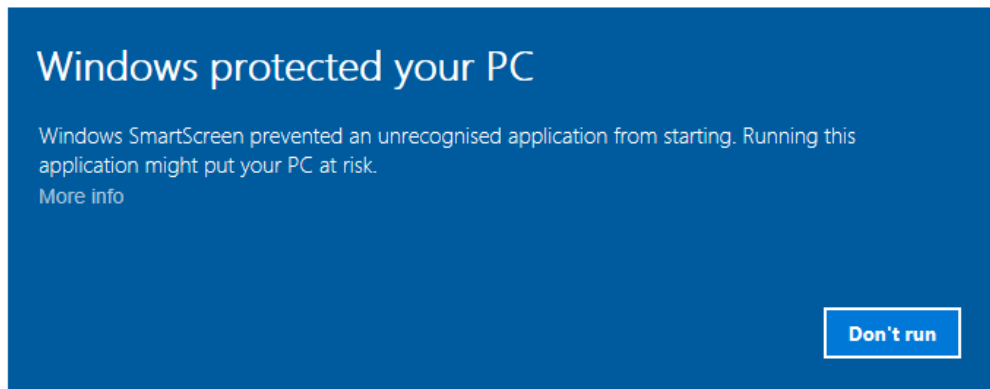
For 64-bit systems, install the x64 version.

Installation

The installation process must be performed using a Windows account with administrator privileges. Once started, the Folder Poll Service will run continuously (including after a system restart) and under any Windows login. Thus, the administrator can configure the tool to work for all operations performed by all users.

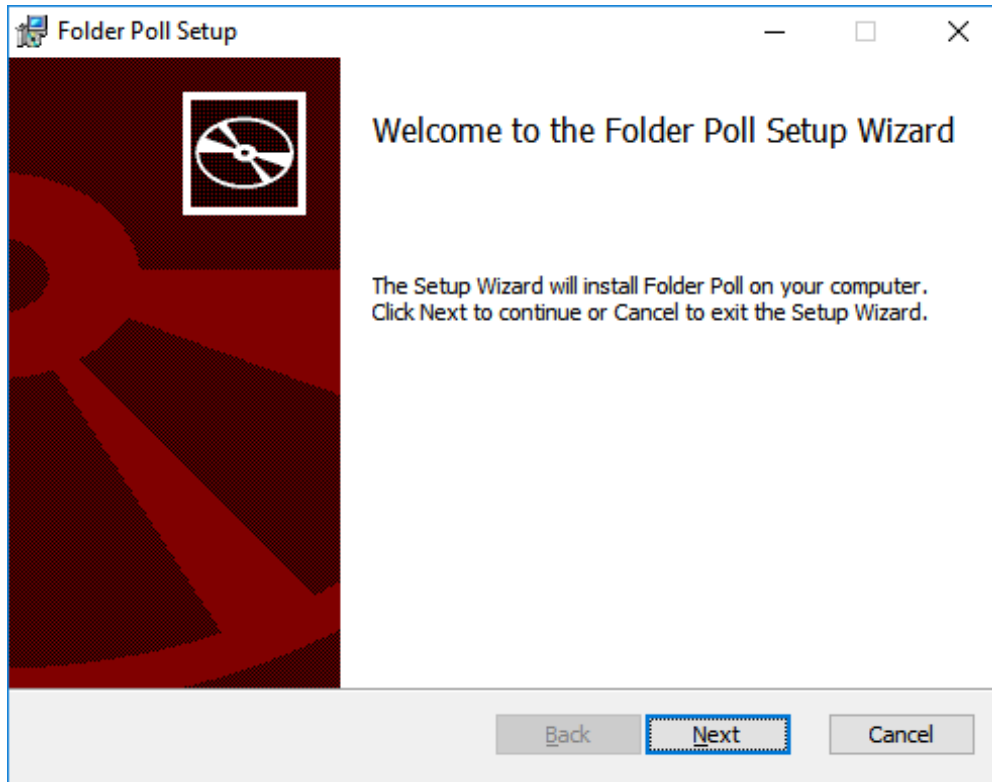
To install Folder Poll, follow these steps:

1. Download and launch the MSI file. If prompted:

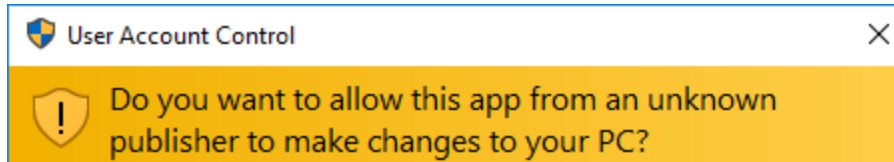


Click **More info** and select **Run anyway**.

2. Follow the steps of the Folder Poll Setup Wizard and provide the requested information:



3. If prompted:



Click **Yes** to allow installation.

4. On completion, optionally select to **Launch Folder Poll Manager on exit** and then click **Finish**.

Uninstalling Folder Poll

You can uninstall **Folder Poll** from the **Control Panel**. The [Folder Poll Service](#) will stop when the application is uninstalled.



For your convenience, the serviceConfig.xml and log file can be optionally removed by the uninstall process. Keep these files if you need them after uninstall (this is useful if you are upgrading the software and want to keep your data).

Launching

The [Folder Poll Manager](#) application requires administrator privileges to run. This is because the program makes changes to the system (specifically starting/stopping the Windows service and modifying the configuration of the [Folder Poll service](#)).

After installation, you will see the MyAssays Desktop Explorer icon on your desktop. To launch the application, click it or:

On Windows 10:

Select **Start**, then scroll down to and click the Folder Poll Manager icon.

For earlier versions of Windows:

- **Windows 8.1 or Windows 8:** Swipe up or choose the arrow at the bottom of the **Start** screen to see a list of all your applications. You might need to scroll left or right to see the Folder Poll Manager.
- **Windows 7:** Choose **Start > All Programs** to see a list of all your applications and click the Folder Poll Manager icon.



If you use Folder Poll alongside MyAssays Desktop, you can launch Folder Poll Manager directly from MyAssays Desktop Explorer. To do this, on the **Tools** ribbon tab, in the **Utilities** group, click **Folder Poll Manager** icon.

Licensing

Folder Poll requires a valid license to activate the application. You can obtain a trial, temporary, or permanent license from MyAssays Ltd. A serial code represents your license to use the software. When you first launch the software, you must enter a valid serial code and activate your license.



A single license can be transferred between systems but can only be active on one system at a time.

Activating License

You must activate [Folder Poll Manager](#) before using it. The first time you run it, the **License Activation Wizard** will guide you through the activation process.



An administrator account is required to activate (or deactivate) a license.

To activate your license:

1. Launch **Folder Poll Manager**.
2. When prompted with a **User Access Control** message, click **Yes**.
3. Enter your product serial code to activate the software.

After completing the **License Activation Wizard** (or on subsequent runs of the **Folder Poll Manager** shortcut), the [Folder Poll Manager](#) application is launched and is ready to use.

You can review the information about your current license in the [Licensing Details](#).

Licensing Details

On the [Services](#) tab, click the **Licensing Details** link to view your product licensing details.

If you need to transfer your license to another PC, make sure to use this link to first deactivate your license on your current system before installing and activating it on a different system.

Using Folder Poll

This section summarizes the following information:

- [Services](#)
- [Poll Configuration Interface](#)
- [Working with Folder Poll](#)
- [Logging](#)
- [Working with WorkOut Plus](#)

Services

The **Services** tab provides controls for managing and configuring your folder polls within a user-friendly interface. It includes:

- [Folder Poll List](#) – Lists configured polls
- [Start/Stop Service](#) – Starts or stops polling configured folders
- [Log Options](#) – Sets up if the operations are logged and where to store the log
- [Licensing Details](#) – Contains details about your current license

View List of Configured Polls

Upon launching, Folder Poll Manager displays [Services tab](#) that lists your folders to poll (**Polls**) with a summary of configured operations in the polled folders list. You can configure multiple folder polls on the same or different folders.

How to Add a New Poll

1. Launch [Folder Poll Manager](#).
2. Click **Add**.
This opens the [Poll Configuration](#) window.
3. Set up a new poll, configure the operations to perform, and then click **OK**.
4. Click **Apply** to accept changes and update Folder Poll service.

How to Edit an Existing Poll

1. Launch [Folder Poll Manager](#).
2. Select a poll from the list and click **Edit** or double-click on it.
This opens the [Poll Configuration](#) window.
3. Review or edit poll configuration and then click **OK**.
4. After editing, click **Apply** to update the poll with changes to the configuration.

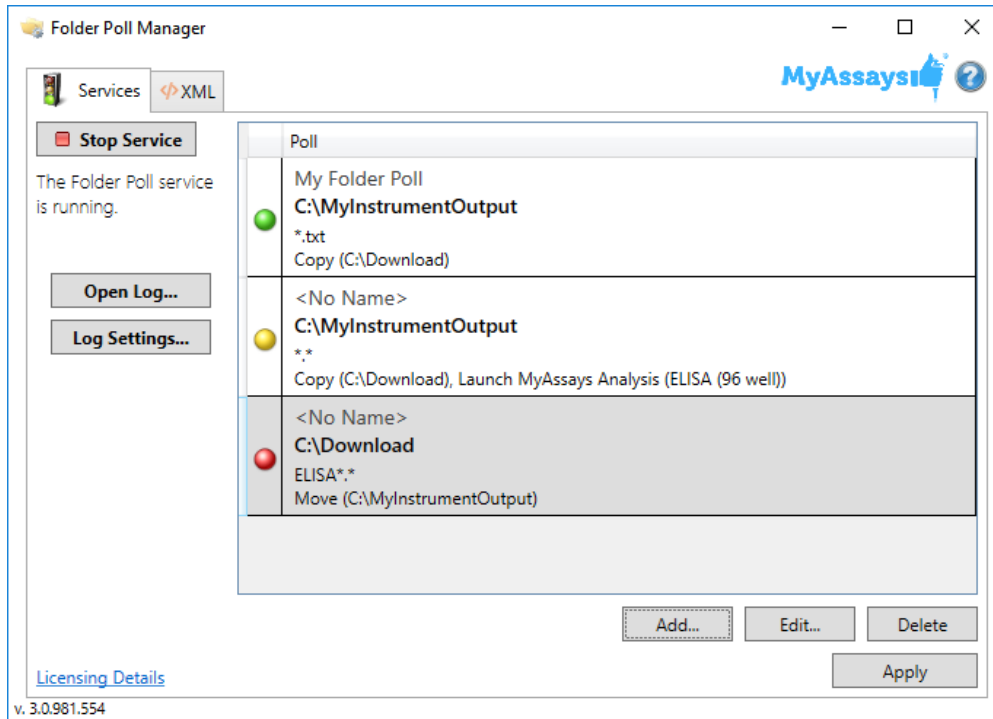
How to Delete an Existing Poll

1. Launch [Folder Poll Manager](#).
2. Select a poll from the list and click **Delete**.
3. Click **Apply** to update the poll with changes to the configuration.

Status of the Poll

The status of each folder poll is depicted with graphical icons:

- **Green** – For running (active) polls.
- **Yellow** – For running polls with changes to the configuration that are not yet applied.
- **Red** – For stopped (inactive) polls.
- **Grey** – For polls that are paused (disabled).



For convenience, the polled folders are hyperlinked. Hover the mouse over the name of the polled folder and click this link to open the folder in Windows Explorer.

Start and Stop

When there are any configured polls in the [Folder Poll list](#), click the **Start Service** to start them. This interactive button is located in the upper-left corner of the [Services](#) tab. When the polls are running, the button label changes to the **Stop Service** and is used to stop the configured polls.

In addition to the **Start Service/Stop Service** button, icons and status indicators describe the current status of the [Folder Poll Service](#).

The traffic light icon indicates the current status of the service.

Log Settings

All operations performed by the [Folder Poll Service](#) can be logged. Use the **Log Settings** button to configure these options. Click the **Open Log** button to open the log.

Poll Configuration Window

The **Poll Configuration** is launched when you click **Add** or **Edit** buttons on the [Services](#) tab, or double-click an existing poll. The window displays the available options, including further information about each in the icon infotips on the right of each setting.

It contains three tabs:

- [General](#) – For configuring a folder to poll
- [Operations](#) – For defining operations for the new detected files
- [Impersonation](#) – For accessing restricted or network folders

Selecting certain settings will reveal further settings. If necessary, resize the window to view additional settings.

General Tab

The **General** tab is used for specifying the folder to poll. You can use a file filter to select files matching your filter. It's also possible to name each poll.

Polled Folder Configuration

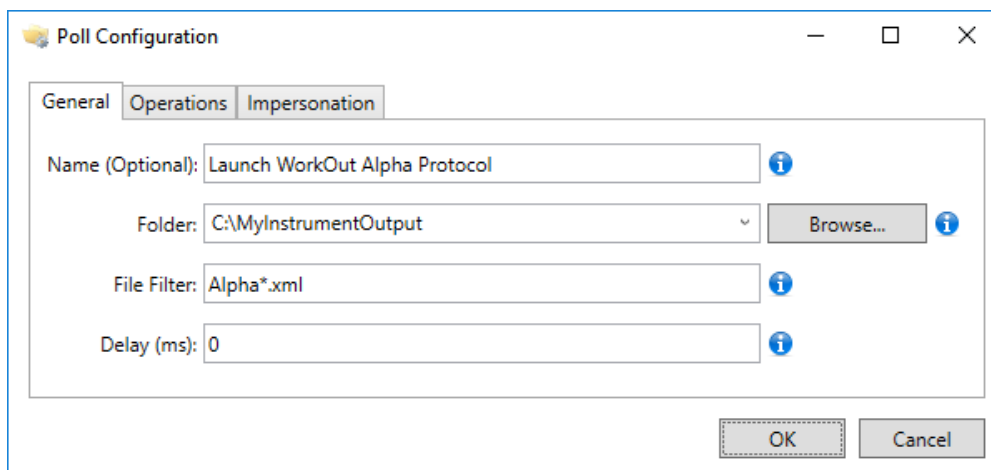
In the General tab, you configure a folder to monitor. This might be a folder to which another application outputs data files or the one to which you download the relevant files.

For the polled folder, you can specify the following settings:

- **Name** – Optionally provide name to display this poll with in a [Folder Poll List](#).
- **Folder** – Specify path to the folder to poll. Click **Browse** to select it.
- **Include Subfolders** – Select to monitor subfolders of the **Folder**.
- **File Filter** – Define the files to monitor. The asterisks (*) are wildcard characters that represent one or more other characters. For example, with *.txt, the Folder Poll with monitor all files with .txt extension.
- **Delay (ms)** – Specify a delay between the new file being detected and the operation being performed. This is useful to allow the application that created the file to complete its own operations before Folder Poll performs its own operations.

Example Configuration

In the following example, [Folder Poll service](#) will monitor the **C:\MyInstrumentOutput** folder for any new files with names that begin with "**Alpha**" and have an XML extension. (Example: "Alpha1.xml," "Alpha2.xml" will be processed.)



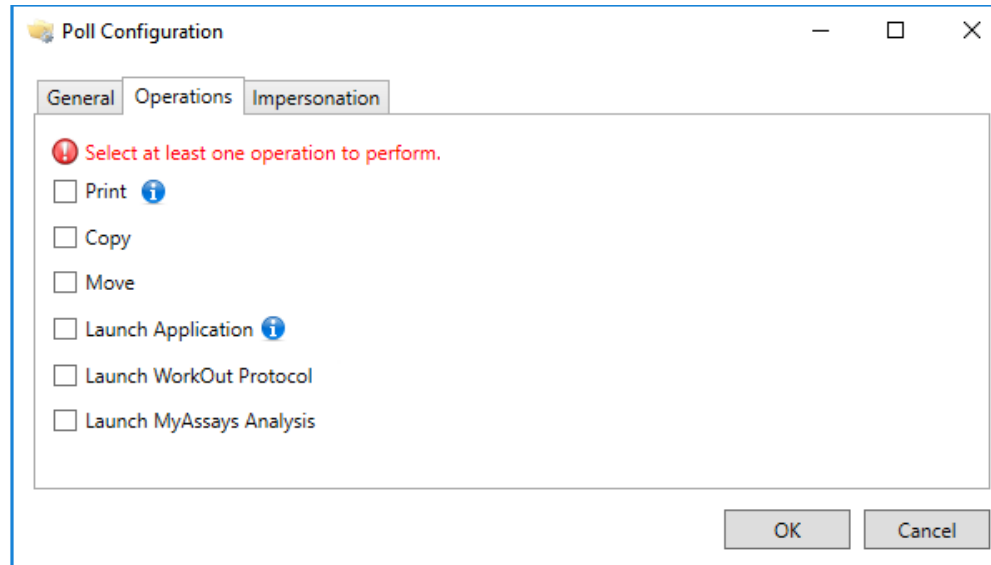
The screenshot shows a 'Poll Configuration' dialog box with three tabs: 'General', 'Operations', and 'Impersonation'. The 'General' tab is active. It contains the following fields:

- Name (Optional):** Launch WorkOut Alpha Protocol
- Folder:** C:\MyInstrumentOutput (with a 'Browse...' button)
- File Filter:** Alpha*.xml
- Delay (ms):** 0

At the bottom right, there are 'OK' and 'Cancel' buttons.

Operations Tab

The **Operations** tab is used for specifying one or more operations that **Folder Poll** will perform on the newly detected file.



Select one or more operations and specify the required inputs:

Print

Prints the new file with a default printer if it is available.

Copy

Creates a copy of a file in the defined **Target Folder**. To preserve subfolders of the original folder, select **Apply Subfolders**.

Move

Moves the file from the polled folder to the defined **Target Folder**. To preserve subfolders of the original folder, select **Apply Subfolders**.



If there is a read-only attribute set on the file, then it is removed before moving the file to the selected folder.

Target Folder for Copy and Move Operations

When you select to copy and/or move a file, specify a destination folder path for the operation. Click **Browse** to select a folder on your PC or a path to network location—or enter

or paste it from the clipboard. When working with network folders, start with double backslash \\, e.g., **\\mynetwork\folder**.



If you want to copy or move files from the polled folder to a protected or restricted location, use [Impersonation](#) to provide your credentials.

Launch Application

Open the file with optionally provided macros in the external application. For a complete description, see [Launching an Application](#) topic.

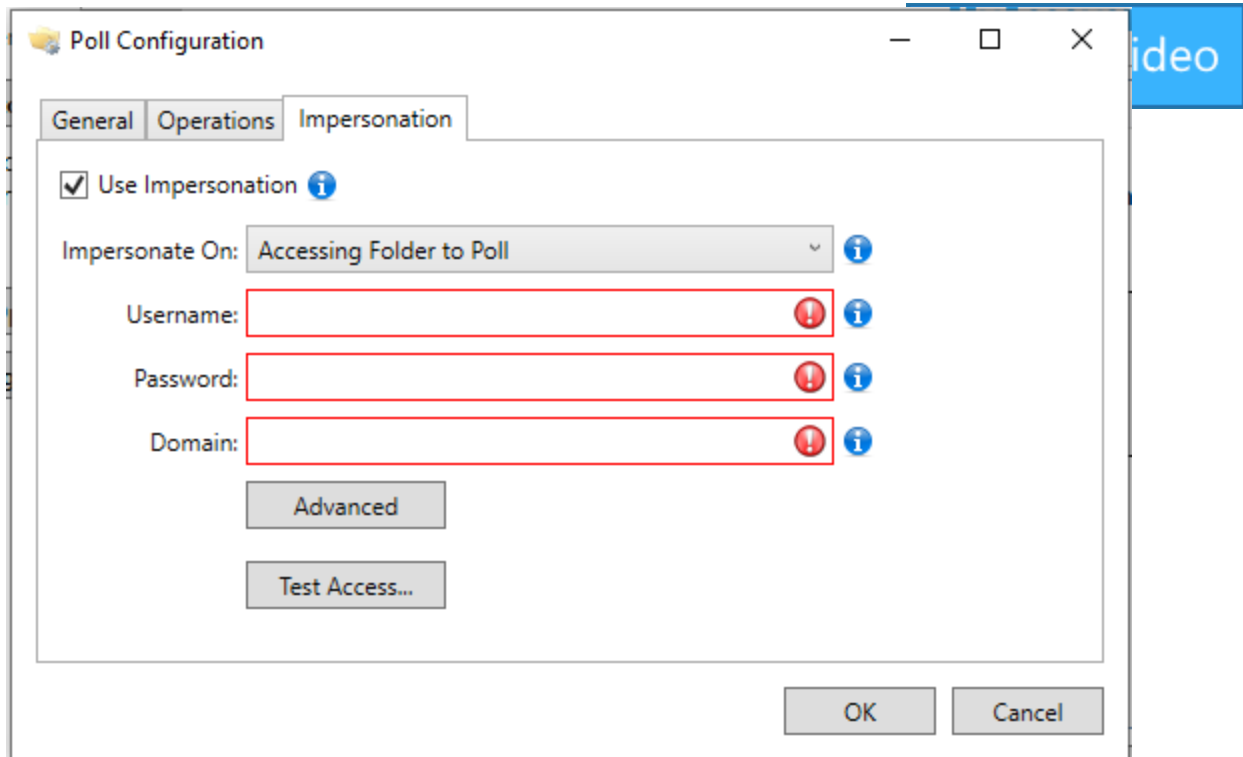
Launch WorkOut Protocol

Import the data from file in the specified WorkOut Plus protocol. For a complete description, see [Working with WorkOut Plus](#) topic.

Launch MyAssays Analysis

Import the data from file in the MyAssays Desktop protocol. For a complete description, see [Working with MyAssays Desktop Pro](#) topic.

Impersonation Tab

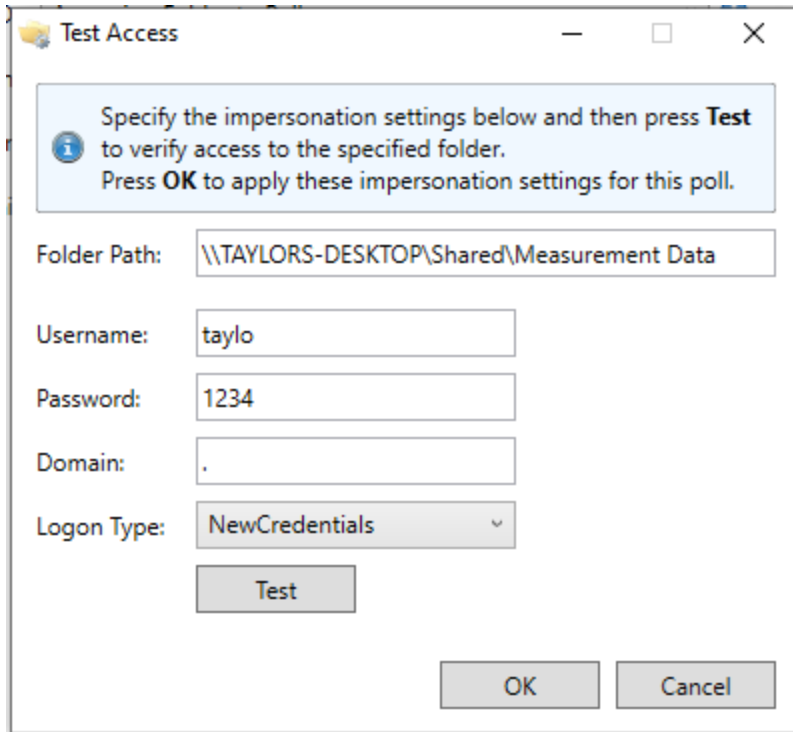


The **Impersonation** tab is used for specifying any authentication credentials that may be required to perform the selected operations. This is needed if the operations are on a resource that has restricted access such as a network folder.

For a description of the applicable settings, see [Impersonation](#).

By using the **Test Access** feature the impersonation configuration will be tested to ensure appropriate access is granted to the necessary resource.

To utilize this functionality, press **Test Access** and enter the **Username**, **Password**, **Domain**, and select the **Logon Type**.



Test Access

Specify the impersonation settings below and then press **Test** to verify access to the specified folder. Press **OK** to apply these impersonation settings for this poll.

Folder Path: \\TAYLORS-DESKTOP\Shared\Measurement Data

Username: taylo

Password: 1234

Domain: .

Logon Type: NewCredentials

Test

OK Cancel

Press **Test**, and the results of the test are displayed below the currently configured settings:

Test	Result
Valid credentials	✓
Accessible folder path	✓
Read access	✓
Write access	✓

Log

All operations performed by the [Folder Poll Service](#) can be logged. Use the **Log Settings** button to configure these options. Click the **Open Log** button to open the log.

The **Log** option enables the logging of all operations performed by the [Folder Poll service](#). The logged details are appended to a text file.

Log Configuration

The log is enabled by setting the **Log** attribute in the root element to true.

```
<FolderPoll Log="true">
```


You can specify the location of the log file (**LogFilePath**). If **LogFilePath** is not specified, then the default log location is used, which is a file named "Log.txt" in the same folder as the serviceConfig.xml configuration file.

A custom log file path can be specified (optional) using the **LogFilePath** attribute.

```
<FolderPoll Log="true" LogFilePath="c:\mylogfolder\log.txt">
```

If the log file or the folder where it should be created does not exist, then it is created the first time an entry is added to the log.

Logged Operations

Event	Log Entry Text	Arguments
When a new file is detected in a polled folder.	A new file {1} was detected in folder {0}.	{0} = the polled folder path. If a Name is specified for the poll, then the name is appended in brackets. {1} = Filename of file.
<p>The Copy or Move operation is performed.</p> <div style="border: 1px solid black; background-color: #fff9c4; padding: 10px; margin: 10px 0;">  <p>These items are added to the log when it is performed, so if there is a delay setting used, the operation is only logged when it is performed.</p> </div>	<p>The file was copied from {0} to {1}, or The file was moved from {0} to {1}.</p>	<p>{0} = full path to source file. {1} = full path to target filename (taking into account File Conflict settings, so if CreateWithNumberPrepend is set and the default file exists, then the actual target filename appears).</p>
The Launch Application operation was performed.	The application {0} was launched with arguments {1}.	{0} = the application is specified in the configuration. {1} = the arguments used to launch the application with.
A file conflict was detected, i.e., a file to copy or move already exists in the target folder.	The file at {0} already exists.	{0} = full path to target file.
How the file conflict was handled.	<p>The file at {0} was overwritten. The file was not moved/copied to {0}.</p> <p>The file was moved/copied to {0}.</p>	<p>{0} = full path to target filename (taking into account File Conflict settings, so if CreateWithNumberPrepend is set and the default file exists,</p>

Event	Log Entry Text	Arguments
		then the actual target filename appears.
When a security setting is applied to a moved/copied file.	The Security Setting ID {0} was applied to the file {1}.	When {0} is the Secure ID string from the XML attribute (e.g., "ReadOnly" and {1} is the target filename).
Any unhandled exceptions	Unhandled exception occurred {0} with stack trace {1}.	{0} = exception error message. {1} = stack trace.
Locked file retry attempts		
Miscellaneous errors	-	-

All entries in the log include a date and time stamp (using the system's default time settings) followed by a semicolon and then the log text.

14:10 25/6/2014; The file was copied from to c:\test\new.txt c:\target\new.txt.

Working with Folder Poll

In this section, you can find how to configure common operations and tasks with Folder Poll. This includes:

How to configure polling:

- [Network folders](#)
- [Protected Folders](#)

Also, here you can find out how to launch your detected files in:

- [External Application](#)
- [WorkOut Plus](#)
- [MyAssays Analysis](#)
- [MyAssays Desktop Pro with Kaleido](#)

Working with Network Folders

To poll for new content on network folders, Folder Poll offers the **Interval Polling** polling strategy. This method monitors folder at specified intervals (instead of immediate detection of new files as the Watcher method offers on local files).

Polling Network Folders

With Interval Polling, the Folder Poll service checks the contents of the polled folder for new files at default interval of 10 seconds. The period of time (in seconds) between polls can be changed in [XML](#) by adding the **Interval** attribute to the **Poll** element:

```
<Poll Folder="\\mynetwork\folder" Interval="60">
```

The Interval Polling automatically applies if the specified **Folder** is a network location and starts with `\\` (as in the example above). In this case:

- If the administrator account with which the service is running has access to the target network location(s), then no further configuration is required.
- If the network location requires single set of different credentials to access the network folder and/or perform configured actions, then specify the network authentication credentials in the [Impersonation](#) tab.
- If both the **Folder** to poll and the **Target Folder** for configured action (copy, move, or launch) require different authentication credentials, then configure [Advanced Impersonation](#) settings in the XML.

Interval Polling for Local Folders and Mapped Network Drives

Interval Polling can also be used on a local folder or mapped network drive by setting the **IntervalPolling** attribute and optionally configuring different interval.

```
<Poll Folder="c:\localfolder" IntervalPolling="true" Interval="30">
```


Working With Protected Folders

It is possible that the folder to poll might be a protected folder and may require [impersonation](#) to perform operations on the file in the protected folder.

Impersonation

Impersonation is required when the account, with which the folder poll service runs under, does not have access to the folder. When the file to process is on a restricted resource, you can use impersonation to provide the credentials necessary to access that resource.



For example, if a folder poll operation is configured to copy/move new files to a restricted location, it is necessary to provide the credentials to access that location. (The [Folder Poll Service](#) runs under a Windows local SYSTEM account that may not have access to your resources.)

Select the **Use Impersonation** check box and configure the impersonation as required in the [Impersonation tab](#) of the [Poll Configuration Window](#).

Impersonation Settings

The behavior of impersonation depends on the configuration of the settings described below.

Impersonate On

With **Impersonate On** setting, you determine the operations on which [Folder Poll Service](#) uses provided credentials to obtain access. Under **Impersonate On**, select an appropriate option:

- **Action (Copy | Move | Launch)** – Applies the impersonation settings for accessing a target location (e.g., protected folder on local machine or secured network location) of **Copy**, **Move**, and **Launch operations**. This is the default option.
- **Accessing Folder to Poll** – Applies the impersonation settings for accessing the folder to poll.
- **Action and Accessing Folder to Poll** – Applies the impersonation settings to access the folder to poll and perform configured operations on a target file.



If you use different impersonation credentials, then you can specify them in XML. To learn more, see the [Advanced Impersonation Configuration](#) topic.

Impersonation Credentials

Impersonation credentials are the account and domain settings that are required to access the associated protected resource (network or local). Enter or paste your **Username**, **Password**, and **Domain** associated with the resource.

Logon Type

Logon Type provides different impersonation logon options. For most cases, such as accessing network resources, **NewCredentials** should be used. However, other Logon Types are available for us in other impersonation scenarios. For a complete description of all Logon Types for impersonation, please see [https://msdn.microsoft.com/en-us/library/windows/desktop/aa378184\(v=vs.85\).aspx](https://msdn.microsoft.com/en-us/library/windows/desktop/aa378184(v=vs.85).aspx)

Locked Files

If a new file detected in a polled folder is locked (i.e., in use by another application), then the Folder Poll service will retry the operation at regular intervals. The Folder Poll service can only perform the operation when the new file is unlocked. All information relating to the attempts is stored in the Folder Poll log.


This scenario can be created by configuring a folder poll on a specified directory. Select to **Copy** the file to a specific folder. Next, open **Excel** and select to **Save** an Excel file into the polled folder. The file is detected by **Folder Poll**, but the file cannot be copied until **Excel** closes the file. The document won't be copied until after it is closed.

Launching an Application

Folder Poll can be used to launch a third-party application as soon as a new file is detected in a folder. This enables automatic processing of a file by another application.

In the **Operations** tab, select the **Launch Application** option and select the application to launch.

For example, the following configuration launches **Notepad** when a new file is detected:

Launch Application 


Application:

Arguments:

You can use the **Arguments** control to specify command-line parameters for the application. This accepts a number of macros that expand to filenames or file paths being processed by **Folder Poll**.

Launching an Application with Macros

Click **Manage** to insert macros into your string.

 Edit Application Arguments — □ ×

Please enter the application arguments as a plain string:

<SourceFilePath>

The following macros are supported (double-click to insert):

<SourceFilePath>	Full path of the processed file.
<SourceFileName>	File name and extension of the processed file, e.g., "file.txt".
<SourceFileNameNoExt>	File name of the processed file, e.g., "file".
<SourceFileNameNoExtNoQuotes>	Unquoted file name of the processed file, e.g., file.
<SourceFolder>	Folder of the processed file, e.g., "c:\MyFolder".
<SourceFolderNoQuotes>	Unquoted folder of the processed file, e.g., c:\MyFolder.
<CopiedFilePath>	Full path of the copied file (if the copy operation is performed).
<MovedFilePath>	Full path of the moved file (if the move operation is performed).

The arguments required will depend on the application to launch. You can provide your own additional parameters as part of the arguments in addition to the **Folder Poll** mac-

ros. For example, the following configuration is used to remove a new file's read-only attribute using the **attrib** command with the **-r** parameter.

Launch Application 

Application:

Arguments:

Working With WorkOut Plus

You can use **Folder Poll** alongside **WorkOut Plus** to allow WorkOut data analysis to be performed automatically when new measurement files are detected in a polled folder.

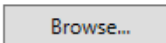

In this scenario, your instrument manager software will output measurement data files to a specific folder. Use WorkOut to create a protocol file to import and analyze the data from your instrument. Use **Folder Poll** to bring these elements together to monitor your instrument manager software output for new files and automatically launch a WorkOut protocol for analysis.

Configuring with WorkOut Plus

You can use Folder Poll to monitor a folder to which another application outputs data files.

If you use **WorkOut Plus**, then you will also have a **Launch WorkOut Protocol** option.

Launch WorkOut Protocol

Specified Protocol:  

Auto-Name Protocol:

Extract Protocol Name from File:

Select the **Launch WorkOut Protocol** option and click **Browse** to view the WorkOut protocols folder. Select the APR (assay protocol file) to launch. The selected APR file should be configured to import and process the new file appearing in the polled folder.

You can also configure WorkOut with [Advanced](#) options such as WorkOut-specific command line parameters.

Additionally, you can perform the **Copy** operation alongside **Launch WorkOut Protocol** to back up the measurement data to another location.



The **Move** operation is not available as part of the same poll since a file must be imported by WorkOut first and cannot not be moved. However, you can use the **Move** operation by setting up another folder poll with a **Delay**, such as 30 seconds, to allow WorkOut to process the data files first.

Working with MyAssays Desktop Pro



Overview

If you're collecting measurement data (e.g., from plate reader or other laboratory instrument) and working with MyAssays Desktop Pro, Folder Poll can streamline the integration between data collection and analysis by launching a MyAssays Desktop protocols as soon as new measurement data is collected. In this way, data analysis and report generation can be performed automatically each time measurements are completed. This means that you don't need to copy-and-paste or manually import your measurement data.

This topic describes how to configure Folder Poll to automatically launch a MyAssays Desktop protocol for analysis of data measured.

Configuration Workflow

The actual workflow will depend on how your reader outputs its data, however, the general process to configure MyAssays Desktop integration with Folder Poll is to:

1. Create measurements with your reader and export to a file in a specific folder.
2. Create or select a MyAssays Desktop protocol to perform the required analysis on this first file.
3. Create a folder poll to detect and handle new measurement files that match the first XML configured to launch a specific MyAssays Desktop protocol.



A folder poll can be created either using MyAssays Desktop or directly with Folder Poll Manager.

The folder poll can be created either using MyAssays Desktop or directly with Folder Poll Manager.

Folder Poll Creation with MyAssays Desktop

The easiest way to configure the Folder Poll integration is using MyAssays Desktop; MyAssays Desktop can automatically configure folder polls directly from your MyAssays Desktop protocol. For a video walk-through, please see:

- [Folder Poll with MyAssays Desktop](#) (8 min 4 sec)



It's useful to become familiar with [Folder Poll Manager](#) so that you can review and make any required changes to active folder polls.

Folder Poll Creation with Folder Poll Manager

For further flexibility folder polls can be created with [Folder Poll Manager](#) as follows:

1. Launch [Folder Poll Manager](#).
2. On the [Services](#) tab, click **Add**. This will launch the [Poll Configuration](#) window.
3. On the [General](#) tab, specify the path to the export folder and define the files to monitor with a file filter.
4. On the [Operations](#) tab, select **Launch MyAssays Analysis** check box.
5. Set up which MyAssays Desktop protocol to launch when the new measurements file is detected. Options include:
 - **Specified Protocol** – Browse and select an .assay-protocol file to launch
 - **Auto-Name Protocol** – The name of the protocol to launch is determined from the name of the newly detected file.
 - **Extract Protocol Name from File** – Provide an XPath expression to extract the protocol filename from the newly detected file.
6. (Optionally) click **Advanced** and provide [further configuration settings](#).

Auto-Name Protocol

Folder Poll can determine the name of the protocol to launch from the name of the newly detected file. This means that it is possible to create a general folder poll handler to launch multiple protocol files. This can be achieved by naming measurement data files to correspond to MyAssays Desktop/WorkOut protocol files.

For example, if a new measurement file is detected in a polled folder with the name "My Protocol.txt", then with the **Filename of new file** method selected:

- For WorkOut, "My Protocol.apr" protocol
- For MyAssays Desktop, "My Protocol.assay-protocol"

will be launched.

The folder to the protocols folder to use can be specified (this defaults to the default protocol folder for WorkOut or MyAssays Desktop).

There are different methods that Folder Poll can use to determine the protocol filename. The available auto-name methods and their behavior is described in the table below.

Method	Extraction Method	Example		
		New File-name	WorkOut Protocol to Launch	MyAssays Desktop Protocol to Launch
Filename of new file	The main filename of the file.	My Protocol.txt	<i>My Protocol.apr</i>	<i>My Protocol.assay-protocol</i>
Regular Expression	The regular expression is used to match the text to.	Filename.txt	With Regular Expression: ^... (Matches first 4 characters) <i>File.apr</i>	With Regular Expression: ^... (Matches first 4 characters) <i>File.assay-protocol</i>
Kaleido [ProtocolName]	Obtains the protocol name from the default Kaleido XML file format and extracts the text up to the first underscore (_).	Alpha_20150227_112122A.xml	<i>Alpha.apr</i>	<i>Alpha.assay-protocol</i>



If the determined protocol filename does not exist, then WorkOut or MyAssays Desktop is not launched. Full information about the name determination is included in the [Folder Poll log](#).

Advanced Options for Launching MyAssays Desktop or WorkOut Protocols

In the [Poll Configuration](#) window, on the [Operations](#) tab, when you select to launch MyAssays Desktop or WorkOut protocol files, Folder Poll can be configured with advanced options. These include:

Parameters (optional)

The MyAssays Desktop and WorkOut accept different parameters to initiate protocol execution and automate common tasks. In this field, you can optionally add the command line arguments to launch the application with.

For example, the following can be used for [WorkOut protocol](#) to import Sample IDs using a specific import script (MIS) from a specific Sample IDs file:

```
/IMPORT:sampleids "C:\Program
Files\Dazdaq\WorkOut 2.5\IScripts\T-
ableData\basic list.mis" "C:\Pro-
gramFiles\Dazdaq\WorkOut2.5\IScripts\Samples\Table
Data\rat ids.txt"
```

For MyAssays Desktop, the following configuration can be used to import Sample IDs, export the results to XLSX file without displaying MyAssays Analysis window.

```
/import-sampleids:"C:\User-
s\UserName\SampleID\DemoScanFile.csv" /calc
/export-report:xlsx:nolaunch /noappwin
```




To view all applicable command line arguments, refer to the **MyAssays Desktop User's Guide** or **WorkOut Help**.

Show WorkOut Protocol / MyAssays Desktop Window

Select this checkbox if you want to launch the application with the newly detected file.

If you prefer to hide the application window, then deselect this option. If you do this, then you will also need to specify a Windows username and password to run the application with. For example, when you select to not show WorkOut Protocol Window:

Show WorkOut Protocol Window

WorkOut Protocol Credentials 

Username: 

Password: 

Close WorkOut Protocol / MyAssays Desktop after Analysis

With this option, the application will have closed after the configured data analysis is completed.

Working with Kaleido and MyAssays Desktop Pro

Overview

If you're working with Kaleido 2.0/3.0/4.0 and MyAssays Desktop Pro, Folder Poll can streamline the integration between the two applications by launching data analysis protocols as soon as new measurement data is collected. In this way, data analysis and report generation can be performed automatically each time measurements are completed. This means that you don't need to copy-and-paste or manually import your measurement data.

This topic describes how to configure Folder Poll to automatically launch a MyAssays Desktop protocol for analysis of data measured with the Kaleido software.

Default Configuration

A default Folder Poll configuration is applied if MyAssays Desktop and Kaleido are installed; this serves as an example integration to help you get started. You can also set up your own custom configurations for launching MyAssays Desktop protocols as required.



If both MyAssays Desktop and WorkOut are installed, the configuration for MyAssays Desktop takes precedence over WorkOut configuration.

If Kaleido is installed, the first time Folder Poll Manager is launched (without any existing configuration in place), a prompt for applying the default Kaleido configuration will appear. Click **Yes** to apply the default configuration, this:

- Polls Kaleido's **Screening** folder for **Alpha 384-well Screening*.xml** files
- Polls Kaleido's (v2.0 and v3.0) **Assay development** folder for **Cell Confluency Assay Development*.xml** files
- Polls Kaleido's (v4.0) **Assay development** folder for **LANCE-cAMP 384 well Lamp*.xml** files
- Launches MyAssays Analysis (with an associated protocol) for each new matching file detected in the polled folders

Custom Configuration

Beyond the default configuration, use MyAssays Desktop or [Folder Poll Manager](#) to configure the automatic execution of operations as soon as Kaleido measurements are completed.

Configuration Workflow



Because both Kaleido and MyAssays Desktop use the term “protocol”, for clarity, here a Kaleido protocol is referred to as the *Kaleido measurements protocol* and a MyAssays Desktop protocol as the *MyAssays Desktop protocol*.

The general workflow to configure the Kaleido/MyAssays Desktop integration is to:

1. Create a Kaleido measurements protocol that performs the measurements and exports the data to an XML file.
2. Run this Kaleido measurements protocol at least once to generate a first measurement XML file.
3. Create or select a MyAssays Desktop protocol to perform the required analysis on the first XML file.
4. Create a folder poll to detect and handle new measurement files that match the first XML configured to launch a specific MyAssays Desktop protocol.



A folder poll can be created either using MyAssays Desktop or directly with Folder Poll Manager.

Further Kaleido files created by the Kaleido measurements protocol will then be automatically processed by MyAssays Desktop under the control of the folder poll service.

Folder Poll Creation with MyAssays Desktop

The easiest way to configure the Folder Poll integration is using MyAssays Desktop; MyAssays Desktop can automatically configure folder polls directly from your MyAssays Desktop protocol. For video walk-throughs, please see:

- [https://www.myassays.com/folder-poll-with-myassays-desktop-pro-and-kaleido-2-0-\(1-of-2\).video](https://www.myassays.com/folder-poll-with-myassays-desktop-pro-and-kaleido-2-0-(1-of-2).video) (8 min 8 sec)
- [https://www.myassays.com/folder-poll-with-myassays-desktop-pro-and-kaleido-2-0-\(2-of-2\).video](https://www.myassays.com/folder-poll-with-myassays-desktop-pro-and-kaleido-2-0-(2-of-2).video) (6 min 27 sec)



It's useful to become familiar with [Folder Poll Manager](#) so that you can review and make any required changes to active folder polls.

Folder Poll Creation with Folder Poll Manager

For further flexibility folder polls can be created with [Folder Poll Manager](#) as follows:

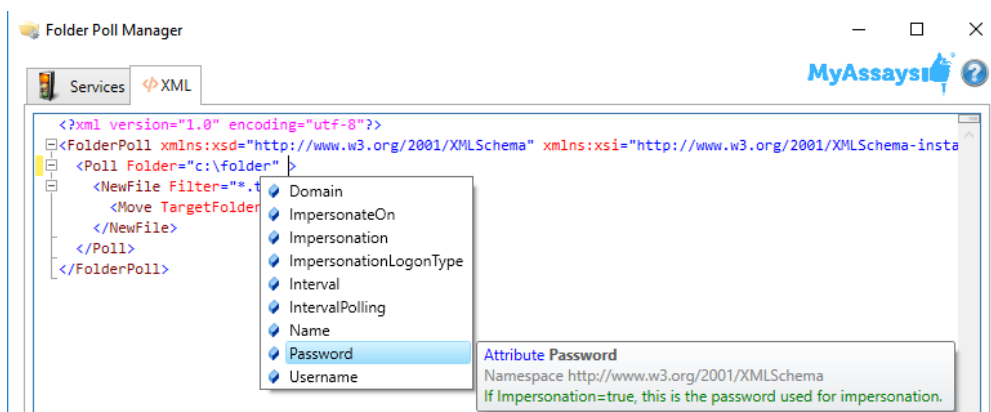
1. Launch [Folder Poll Manager](#).
2. On the [Services](#) tab, click **Add**. This will launch the [Poll Configuration](#) window.
3. On the [General](#) tab, specify the path to the Kaleido export folder and define the files to monitor with a file filter.
4. On the [Operations](#) tab, select **Launch MyAssays Analysis** check box.
5. Set up which MyAssays Desktop protocol to launch when the new measurements file is detected. Options include:
 - **Specified Protocol** – Browse and select an .assay-protocol file to launch.
 - **[Auto-Name Protocol](#)** – The name of the protocol to launch is determined from the name of the newly detected file.
 - **Extract Protocol Name from File** – Provide an XPath expression to extract the protocol filename from the newly detected file.
6. (Optionally) click **Advanced** and provide [further configuration settings](#).

XML

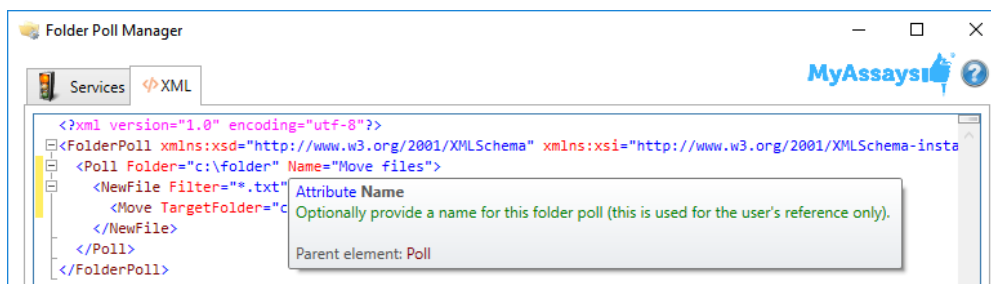
The **XML** tab provides an advanced XML editor with convenient features such as auto-complete and inline help.

To enable auto-complete, simply start typing XML code. For example, to see what attributes are available for a specific XML element, position the cursor inside the element and press the spacebar.

In this example, the cursor is positioned inside the Poll element. Pressing the spacebar displays the available settings for the **Poll** element. Also, selecting an option displays further information about the element.



Inline help is also available by hovering over an XML attribute. For example, here is the inline help for the **Name** setting.



The XML editor also validates the XML code as the user types. Invalid entries are underlined in red. For example, here the **Domain** attribute has been spelled incorrectly, so it is underlined with a red squiggly line:



Certain functions can only be configured via XML.

For further information about defining poll in the XML, see [Advanced Configuration](#).

Encrypt Configuration

For users with Folder Poll Enhanced Security the **Encrypt Configuration** feature will encrypt the Folder Poll configuration. This is useful if the configuration contains sensitive information such as credentials.

To enable Encrypt Configuration, open the Folder Poll Manager and within the XML editor select the **Encrypt Configuration** checkbox.

Services XML

```
<?xml version="1.0" encoding="utf-8"?>  
<FolderPoll xmlns:xsd="http://www.w3.org/2001/XMLSchema" xmlns:xsi="http://www.w3.org/2001/X  
<Poll IsEnable="false" Folder="C:\Users\taylo\OneDrive\Documents\MyAssays\Measurements\FP  
  <NewFile Filter="*.xlsx">  
    <LaunchMyAssaysAnalysis MAnalysis="C:\Program Files (x86)\MyAssays\MyAssays Desktop\My.  
  </NewFile>  
</Poll>  
<Poll Folder="\\TAYLORS-DESKTOP\Shared\Measurement Data" Name="MyAssays Desktop Measuremen  
  <NewFile Filter="*.txt">  
    <LaunchMyAssaysAnalysis MAnalysis="C:\Program Files (x86)\MyAssays\MyAssays Desktop\My.  
  </NewFile>  
</Poll>  
</FolderPoll>
```

Encrypt Configuration Apply

Advanced Configuration

Additional advanced configurations are available, but they require XML to configure. This includes:

- [Advanced Impersonation Settings](#) – Assessing multiple protected or network locations.
- [Security Functions](#) – Setting security options for processed files (such as marking as read-only to specific users)
- [File Conflict](#) – Dealing with filename conflicts
- [Hidden Files](#) – Dealing with hidden files
- [Polling Renamed Files](#) – Monitoring files that are downloaded from internet to a temporary location and renamed after the download is complete
- [Preserve Settings on Move](#) – Setting the **Modified** date/time stamp and **Owner** for the files that are moved
- [Snippet](#) – Enabling automatic configuration of Folder Poll from other applications
- [Command Line](#) – Running and configuring Folder Poll using command line parameters
- [Changing Folder Poll Configuration Programmatically](#) – Changing the polling behavior from an external application or tool

You can read more about these configurations in the following subsections.

Advanced Impersonation Settings

Impersonation configuration via XML enables further flexibility in configuring the [Folder Poll Service](#); this is useful when accessing multiple resources that are protected in different ways. For example, the impersonation credentials used for the **Copy** operation can be different to those used to access the folder to poll.

XML Configuration on Poll Level

The top-level impersonation settings are specified under the **Poll** element (and match those defined in the [Impersonation](#) tab of the [Poll Configuration Window](#)). For example,

```
<Poll Folder="C:\foldertopoll" Username="User1" Password="password1"
Domain="." Impersonation="true" ImpersonateOn="All" ImpersonationLogonType="Interactive">
```

Any setting specified in this way will also be applied to any child actions. Thus, the impersonation credentials specified here will also apply to any **Copy**, **Move**, and **Launch** actions that are performed when a new file is detected in this polled folder.

XML Configuration on Action Level

The impersonation settings specified at the Poll level can be overridden by each action.

Inside an **Action** element, set **Impersonation** to **"true"** and optionally provide the **Username**, **Password**, **Domain**, and **ImpersonateLogonType** attributes. The settings provided here will replace the settings defined at the **Poll** level.



If any of the impersonation settings are not defined in **Action** element, then the **Poll** level settings are inherited and applied to the action.

For example, the following configuration will move any new .TXT file in the restricted location to the target folder and then launch them in the specified application:

```
<Poll Folder="C:\foldertopoll" Username="User1" Password="password1"
Domain="." Impersonation="true" ImpersonateOn="All" ImpersonationLogonType="Interactive">
  <NewFile Filter="*.TXT" Delay="1000">
    <Move TargetFolder="C:\protected"
Impersonation="true" Username="User2"
Password="password2"/>
```

```
<Launch Application="Full file path"/>  
</NewFile>  
</Poll>
```

Here one set of credentials (**User1** and **password1**) is used for accessing the polled folder (**C:\foldertopoll**) and launching the application; the other set of credentials (**User2** and **password2**) is used to move the files to the specified folder (**C:\protected**). For both sets of account credentials the same domain is used.

Command Line Parameters

You can automatically run Folder Poll using the command line. These 4 options are executed in the same order as below:

/ stop – Attempts to stop the polling service if it is currently running. If it is unable to do so, an error message is displayed and no further actions are performed.

/ add:file _ p a t h – Updates current polling configuration. If it is unable to do so, an error message is displayed and the application is closed.

The most common use of this is using a [snippet](#).

/ start – Starts the polling service with the current configuration if it is not currently running. If it is unable to start the service, an error message is displayed.

/ noappwin – If you use this option, Folder Poll Manager application is not displayed.

Changing Folder Poll Configuration Programmatically

You can update the folder polling behavior in an external application or use editing tool to modify it directly.

The complete configuration of the Folder Poll system is defined in **serviceConfig.xml**. It is located in the Folder Poll installation folder, which is typically C:\Program Files\MyAssaysi\Folder Poll.



When modifying the **serviceConfig.xml** directly, make sure that the modification is valid. With this approach, the XML would not be validated, so any errors in it might prevent the service from successfully restarting.

The changes to the **serviceConfig.xml** are applied when the [folder poll service](#) is restarted and should not affect the running service. If using the Folder Poll Manager, this is when you click **Apply**.

To apply programmatic changes:

1. In the elevated (with administrative rights) command line, enter or paste **net stop FolderPollService** to stop [folder poll service](#).
2. Update the **serviceConfig.xml** file.
3. In the elevated command line, enter or paste **net start FolderPollService** to start service again.



When starting or stopping this way, the Folder Poll Manager window will not reflect the current status correctly.

File Conflict

For **Copy** and **Move** operations, if there is already a file in the target folder that matches the name of the filename to be used, then the software can be configured to specify how this file conflict is handled.

There are 3 options:

- **Skip** – The operation will not be performed and the file with the same name is preserved.
- **Overwrite** – The operation is performed and the file with the same name is overwritten.
- **CreateWithNumberPrepend** – The operation is performed, but a unique sequential number is appended to the filename. For example, if file "0001.csv" already exists, then the resulting file is "0001 (1).csv".

These settings can be set up with the **FileConflict** attribute of the **Copy** and **Move** elements. For example, the following will not copy the TXT file if there is already a file with the same name in the target folder.

```
<FolderPoll>
  <Poll Folder="c:\foldertopoll">
    <NewFile Filter="*.txt" Delay="1000">
      <Copy TargetFolder="c:\destination" FileConflict="Skip"/>
    </NewFile>
  </Poll>
</FolderPoll>
```

If the **FileConflict** attribute is not specified, then **CreateWithNumberPrepend** is used.

If the [Log](#) is in use, then all operations are logged. The log includes an entry to describe that a file conflict was detected and the specified action was performed. Note that the **Overwrite** operation will set the read-only property of the file to overwrite before overwriting. The overwrite operation may fail if the account running the folder poll service does not have permission to overwrite. In this case, the information is added to the log (if it is in use).

Hidden Files

New hidden files detected in a polled folder are not processed by default because hidden files are usually system files or temporary files. If you need to handle hidden files, then set the **IncludeHidden** attribute in the **NewFile** element.

```
<NewFile Filter="*.*" IncludeHidden="true">
```

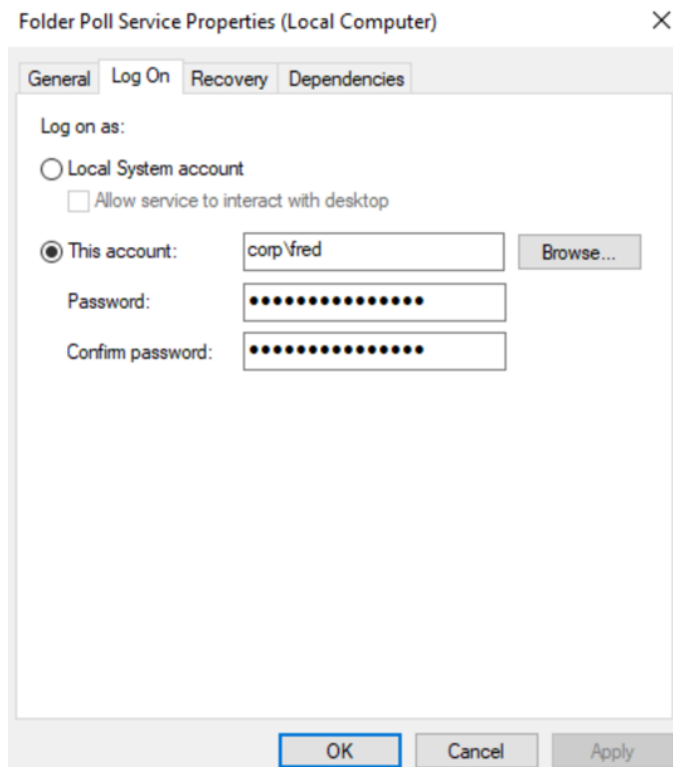
Launching Folder Poll Service With a Different Account

The default Folder Poll configuration runs the Folder Poll service under the Windows System account; this means that the service can access resources available to the system account. Where Folder Poll requires access to resources not available to the System account, the Folder Poll service can be configured to run under a different account that does have access. For example, if Folder Poll is required to access resources that are only available to a domain account then the Folder Poll service can be configured to run under an appropriate domain account.

To change which account the Folder Poll Service runs under:

1. Launch **services.msc**
2. Stop **Folder Poll service** (it is necessary to stop the Folder Poll service before making this change)

3. Edit **Folder Poll** service properties to specify the account and password to use, e.g.



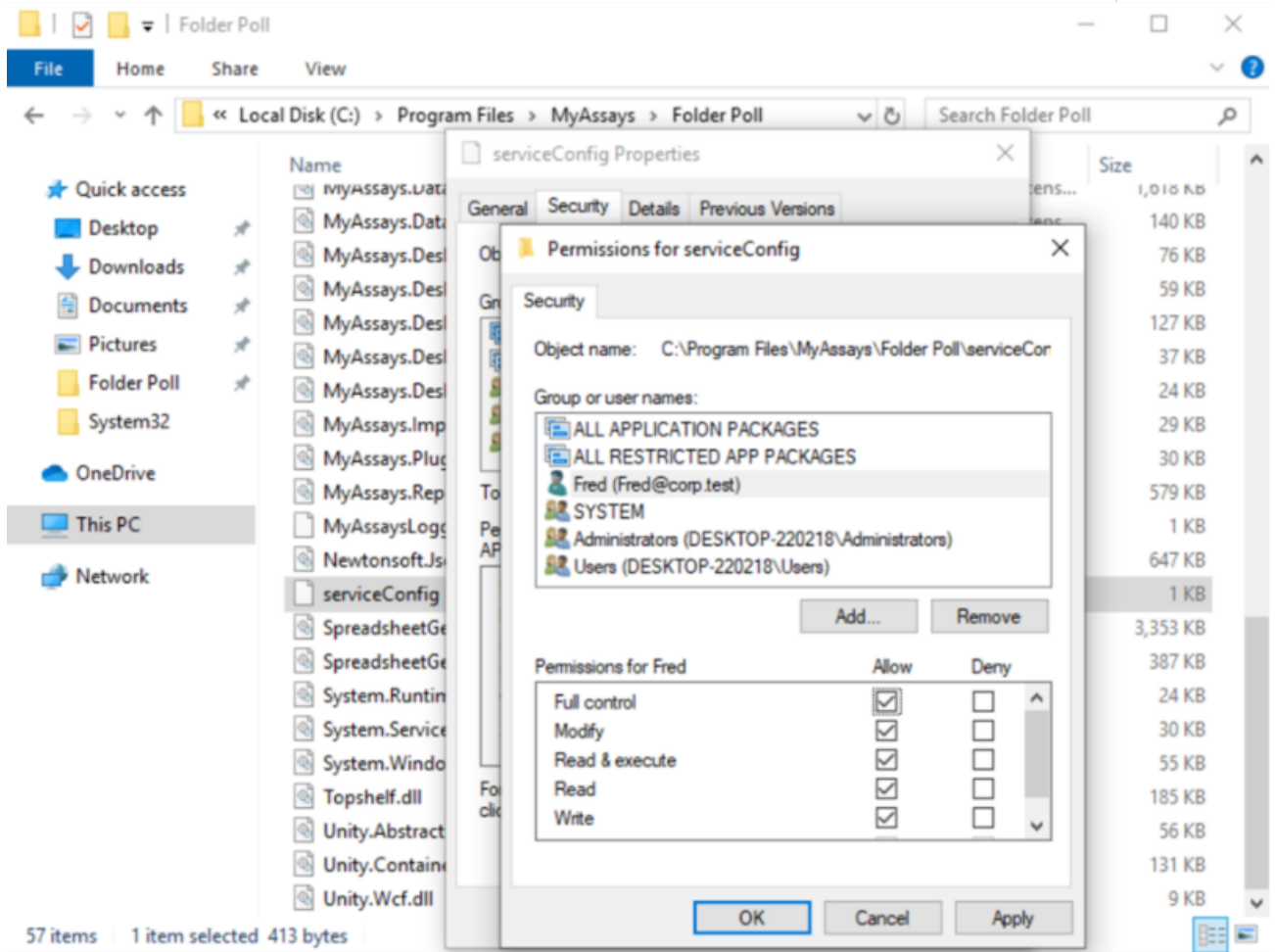
Before proceeding it is necessary to grant the same account access to necessary Folder Poll resources which might otherwise be blocked, this includes files and registry key:

C:\Program Files\MyAssays\Folder Poll\serviceConfig.xml

C:\Program Files\MyAssays\Folder Poll\Log.txt

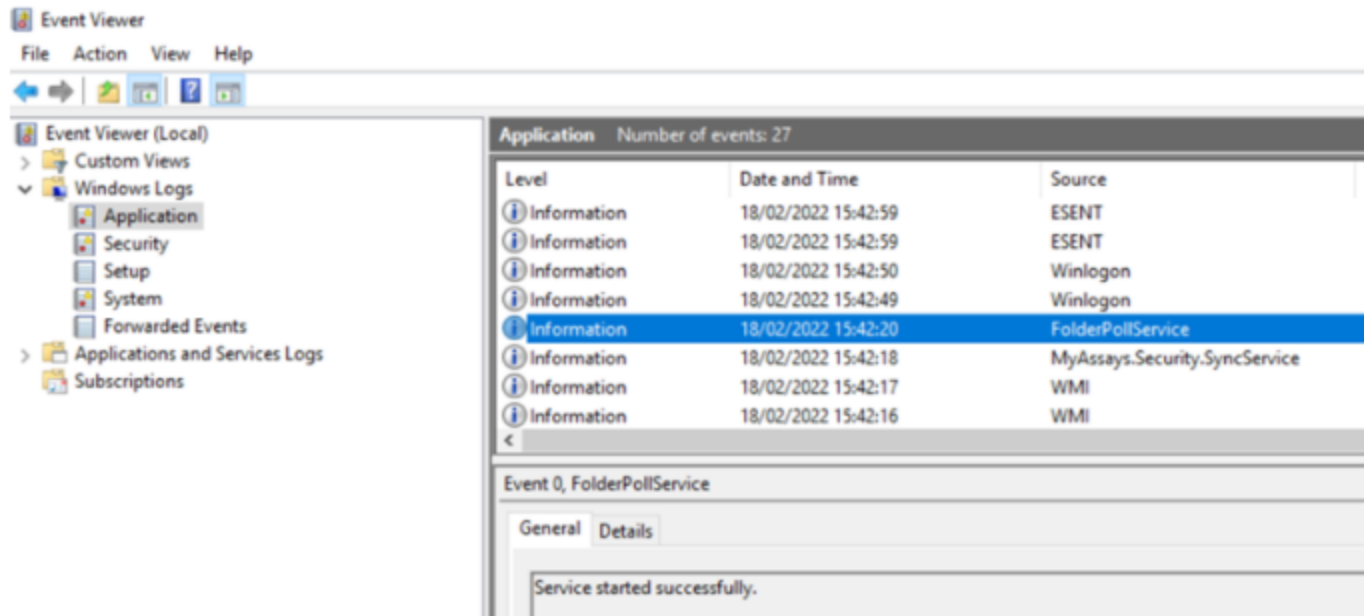
HKEY_LOCAL_MACHINE\Software\MyAssays\Folder Poll

Please ensure the specified account has full permissions on these resources, e.g.



4. Restart the system after granting these permissions

5. After restarting the PC, check **eventvwr** to verify that the Folder Poll service has started successfully



Polling Sub folders

By default, Folder Poll will only check for new files in the specified folder to poll. However, when monitoring local folders, Folder Poll can detect and process new files that are created in any subfolder (along with new files in the primary folder). This includes new subfolders that are created after the [folder poll service](#) started and nested subfolders.

To turn on polling subfolders, when adding new or editing existing [poll](#), in the [Poll Configuration](#) window, on the [General](#) tab, select the **Include Subfolders** check box.

Enable polling of sub folders in XML

1. Launch [Folder Poll Manager](#).
2. Open the [XML](#) tab.
3. Locate **Poll** element with the folder that contains subfolders to monitor.
4. Add the **IncludeSubdirectories** attribute and set it to true.

```
<Poll Folder="C:\foldertopoll" IncludeSubdirectories="true">
```



If the folder is monitored using [Interval Polling](#), then this feature is not available.

Polling Renamed Files

Certain applications and scenarios create new files by first creating a temporary file and then renaming the completed file to a new target filename only on completion of an operation.

For example, when a web browser downloads a file, it might download the file to a temporary file in the Downloads folder but only rename it to its final target filename on completion. Other applications such as data acquisition tools might work in a similar way.

Folder Poll supports polling for files created like that and will treat them as new files to be processed. In this way, Folder Poll can integrate with applications that build content from temporary files. For example, the system can be configured to copy all downloaded files to a back-up location.

Polling of renamed temporary files works as follows:

- If the original filename does not match the specified **File Filter**, the renamed file is treated as new file and detected automatically.
- If a renamed file already matches the file filter (e.g., "test.xlsx" to "test2.xlsx"), then the rename would not trigger a **NewFile** action.



If the folder is monitored using [Interval Polling](#), then this feature is not available.

Disabling Renamed Files Polling

To disable this feature, in the [XML](#), under **NewFile** operation, add the **IncludeRename** Boolean argument and set it to false.

XML Example

```
<FolderPoll>
  <Poll Folder="c:\foldertopoll">
    <NewFile Filter="*.txt" Delay="1000" IncludeRename="false">
      <Move TargetFolder="c:\destination"/>
    </NewFile>
  </Poll>
</FolderPoll>
```

Preserve Settings for Move Operation

When you select to **M o v e** newly detected files to the specified destination, the state properties of the file are preserved as follows:

- **Preserve Modified** – The moved file's Modified date/time stamp (as it appears in Windows Explorer | file Properties) is the same as before the file was moved.
- **Preserve Owner** – The Owner setting of a file is not changed after the move operation. (The Owner setting can be found in Windows Explorer | file Properties | Details tab.)

Disabling Preserve Settings

To disable this feature, in the XML tab, add **PreserveModified** and/or **PreserveOwner** Boolean attributes to the **Move** element and set them to **false**.



If Log is enabled, then these operations are added to the log.

XML Example

```
<FolderPoll>
  <Poll Folder="c:\foldertopoll">
    <NewFile Filter="*.txt" Delay="1000">
      <Move TargetFolder="c:\destination" PreserveModified="false"
        PreserveOwner="false"/>
    </NewFile>
  </Poll>
</FolderPoll>
```


Security Functions

When a **Copy** or **Move** operation is performed, the security settings of the target file (the copied or moved file) can optionally be configured and set by the service. You can do this by referring to security settings to apply to the target file.

For example, with the following setting, the **ReadOnly** settings are applied to the copied file.

```
<Copy TargetFolder="c:\destination" Secure="ReadOnly"/>
```

The security settings are defined in an optional **Security** element of the XML.

```
<Security>  
<Setting ID="ReadOnly">  
<FileSystemAccess Right="Write" Permission="Deny" Identity="Fred" />  
<FileSystemAccess Right="Read" Permission="Allow" Identity="Fred" />  
</Setting>  
<Setting ID="NoDelete">  
<FileSystemAccess Right="Delete" Permission="Deny" Identity="Anyone" />  
</Setting>  
</Security>
```

In this example, two settings are defined: **ReadOnly** and **NoDelete**.

If the **Security** attribute is not set, then no security settings are applied.

```
<Copy TargetFolder="c:\destination" />
```

Snippet

You can automatically configure Folder Poll from other applications using a snippet. For example, the MyAssays Desktop application can configure Folder Poll by adding a new folder poll operation.

What Is a Snippet?

A snippet file is an XML file that has same structure as Folder Poll configuration file. It has at least one poll (Root Node is **FolderPoll**) with one or more **Poll** elements.

Example - How to Use a Snippet?

The following snippet file contains the settings to add a folder poll to launch Notepad when a new file is detected in the specified folder:

```
<? xml version="1.0" encoding="utf-8"? >
<FolderPoll xmlns:xsi="http://www.w3.org/2001/XMLSchema-instance"
xmlns:xsd="http://www.w3.org/2001/XMLSchema">
<Poll Folder="C:\Users\U serN ame\Documents" Name="Launching note-
pad">
<NewFile Filter="*.*)" Delay="0">
<Launch Application="C:\Windows\notepad.exe"
Arguments="& It;SourceFilePath& gt;" />
</NewFile>
</Poll>
</FolderPoll>
```

Save this snippet is saved to a file at: **C:\Users\U s e r N a m e \Desktop\snippet example.txt**

Add the snippet to Folder Poll by launching the command: **C:\Program Files\MyAs- says\Folder Poll\FolderPoll.Manager.exe / add:" C:\Users\U s e r N a m e \Desktop\snippet example.txt"**

This will add the snippet and display the Folder Poll Manager.

If you do not want to display the Folder Poll Manager, use this command: **C:\Program Files\MyAssays\Folder Poll\FolderPoll.Manager.exe / add:" C:\Users\U s e r - N a m e \Desktop\snippet example.txt" / noappwin**

Automate Snippets with MyAssays Desktop

MyAssays Desktop automates the above process of adding a snippet by:

- a. Automatically creating the snippet file using Analysis and
- b. Adding it to the FolderPoll configuration at the end of the Import Wizard process.

T radem ark s

The MyAssays name and logo are registered trademark of MyAssays Ltd.

Windows, Windows 7, .NET, and Excel are registered trademarks of Microsoft Corp. in the United States and other countries.

WorkOut is a trademark of PerkinElmer.

Additional Software License Notices

Folder Poll utilizes the **Newtonsoft.Json** library. In accordance with the MIT license, the following notice is included here in relation to the **Newtonsoft.Json** component:

The MIT License (MIT)

Copyright (c) 2007 James Newton-King

Permission is hereby granted, free of charge, to any person obtaining a copy of this software and associated documentation files (the "Software"), to deal in the Software without restriction, including without limitation the rights to use, copy, modify, merge, publish, distribute, sublicense, and/or sell copies of the Software, and to permit persons to whom the Software is furnished to do so, subject to the following conditions:

The above copyright notice and this permission notice shall be included in all copies or substantial portions of the Software.

THE SOFTWARE IS PROVIDED "AS IS," WITHOUT WARRANTY OF ANY KIND, EXPRESS OR IMPLIED, INCLUDING BUT NOT LIMITED TO THE WARRANTIES OF MERCHANTABILITY, FITNESS FOR A PARTICULAR PURPOSE AND NON-INFRINGEMENT. IN NO EVENT SHALL THE AUTHORS OR COPYRIGHT HOLDERS BE LIABLE FOR ANY CLAIM, DAMAGES OR OTHER LIABILITY, WHETHER IN AN ACTION OF CONTRACT, TORT OR OTHERWISE, ARISING FROM, OUT OF OR IN CONNECTION WITH THE SOFTWARE OR THE USE OR OTHER DEALINGS IN THE SOFTWARE.

Folder Poll utilizes the **Log4net** library. In accordance with the Apache license, the following notice is included here in relation to the **Log4net** component:

The Apache License

Copyright © 2012 The Apache Software Foundation

Licensed under the Apache License, Version 2.0 (the "License"); you may not use this file except in compliance with the License. You may obtain a copy of the License at

<http://www.apache.org/licenses/LICENSE-2.0>

Unless required by applicable law or agreed to in writing, software distributed under the License is distributed on an "AS IS" BASIS, WITHOUT WARRANTIES OR CONDITIONS OF ANY KIND, either express or implied. See the License for the specific language governing permissions and limitations under the License.

Folder Poll utilizes the **Topshelf 3.3.1** library. In accordance with the Apache license, the following notice is included here in relation to the **Topshelf 3.3.1** component:

The Apache License

Copyright © 2018 The Apache Software Foundation

Licensed under the Apache License, Version 2.0 (the "License"); you may not use this file except in compliance with the License. You may obtain a copy of the License at

<http://www.apache.org/licenses/LICENSE-2.0>

Unless required by applicable law or agreed to in writing, software distributed under the License is distributed on an "AS IS" BASIS, WITHOUT WARRANTIES OR CONDITIONS OF ANY KIND, either express or implied. See the License for the specific language governing permissions and limitations under the License.

Online Resources

Further resources including video tutorials and updates are available online at www.my-assays.com/folder-poll.

T e c h n i c a l S u p p o r t

For any technical support questions, please email us at: support@myassays.com.

Index

A

- Activating License 14
- Additional Software License Notices 69
- Advanced Options for Launching MyAssays Desktop or WorkOut Protocols 44
- Advanced Configuration 50, 52
- Advanced Impersonation Settings 53
- Auto-Name Protocol 42
- Automate Snippets with MyAssays Desktop 67

C

- Command Line Parameters 55

D

- Delay (ms) 23

F

- File Conflict 57
- File Filter 23
- Folder Poll 1, 5-7, 9-10, 12-14, 16-18, 20-21, 23-24, 28, 31-32, 34, 36-37, 39-40, 42, 44, 46, 50, 52-53, 55-56, 58, 62-63, 66, 69
- Folder Poll Configuration 7
- Folder Poll Manager 7
- Folder Poll Overview 5
- Folder Poll Service 7

G

- General Poll Configuration 23

H

- Hidden Files 58

How to use a snippet? 66

I

Impersonate On 34

Impersonation 8, 22, 25-26, 32, 34, 52-53

Impersonation Credentials 34

Impersonation Settings 34

Installer 10

Installing Folder Poll 10

Interval Polling for Local Folders 32

K

Key Components 6

L

Launching an Application 37

Launching an Application with Macros 37

Licensing 14

Licensing Details 15

List of Configured Polls 18

Locked Files 36

Log 5, 17, 21, 28, 57, 59, 64

Log Configuration 28

Log Settings 21

Logged Operations 29

Logon Type 26, 35

M

mpersonation Tab 26

O

Online Resources 71

Operations Tab 24

P

Poll Configuration 6-7, 16, 18, 22, 34, 41, 44, 48, 52-53, 56, 62

Poll Configuration Window 22

Polled Folder Configuration 23

Polling Network Folders 32

Polling Renamed Files 63

Polling Subfolders 62

Preserve Settings for Move Operation 64

Product Versions 8

Protected Folders 31, 33

S

Security Functions 65

Services 17

Snippet 66

Start 10, 13, 17, 20

Start and Stop 20

Stop 17, 20, 58

System Requirements 9

T

Technical Support 72

U

Uninstall 12

Uninstalling Folder Poll 12

W

Working with Kaleido and MyAssays Desktop Pro 46

Working with MyAssays Desktop Pro 40

Working with Network Folders 32

Working With WorkOut Plus 39

WorkOut Plus 5, 16, 25, 31, 39

X

XML 5-8, 23, 30, 32, 34, 40, 42, 47, 49-50, 52-53, 56, 62-66